



Sudbury Bruce Freeman Rail Trail Advisory Task Force Meeting *October 14, 2021*



Agenda

- 1) Call Meeting to Order by Roll Call
- 2) Project Design Update
 - 75% Plan MassDOT Comment Resolution Process
 - Project Schedule and Communications
- 3) Design Review Considerations (may include, but is not limited to)
 - Roadway Crossings, RRFB Evaluation and safety concerns, and changes to splitter island design
 - Discussion of railings and fencing
 - Bridge details – railings at both bridges, façade at Pantry Brook
 - Landscaping updates (general)
 - Other accessories and amenities
- 4) Public Comments
- 5) Approval of Meeting Minutes
- 6) Administrative Report

Upcoming Meeting – Thursday, November
4, 2021

Information on the BFRT Project Design may
be found at

<https://sudbury.ma.us/pcd/?p=354>

Agenda

2) Project Design Update

- 75% Plan MassDOT Comment Resolution Process
- Project Schedule and Communications



75% Plan MassDOT Comment Resolution Summary

- Participating items questions (Different PM and Different District from Concord)
 - Connector paths
 - Parking lot
 - Bathroom
 - Pavilion
 - Hydration stations
 - Kiosk, interpretive and other signs
 - BFRT granite piers, granite historic markers, mile markers
- Roadway Crossings
 - Justify HAWK and RRFBs
 - Minor changes to splitter island design
- Landscaping comments
- Stockade Fencing for safety only
- Hop Brook Structural Question – Backwall Retention

Resolution of some questions is ongoing, but we have advanced to the 100% Design Phase and do not expect schedule impacts.

Project Schedule

- Project remains on schedule for 6/25/2022 Advertisement
- 100% Submission – Mid January 2022
- Environmental Permits
 - Chapter 91 complete – Jurisdictional, but exempt from permitting as a minor modification
 - Draft permits reviewed by MassDOT and F&O preparing final versions
 - MEPA ENF – Submitting to DOT end of October, DOT to file in Nov.
 - NOI – Revised Final Draft to DOT early Nov, DOT to file end of Nov.
 - Army Corps Pre Construction Notification (no Corps mitigation required)
- Right-of-Way –
 - Lease agreement comments from Counsel to Rail Division
 - MBTA Agreement under final review by MBTA
 - Title research for TEs and private crossings underway
 - Next steps – Preliminary ROW Plan Approval
 - Appraisals for TEs
 - Negotiations with property owners
 - Final Lease Agreement(s) with Rail Division
 - Town Meeting Approval



Agenda

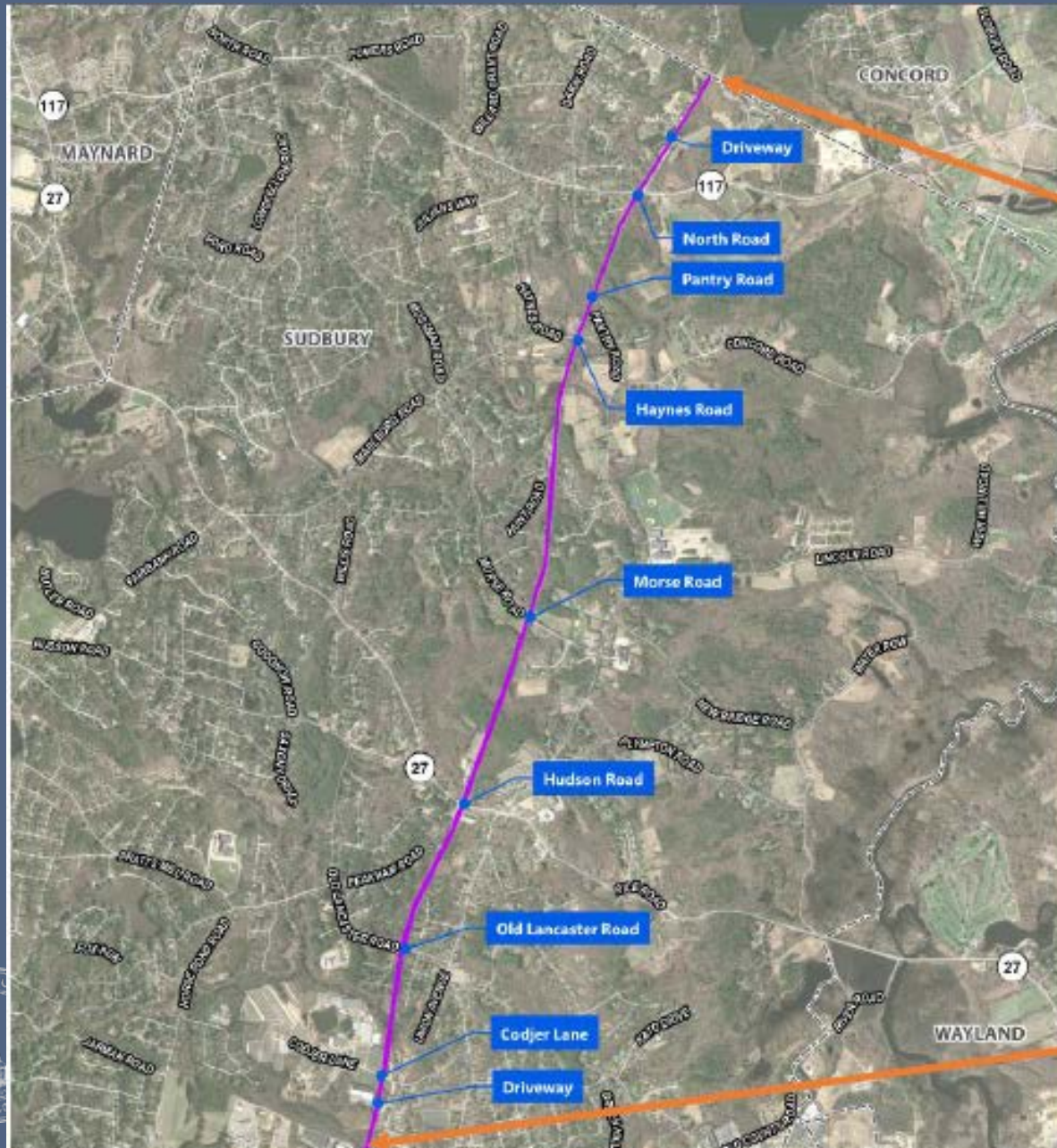
3) Design Review Considerations

- Roadway Crossings, RRFB Evaluation and safety concerns, and changes to splitter island design
- Discussion of railings and fencing
- Bridge details – railings at both bridges, façade at Pantry Brook
- Landscaping updates (general)
- Other accessories and amenities



Roadway Crossings, RRFB Evaluation and safety concerns, and changes to splitter island design

Roadway Crossings

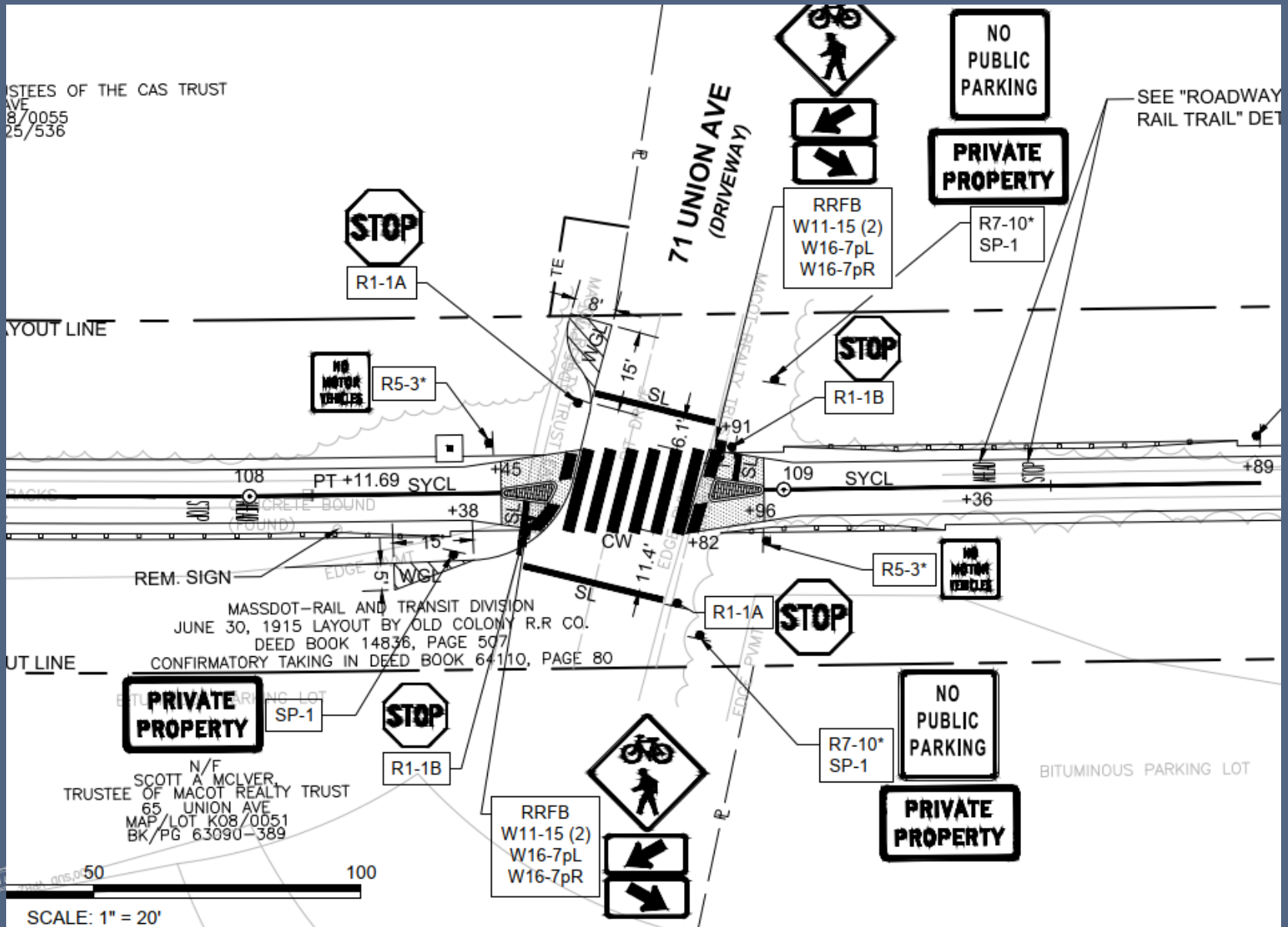


Town Line

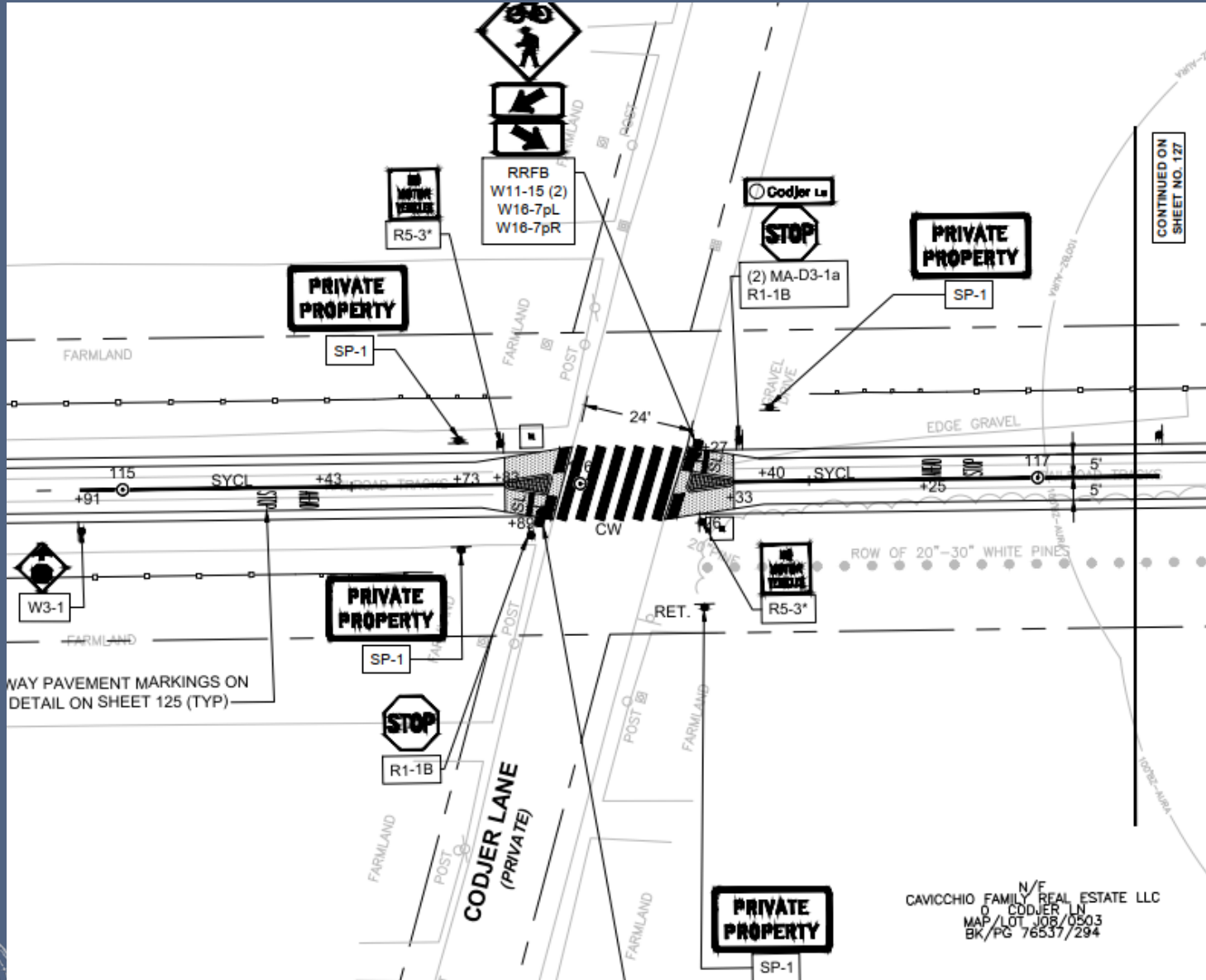
MBTA Corridor, Near
Union Ave. &
Station Rd.



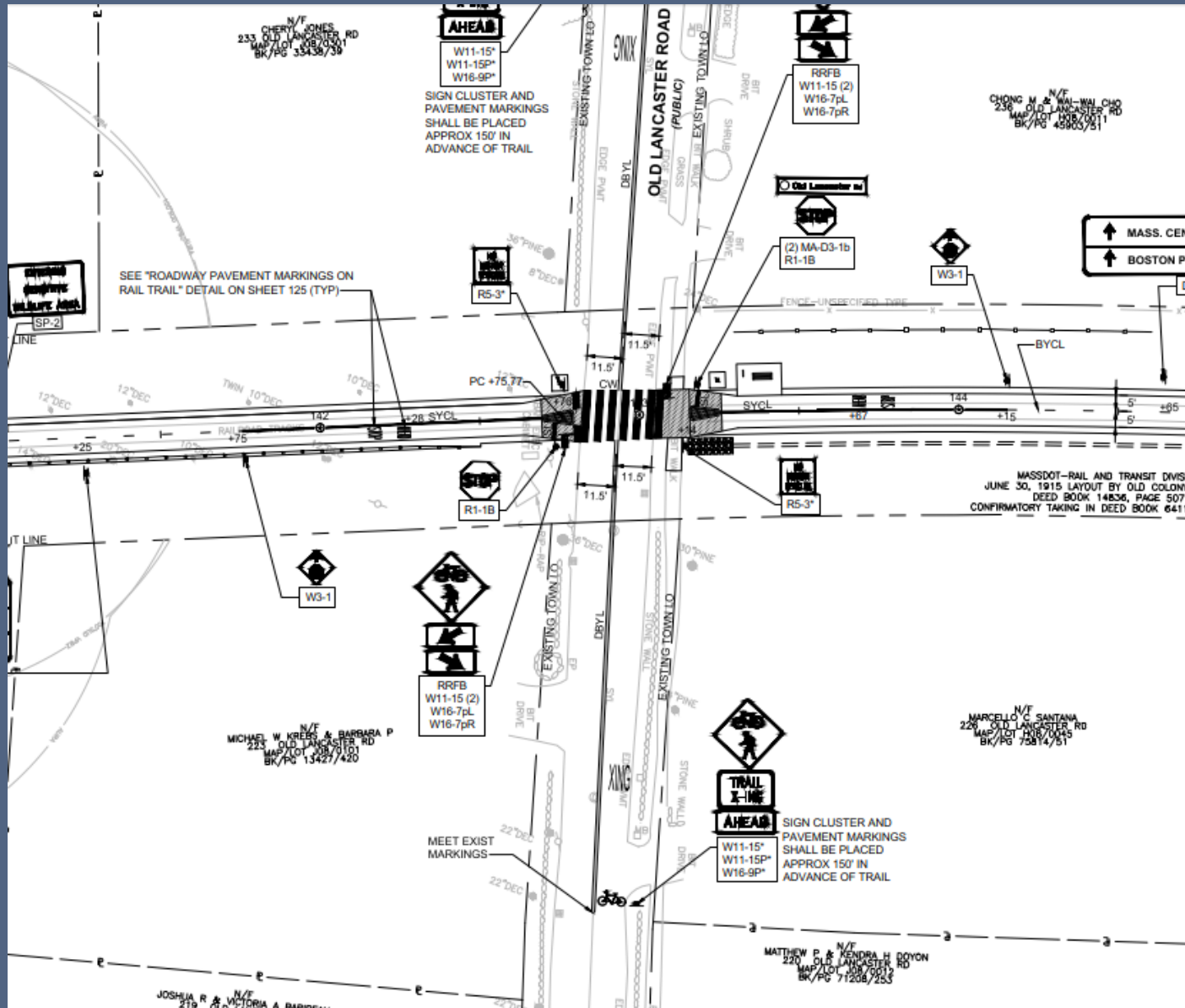
RRFB's and Splitter Islands



RRFB's and Splitter Islands

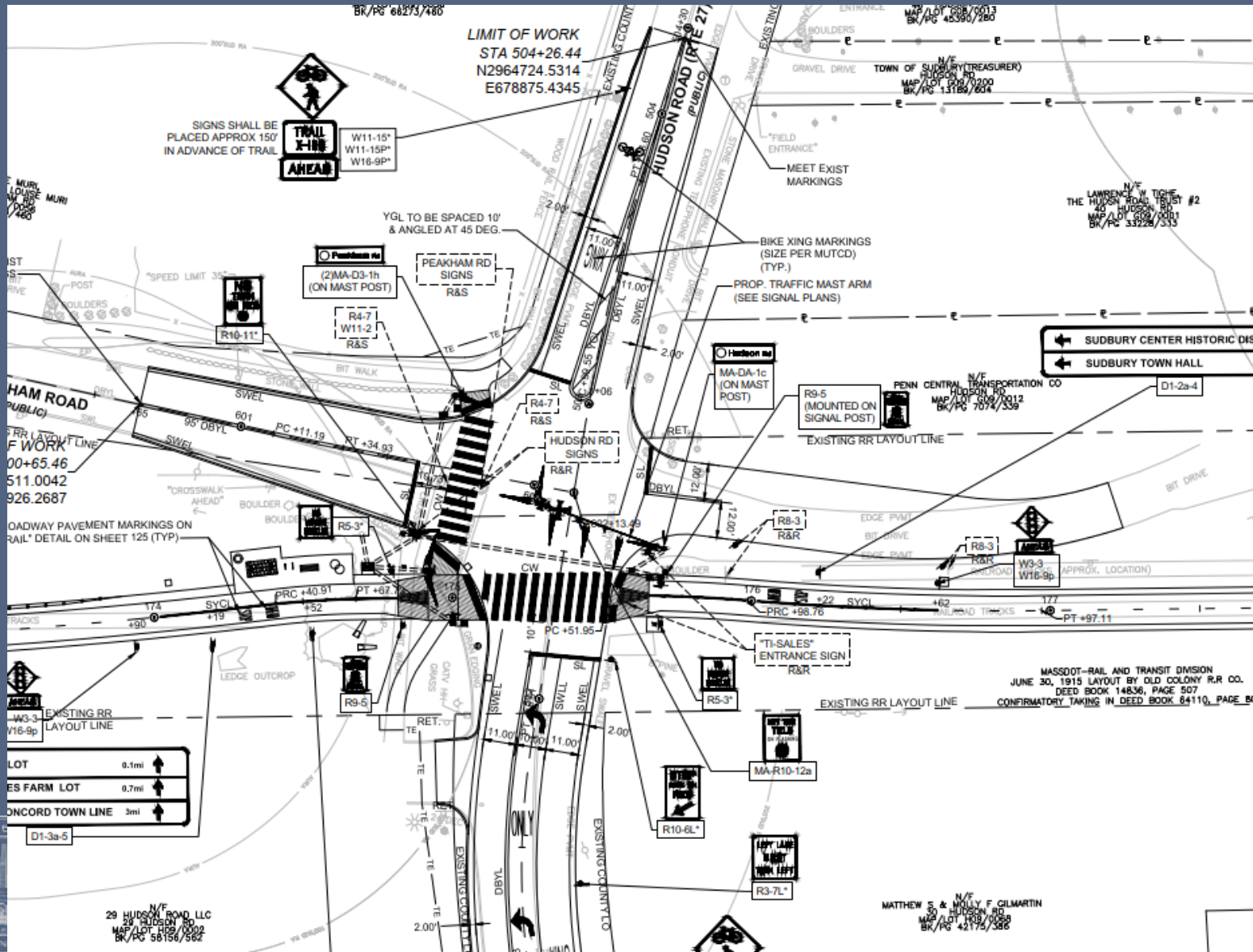


RRFB's and Splitter Islands



Traffic signal (with pedestrian phase) and Splitter Islands

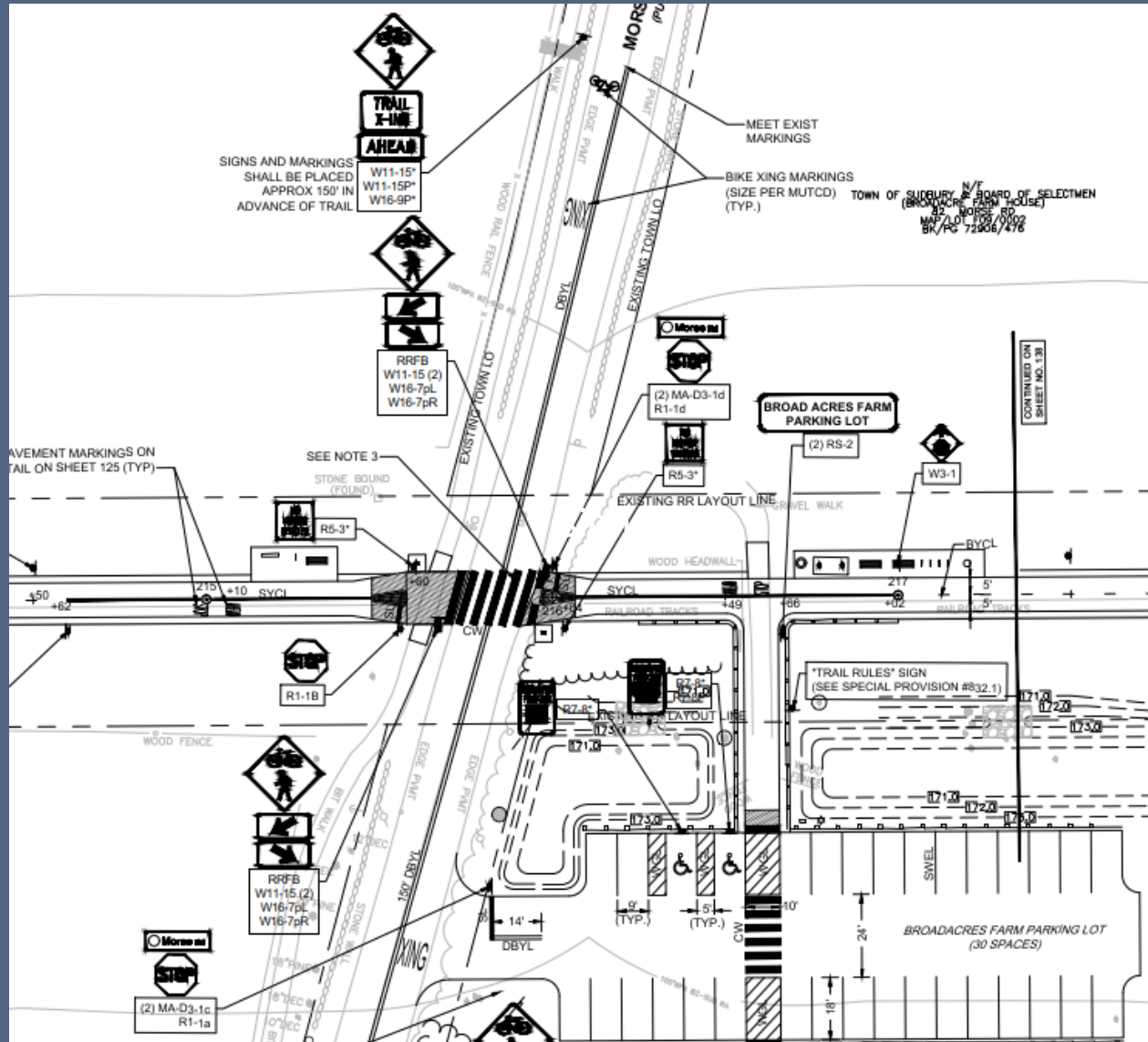
Hudson Road



29 HUDSON RD LLC
29 HUDSON RD
MAP/LOT 189/0002
BR/PG 56150/562

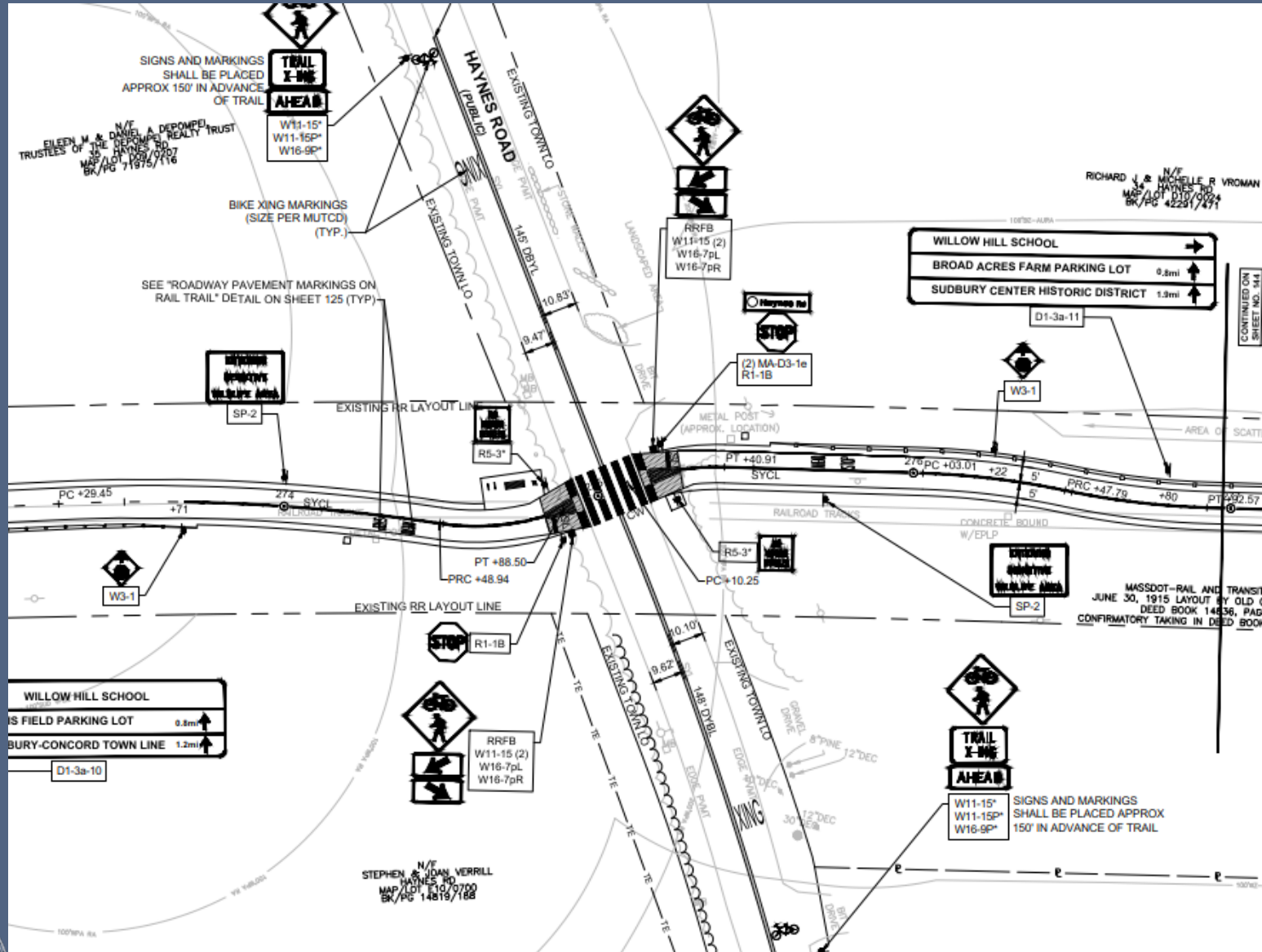
MATTHEW S. & HOLLY F. CILMARTIN
29 HUDSON RD
MAP/LOT 189/0002
BR/PG 42175/366

HILL

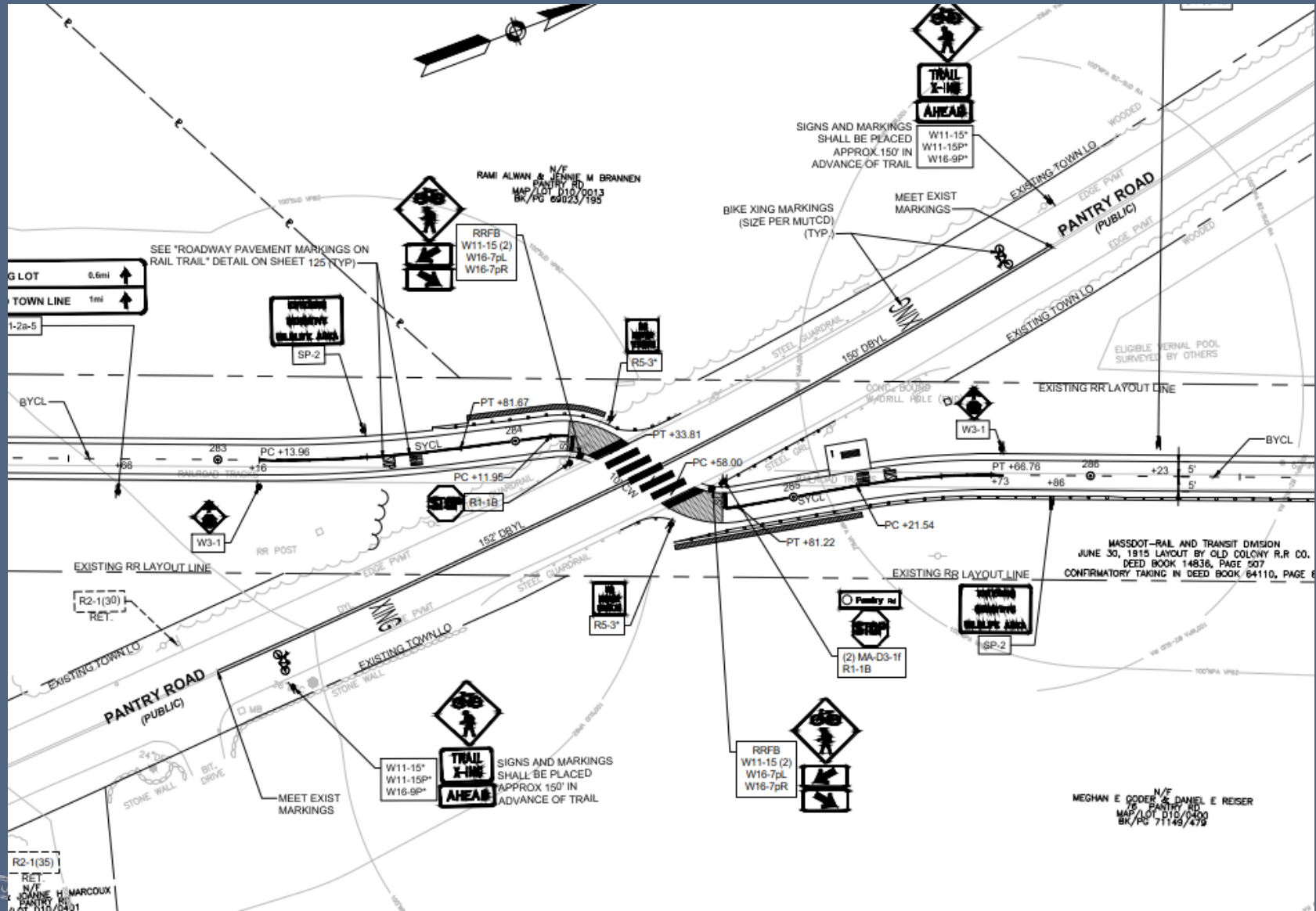


RRFB's and Splitter Islands

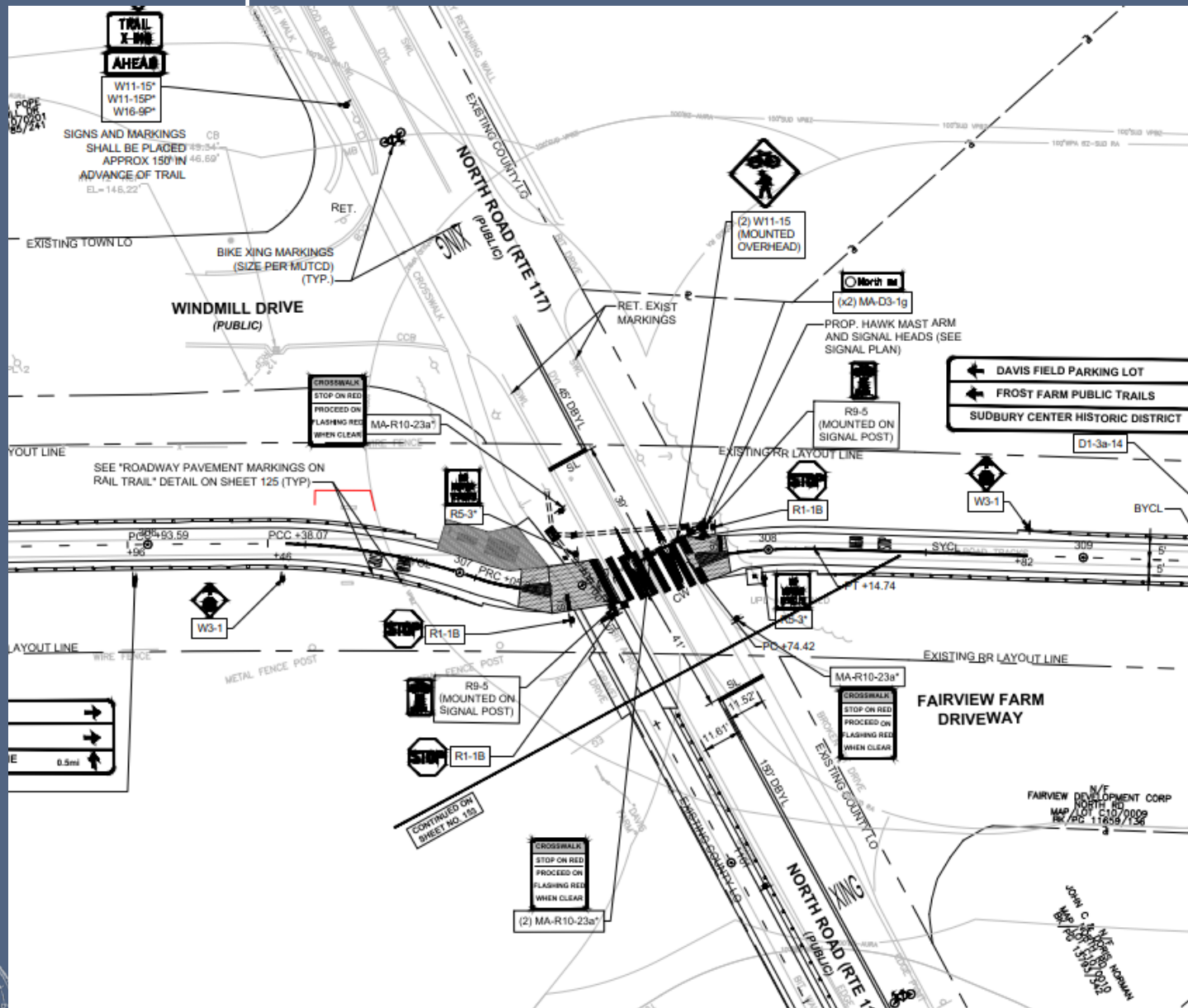
Haynes Road



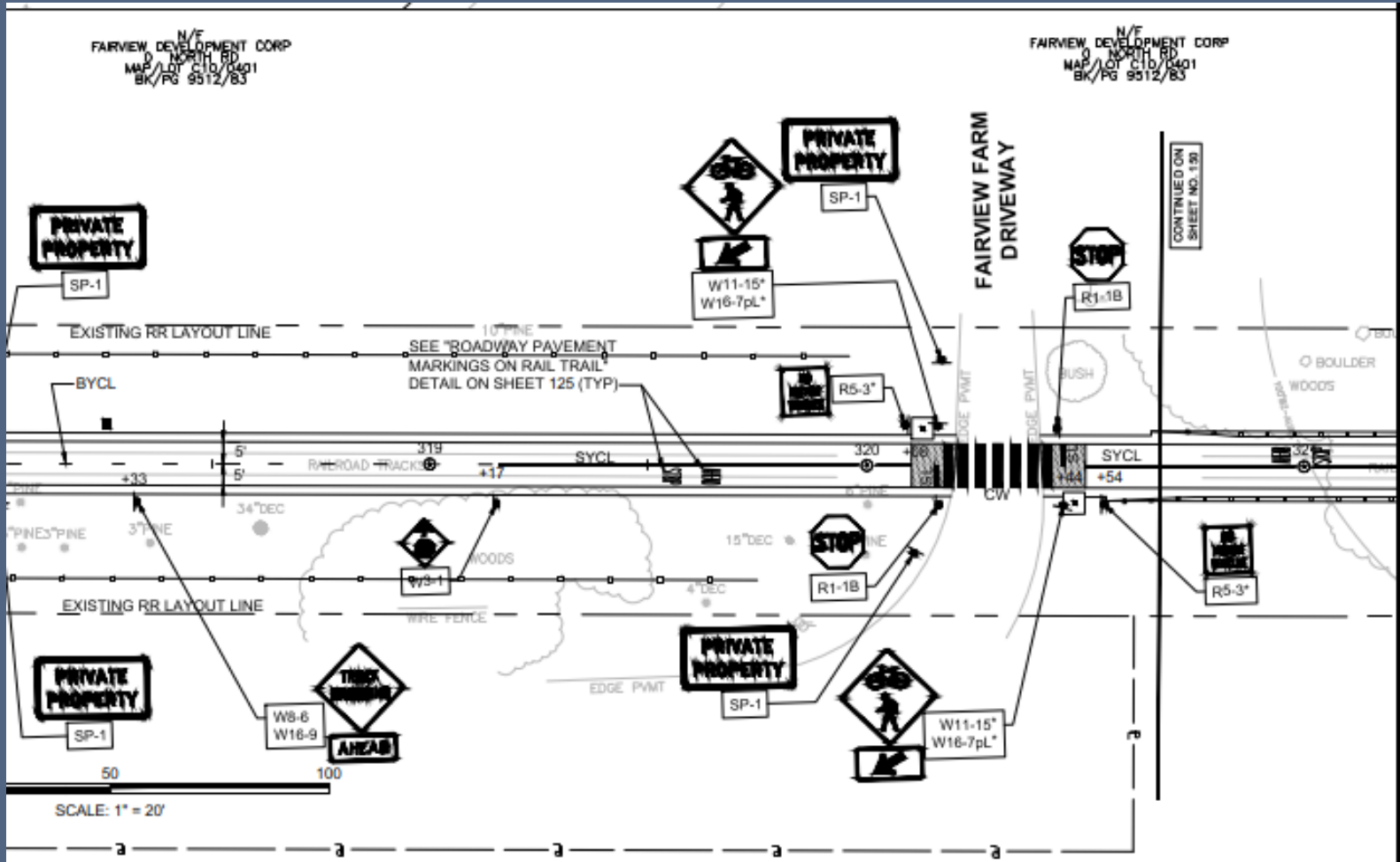
RRFB's and Splitter Islands



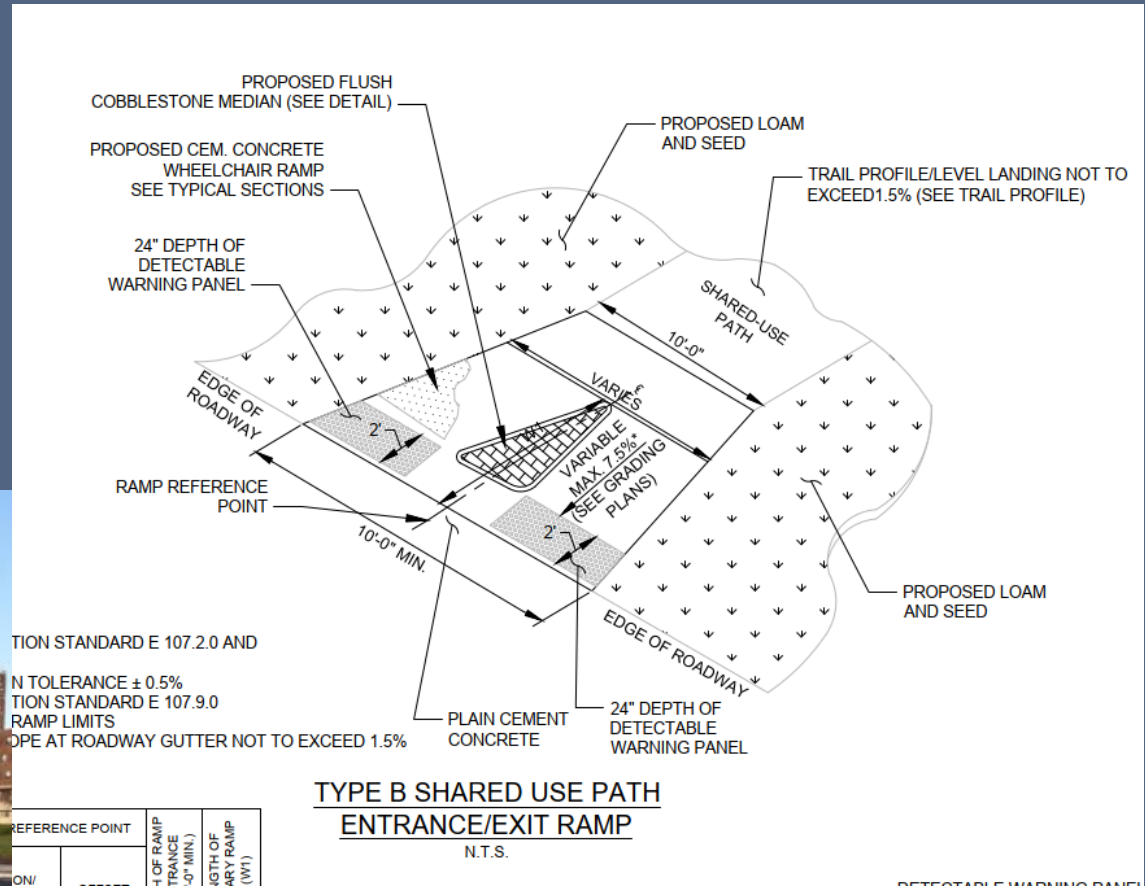
HAWK and Splitter Islands



RRFB's and Splitter Islands



Splitter Islands Design



- Material Type – stamped concrete, flush granite



Splitter Islands



- Material Type – stamped concrete, flush granite



Splitter Islands



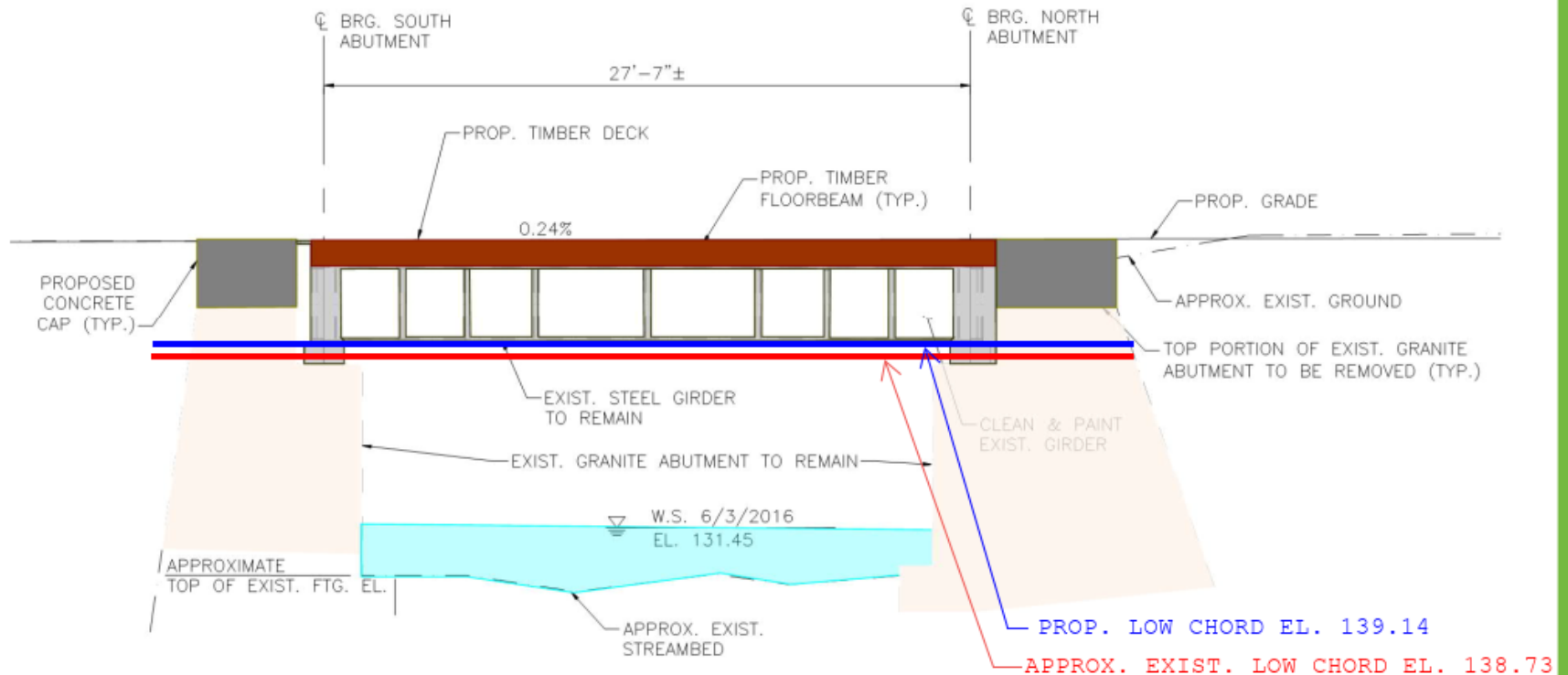
- Material Type – stamped concrete, flush granite



Bridge Details – Railings & Facade

Hop Brook Bridge

Proposed Design - Hop Brook



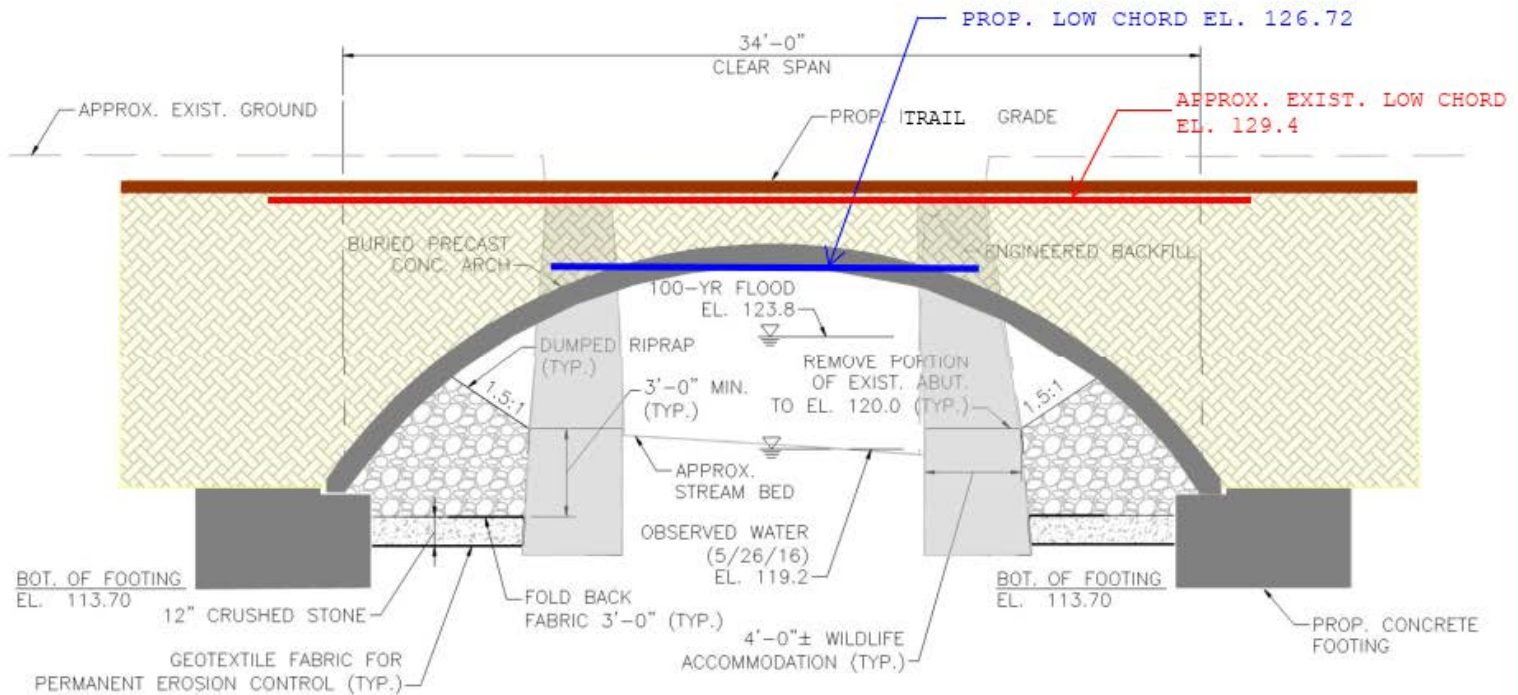
PROPOSED SECTION

Pantry Brook Concrete Arch Bridge



Bruce Freeman Rail Trail
Sudbury & Concord | Project File No. 608164

Proposed Design - Pantry Brook



PROPOSED CONCRETE ARCH



Bridge Railing Options



Bridge Railing Options



FUSS & O'NEILL

Bridge Railing Options



Bridge Railing Options



Pantry Brook Existing Condition & Stone Detail



Pantry Brook Facade

Form Liners – Running Bond Patterns



Custom Rock 1104 Random Cut Stone - Ipswich, MA



Pantry Brook Facade



Customrock 1302 – Random Running Bond Stone Formliner



Customrock 1106 – Random Cut Stone Running Bond Formliner



Pantry Brook Facade



Customrock 11016 – Random Cut Stone Formliner

Formliner

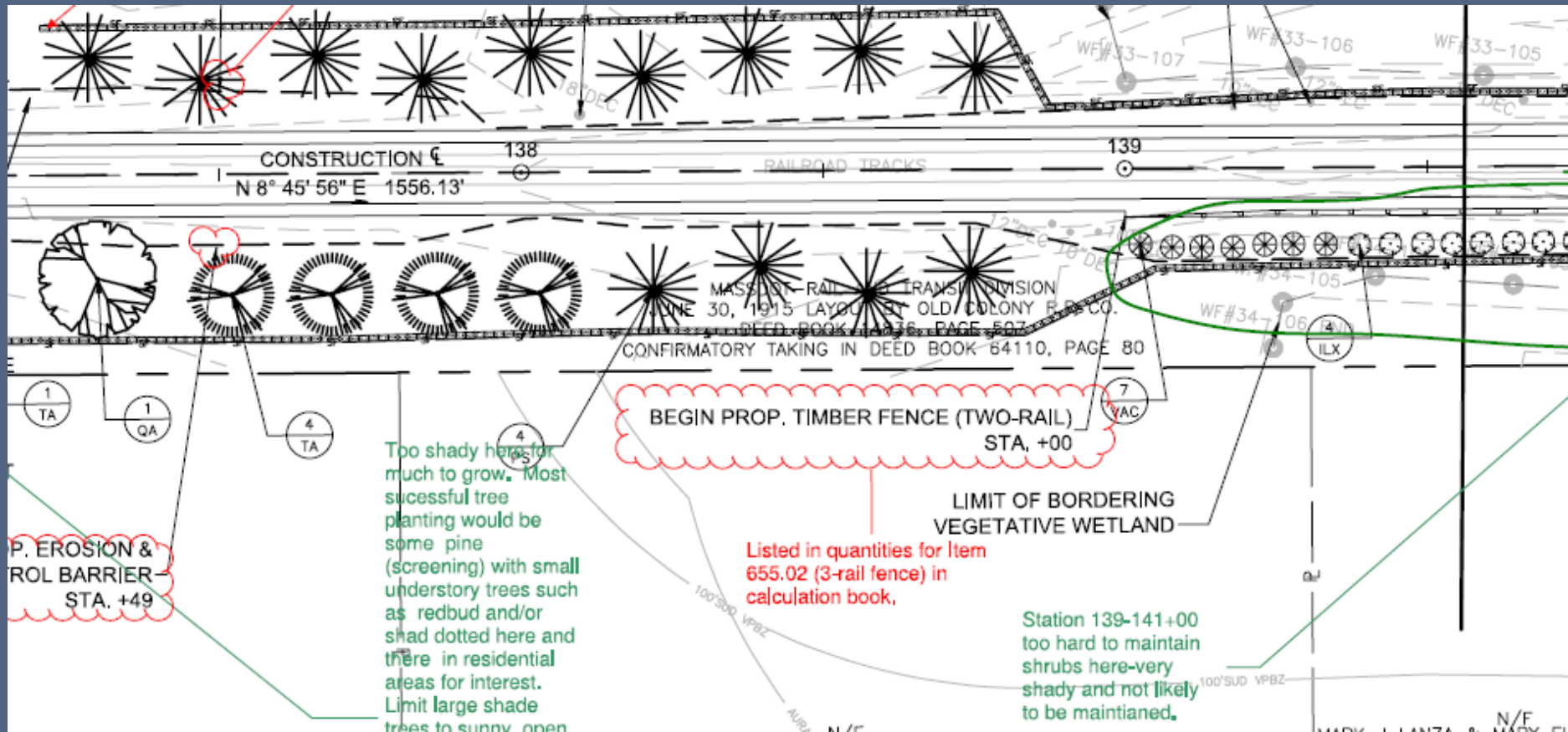


Customrock 1203 – New England Drystack Formliner



Landscape Revisions

- Site walk with MassDOT and F&O Landscape Architects October 13, 2021
 - Plantings
 - Rail fencing and plantings for slopes and user safety
 - Slope Stabilization



QUESTIONS AND COMMENTS FROM TASK FORCE MEMBERS?

Topics for Next Task Force Meeting – November 4, 2021

- Interpretive Signs
- Wayfinding
- Historic Artifacts
- Final Accessory Locations & Quantities

PUBLIC COMMENTS?

