

# **Construction of the Parkinson Field driveway and parking lot improvements**

---

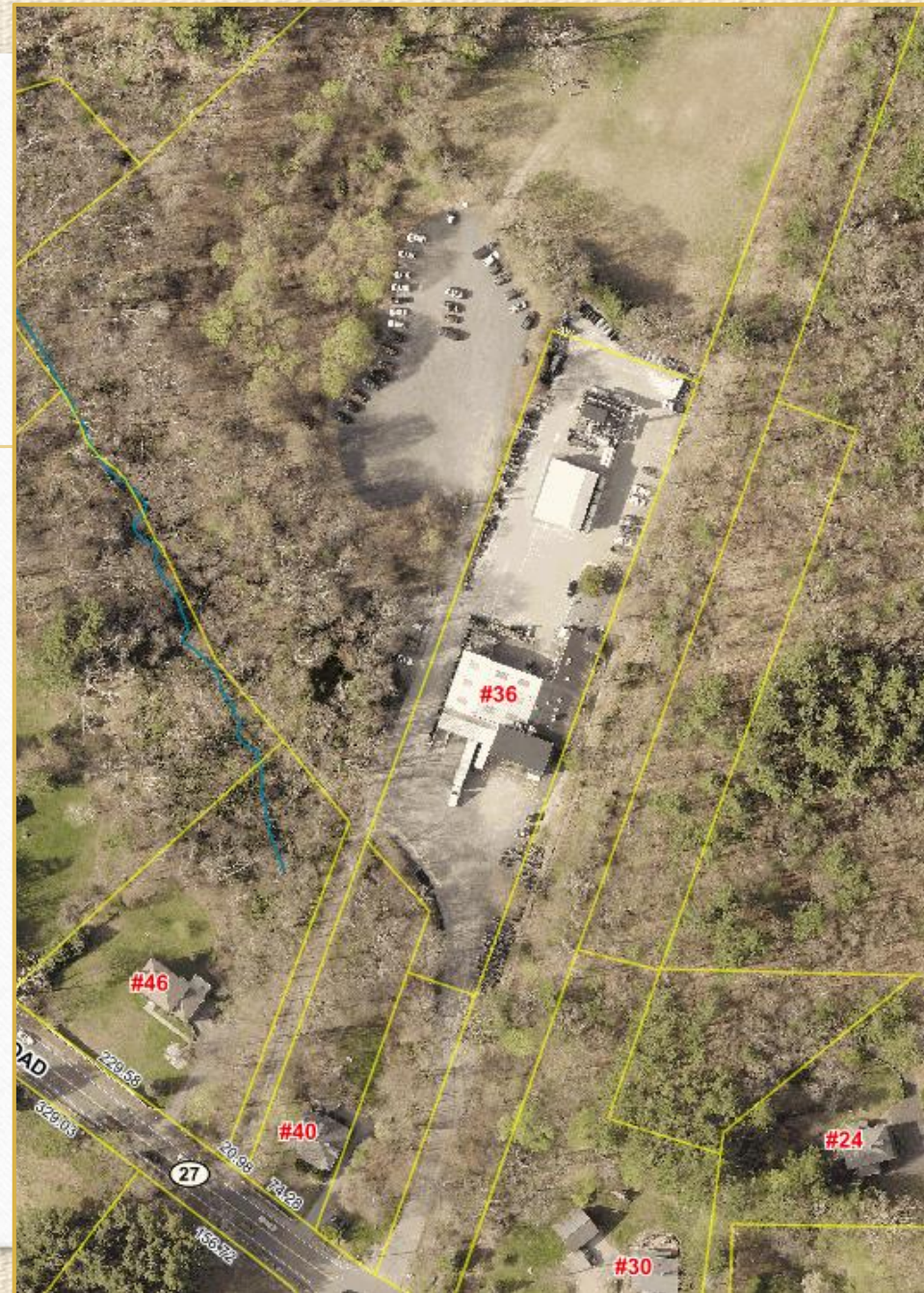
Sudbury Planning & Community Development and Parks,  
Recreation, and Aquatics application

For the Community Preservation Committee meeting  
December 10, 2025



# Locus map

The Parkinson Field driveway entrance is approximately 140 feet west of and opposite the Peakham Road/Hudson Road intersection. The driveway access at Hudson Road is overgrown with trees and shrubs, which obscures existing signs and the entrance itself. The driveway is currently a single lane extending 300 feet from Hudson Road to the field's parking area.





# Background Information

---

- Parkinson Field land was acquired by the Town in 1977 – the field is under the purview of the Parks and Recreation Commission, which voted to support this application at its November 2025 meeting.
- The Rail Trails Advisory Committee also voted to support this application at its meeting in August 2025.
- In 2024, the Community Preservation Committee and Town meeting voted to approve \$100,000 toward the design, engineering, and permitting for driveway access and parking lot improvements that serves both Parkinson Field and the Bruce Freeman Rail Trail handicapped accessible path.
- TEC, Inc. was hired in the summer of 2025 to begin survey and conceptual design for the driveway and parking lot. Plans are moving forward with the Request for Determination of Applicability recently reviewed by the Conservation Commission at their December 8, 2025 meeting.

# Project description

---

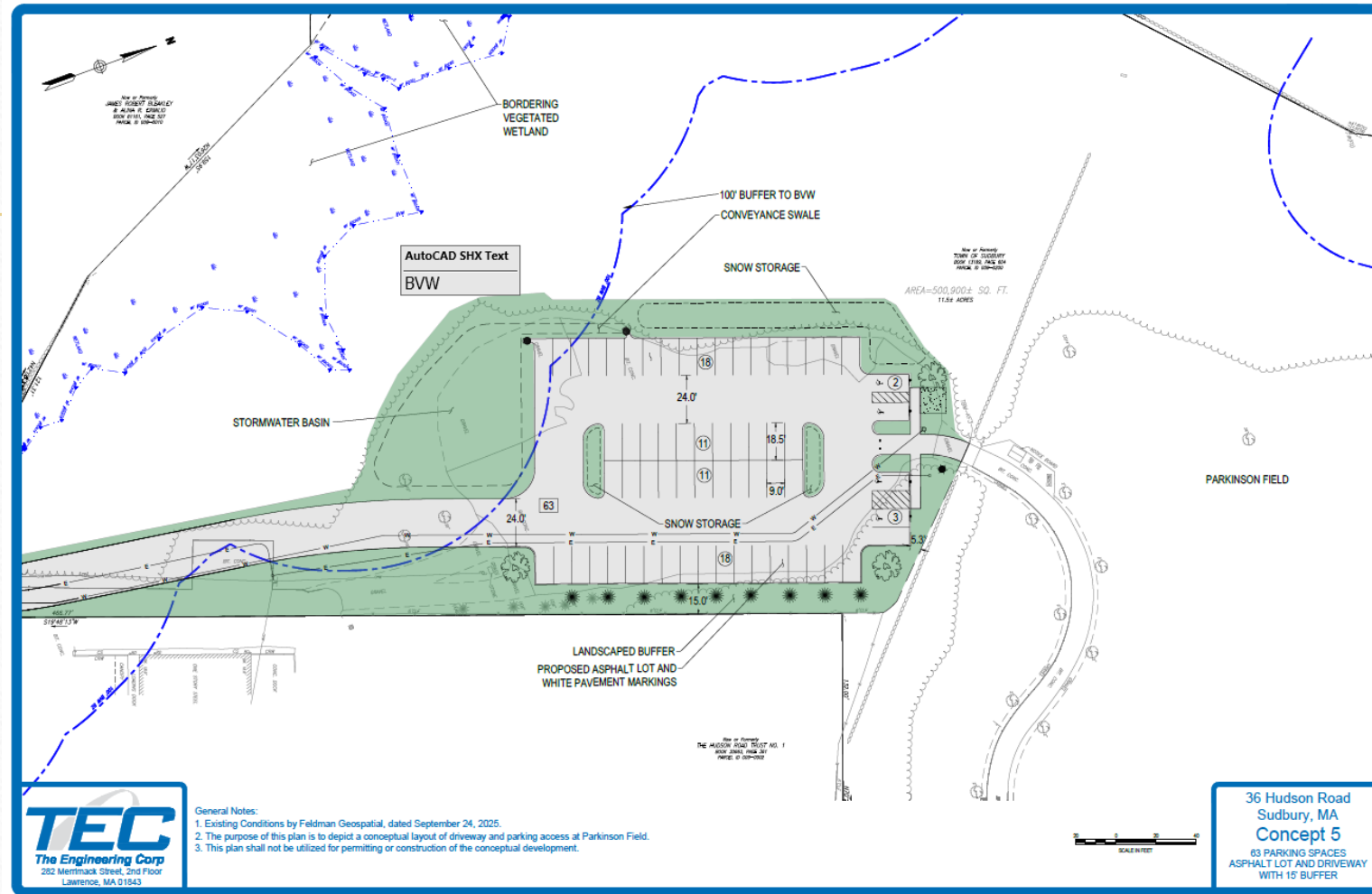
The Town seeks \$1,398,000 from the Community Preservation Committee for the construction of driveway access and parking lot improvements for Parkinson Field to serve both the recreation area and the Bruce Freeman Rail Trail.

As of November 2025, the survey has been conducted and the wetlands flagging completed. An initial design concept showing 69 parking spaces (inclusive of 4 handicapped accessible spaces) has been refined with input from town staff representing Planning, Conservation, Public Works and Parks, Recreation, and Aquatics. The plan also includes lighting for the parking lot and infrastructure for future recreation field development.

There has been initial outreach to the abutting Ti-SALES commercial site with a meeting to be scheduled in December.



# Conceptual Plan #5





# Construction of the Parkinson Field driveway and parking lot improvements

---

Community Preservation Committee

Questions?