

Comprehensive Wastewater Management Plan (CWMP)

Project Update

Public Meeting Via ZOOM

February 3, 2022


Agenda

- Town and Woodard & Curran Introductions
- Project Background
- Project Scope
- Study Areas Summary
- Needs Areas Summary
- Environmental Resources Summary
- Draft Recommended Solutions
- MEPA Filing Discussion
- Public Outreach Efforts

Introduction / Background

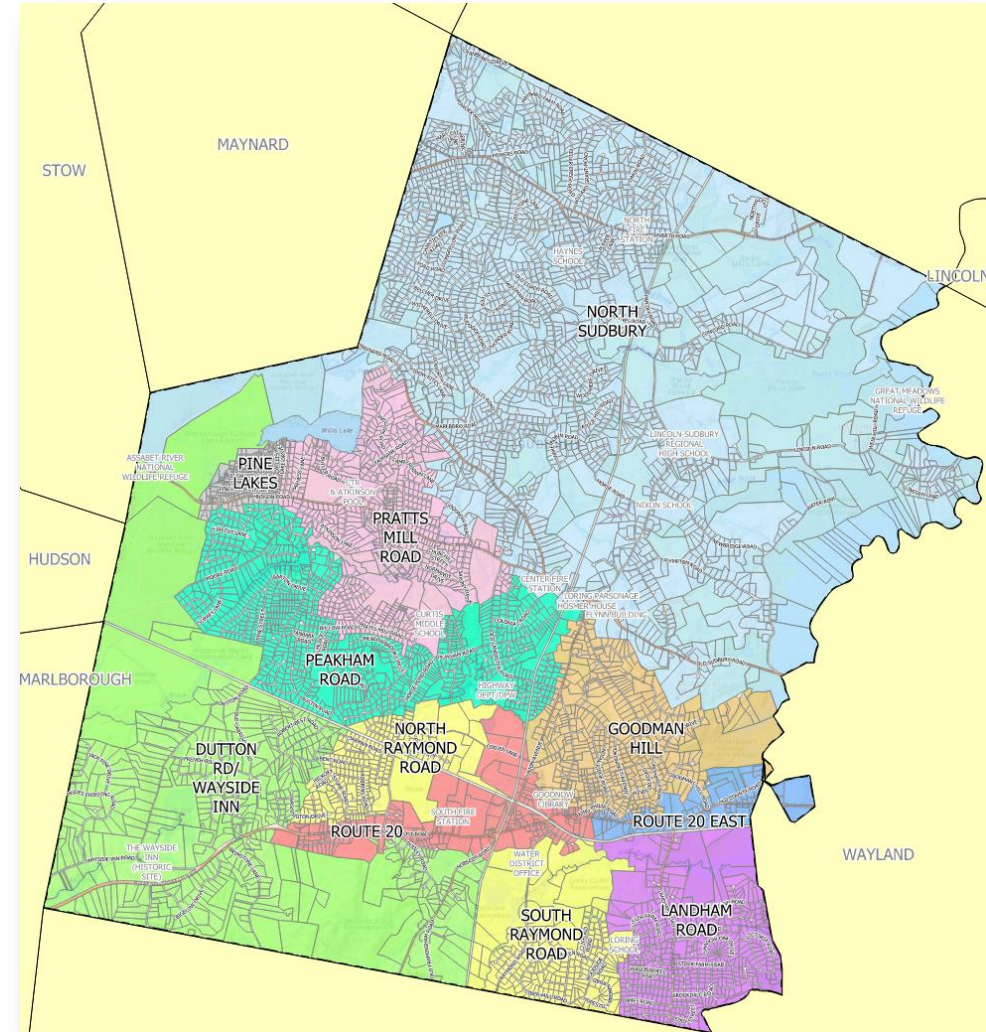
- CWMP Team
 - Town of Sudbury
 - Woodard & Curran
- Town Wastewater Studies Date Back to the 1980s
 - *All Reports Detail Environmental Concerns Related to the Town's Main Drinking Water Supply, as well as Potential For Economic Development, as Reasons to Sewer Route 20 Area*
- Goal
 - Complete Town-wide Study With Public Participation
 - Preserve and Protect Sudbury's Drinking Water Supplies
 - Benefit From 20-Year Planning Document
 - Submit State and Regulatory Filings – Full Approvals
 - Leverage Funding Opportunities

Project Scope

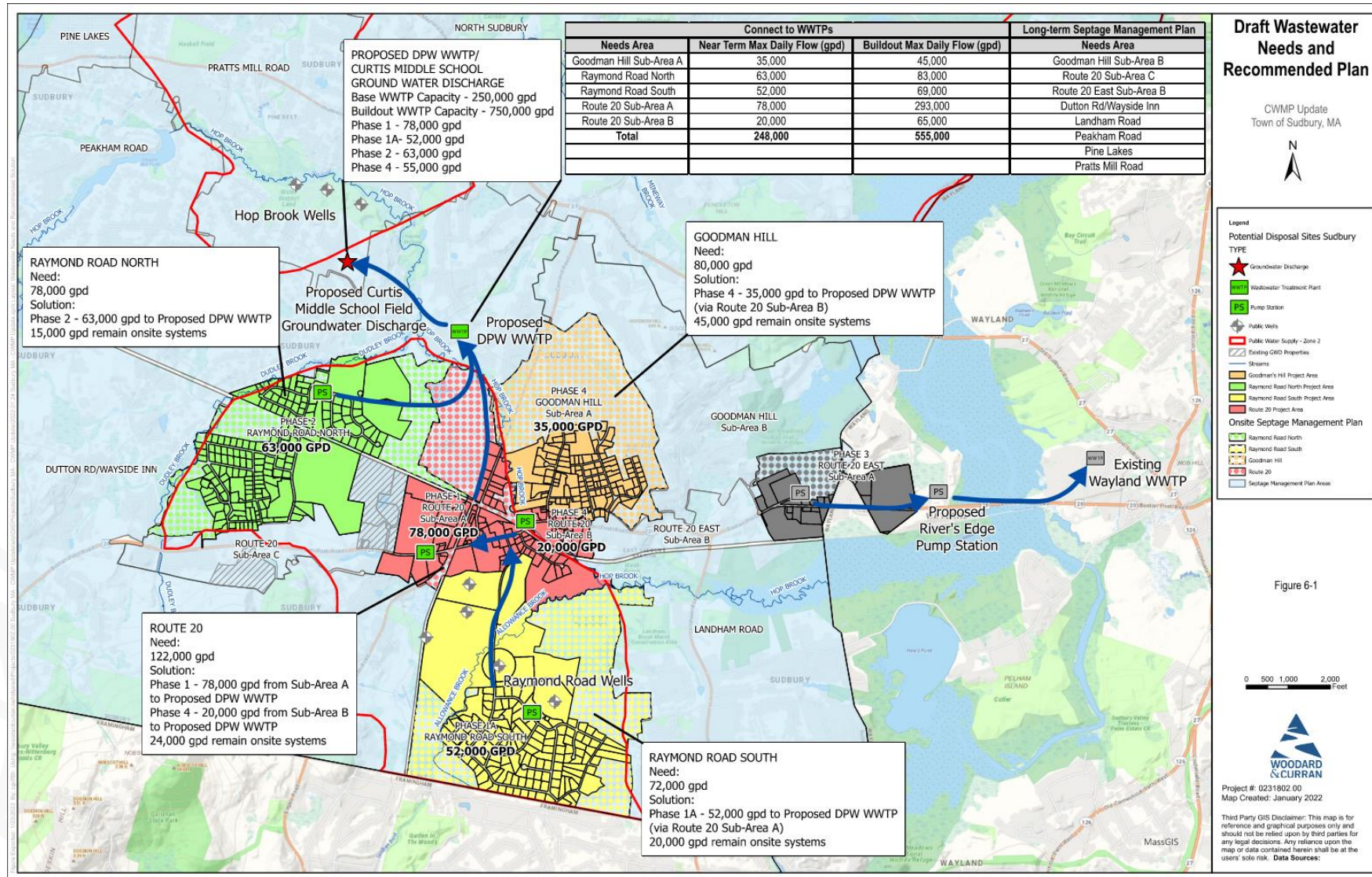
- Update Wastewater Planning to Date to Meet Current Guidelines
 - Kick-Off Meetings – Internal and External
 - Review and Update
 - Areas of Wastewater Study
 - Wastewater Flows
 - Previous Sites Recommended for Wastewater Use
 - Prepare Draft Report for Town Review
 - Strategize State Filings
 - ***Environmental Impact Study – Massachusetts Environmental Policy Act (MEPA) Filing***
- 
- A large blue bracket on the right side of the slide, grouping the first three main bullet points: "Update Wastewater Planning to Date to Meet Current Guidelines", "Review and Update", and "Prepare Draft Report for Town Review".
- Completed

Develop Study Areas

- Town-wide Analysis
- Key Areas:
 - Hop Brook Wells (Pratts Mill)
 - Raymond Road Wells
 - Route 20 Corridor
- Developed Needs Areas:
 - Reviewed Health Department Records
 - Met With Health Director, Bill Murphy
 - GIS Mapping – Parcel Based
 - Historical / Environmental



Needs Areas & Draft Recommended Plan



Environmental Resources

■ Town-wide Overview

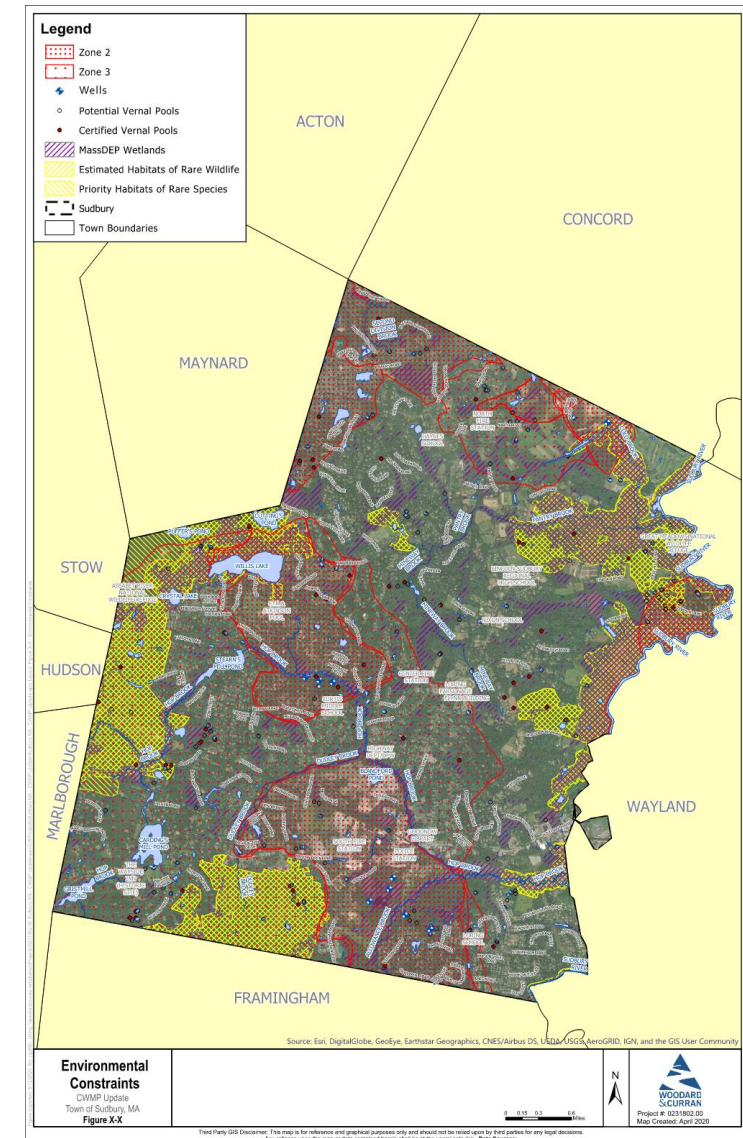
- Delineated Individual Needs Areas
- Identified Resource Areas on a Needs Areas Basis

■ Key Environmental / Sensitive Resources

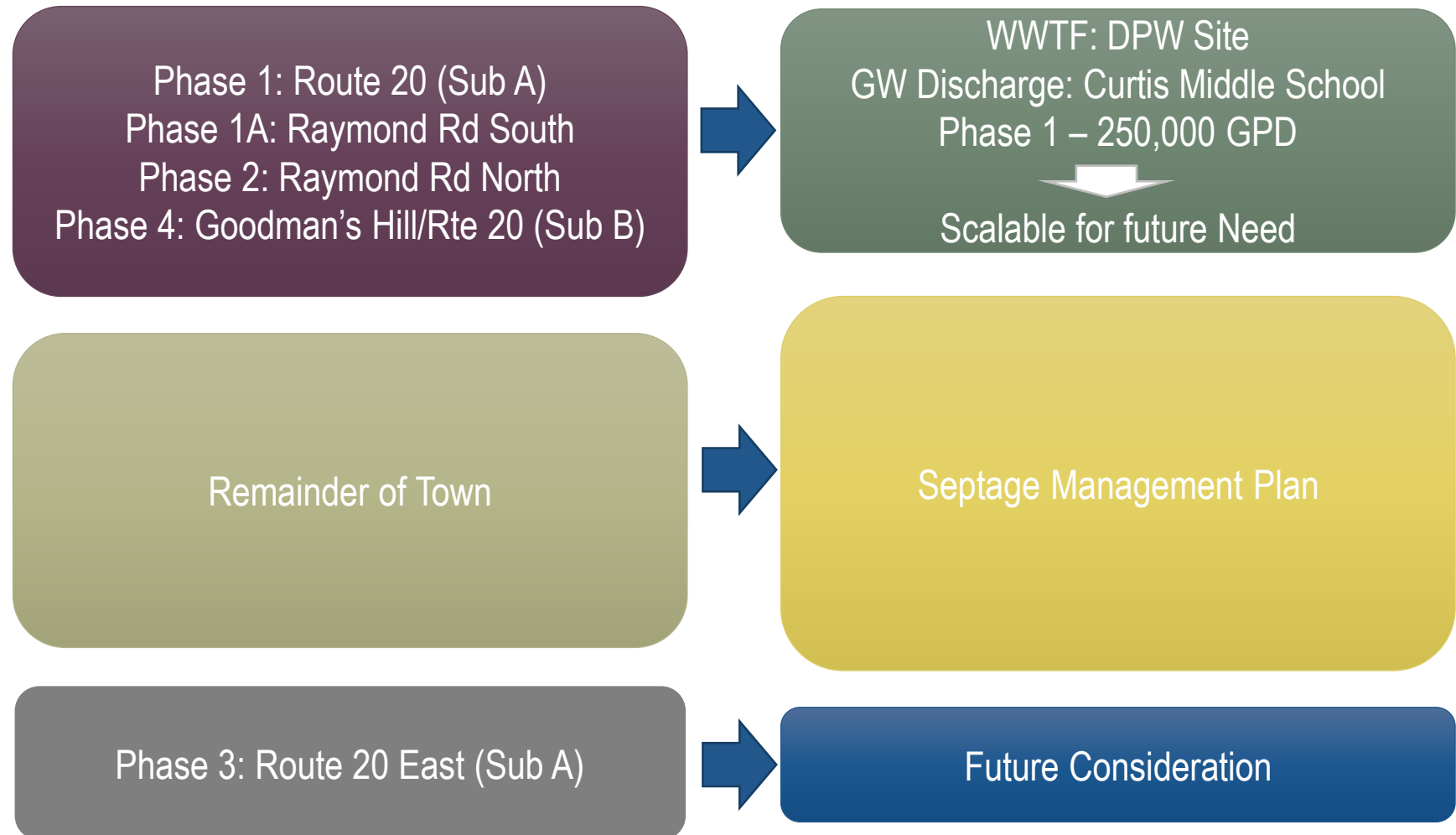
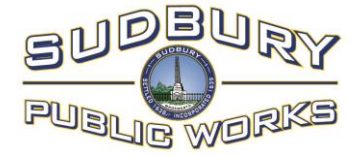
- Drinking Water Supplies
- Wetlands / Buffer Areas
- NHESP & Vernal pools
- Historic / Archaeological
- AUL & 21E Sites

■ Key Areas:

- Hop Brook Wells (Pratts Mill)
- Raymond Road Wells
- Route 20 Corridor



Wastewater Needs & Draft Recommended Solutions



Schedule of Tasks

Tasks	Timeframe
Project Update Memorandums	Monthly
<i>Public Outreach (Supported by Capital Strategic Solutions)</i> <ul style="list-style-type: none"> - Mailings - Website Updates - Social Media Announcements - General & Targeted Public Workshops - Sudbury Chamber of Commerce Meetings 	May 2021 - Ongoing
State and Regulatory Meetings	On-Going
Funding Applications (MassWorks, State Revolving Fund, Stimulus, ARPA, etc.)	On-Going
Massachusetts Environmental Policy Act (MEPA) Filing	December 2021

MEPA Filing

- Filed Expanded Environmental Notification Form (EENF) – December 2021
- Key Items:
 - Requested Single Environmental Impact Report – One Major Filing Versus Two
 - CWMP Draft Recommended Plan
 - Draft Environmental Impact Report
 - ✓ Historical Resources
 - ✓ Wetland Resources
 - New MEPA Regulations Include:
 - Environmental Justice Protocol
 - Climate Change and Adaptation
- Supplemental Information to be Submitted
 - Draft CWMP – February 4, 2022
- Comments Extended to March 11, 2022
- MEPA Certificate – March 18, 2022

MEPA Filing

- EEA No. 16510 – Sudbury CWMP
- Access EENF Filing at <https://Sudbury.ma.us/dpw/cwmp>
- Comments Sent Through MEPA Portal: [Mass.Gov - MEPA Public Comments \(state.ma.us\)](https://www.mass.gov/info-details/mepea-public-comments). *Comments Due 3/11/22*
- MEPA Certificate – March 18, 2022
 - Determines Next Submittal – Requested SEIR
- Next Steps

Public Outreach Efforts

■ Schedule for Outreach

- Town Website Updated Regularly <https://Sudbury.ma.us/dpw/cwmp>
- Public Hearing Late March
 - Results of MEPA Filing
 - Plan to Complete CWMP
- Continuation of Outreach Once CWMP/MEPA is Approved
 - Spring/Summer 2022
 - Outlook to Future Town Meeting to Accept CWMP
- Sudbury Chamber of Commerce
 - Collaboration With Sudbury Business Community

Questions & Answers

