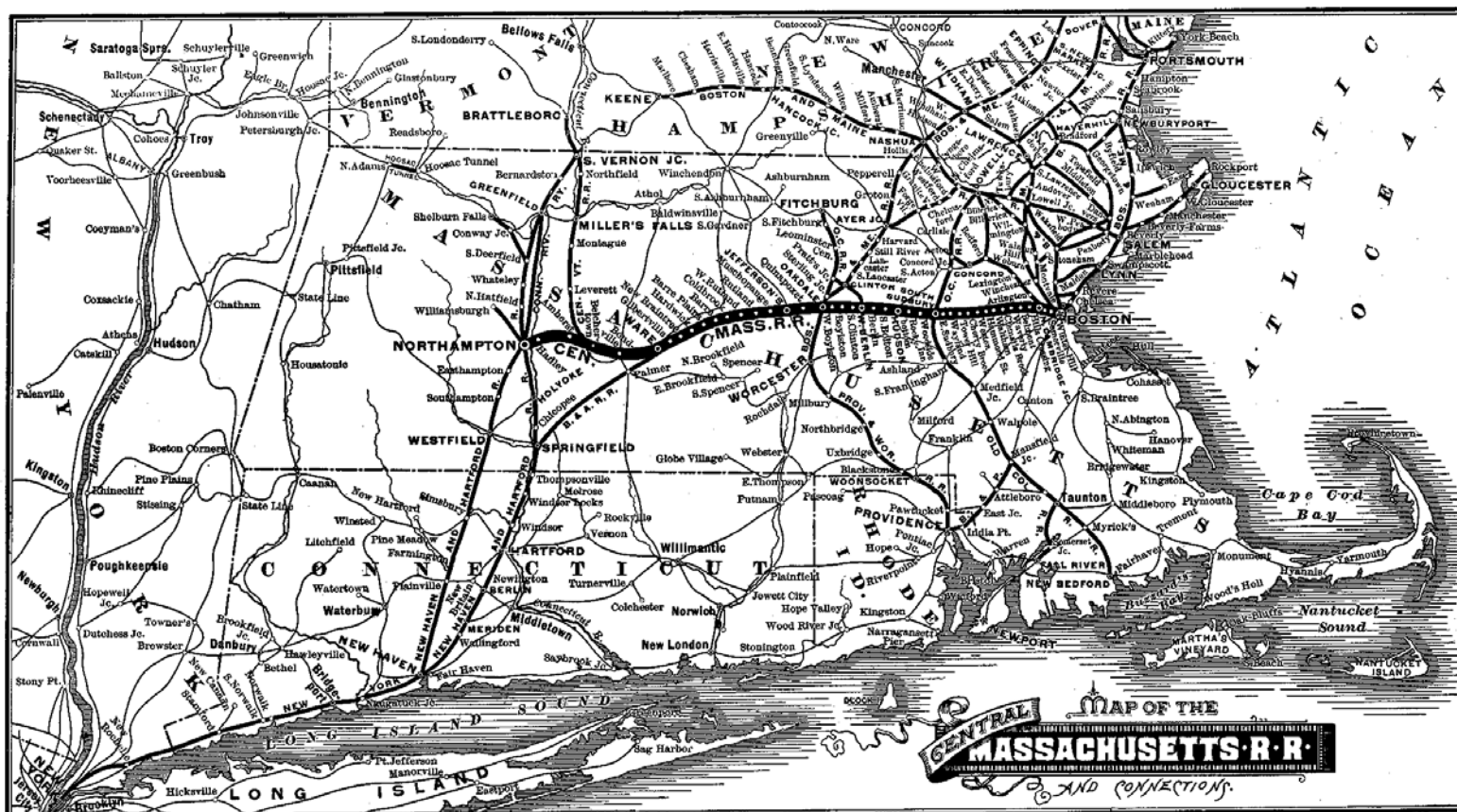


MASS CENTRAL RAIL TRAIL

Update and Status

2013 Massachusetts Trails Conference



dcr
Massachusetts



MCRT - Wayside Berlin to Waltham



Mass Central Rail Trail - Waltham to Berlin Section

Legend

MA Towns: Solid Outline

Major Roads

Road Classification

Limited Access Highway

Multi-lane Hwy, not limited access

Other Numbered Highway

Bay Circuit Trail

Bruce Freeman RT

Assabet River RT

MCRT - MBTA Corridor

dcr
Massachusetts

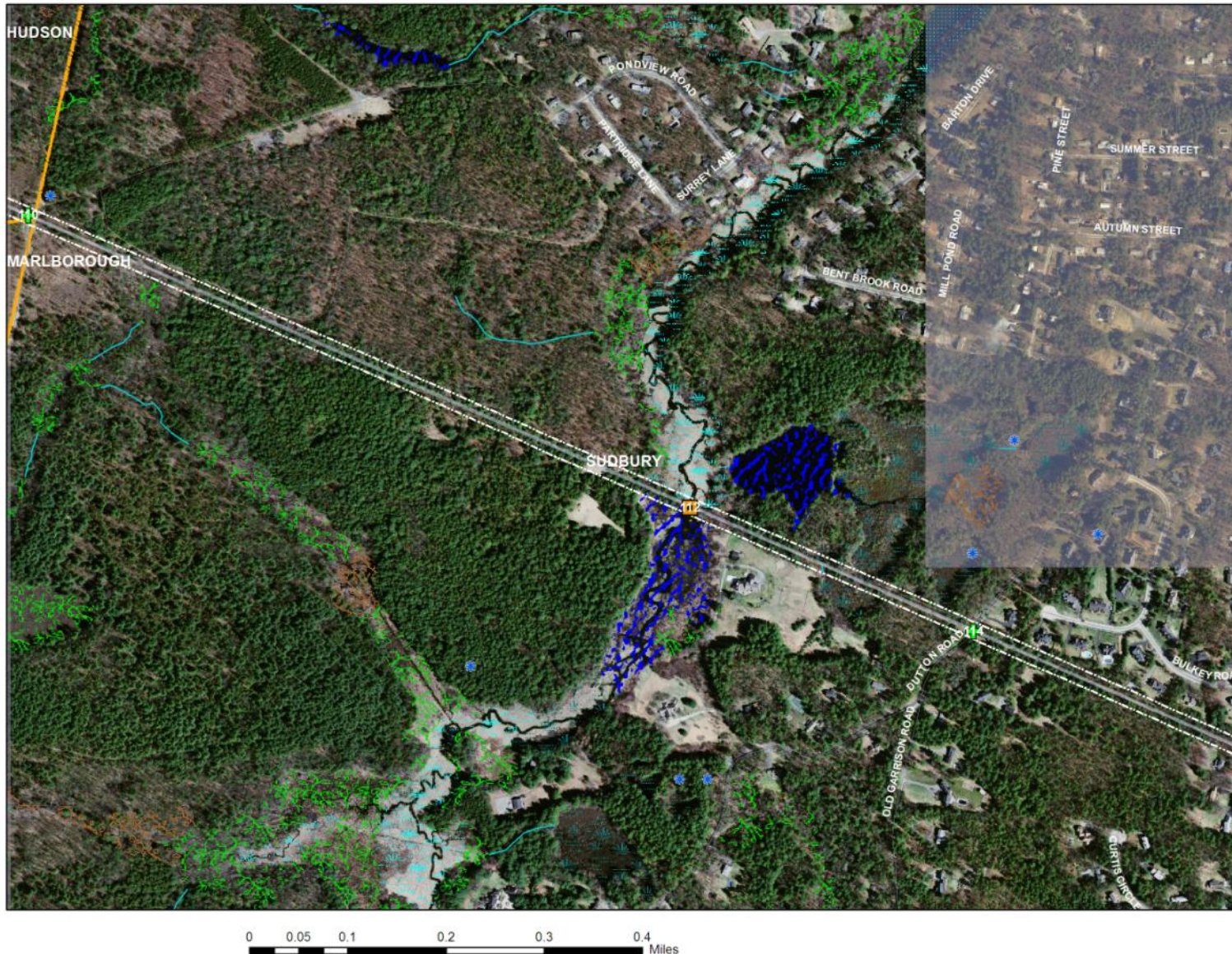


For planning purposes only
Data from MassGIS, DCR, EOT Val Maps,

MCRT – Wayside - Sudbury

Mass Central
Rail Trail -
Wayside Branch

Sudbury, MA



Legend

- MBTA ROW - DCR Lease
- Proposed Path Corridor
- Road Crossing
- Bridge
- Underpass
- Bridge - Overgrade - Missing
- MA Towns..Solid Outline
- NHESP Certified Vernal Pools

dc
Massachusetts



For planning purposes only.
Data from MassGIS, DCR, EOT Val Maps,

MCRT – Wayside - Sudbury



0 0.05 0.1 0.2 0.3 0.4 Miles

Mass Central
Rail Trail -
Wayside

Sudbury, MA

Legend

- MBTA ROW - DCR Lease
- Proposed Path Corridor
- Road Crossing
- Bridge
- Underpass
- Bridge - Overgrade - Missing
- MA Towns..Solid Outline
- NHPSP Certified Vernal Pools

dcr
Massachusetts



For planning purposes only.
Data from MassGIS, DCR, EOT Val Maps.

MCRT – Wayside - Sudbury

Mass Central
Rail Trail -
Wayside

Sudbury, MA

Legend

- MBTA ROW - DCR Lease
- Proposed Path Corridor
- Road Crossing
- Bridge
- Underpass
- Bridge - Overgrade - Missing
- MA Towns..Solid Outline
- NHESP Certified Vernal Pools



0 0.05 0.1 0.2 0.3 0.4 Miles

dc
Massachusetts



For planning purposes only.
Data from MassGIS, DCR, EOT Val Maps,

MCRT – Wayside - Sudbury



0 0.05 0.1 0.2 0.3 0.4 Miles

Mass Central
Rail Trail -
Wayside

Sudbury, MA

Legend

- MBTA ROW - DCR Lease
- Proposed Path Corridor
- Road Crossing
- Bridge
- Underpass
- Bridge - Overgrade - Missing
- MA Towns..Solid Outline
- NHESP Certified Vernal Pools

dc
Massachusetts



For planning purposes only.
Data from MassGIS, DCR, EOT Val Maps,

Sudbury



Sudbury



Sudbury



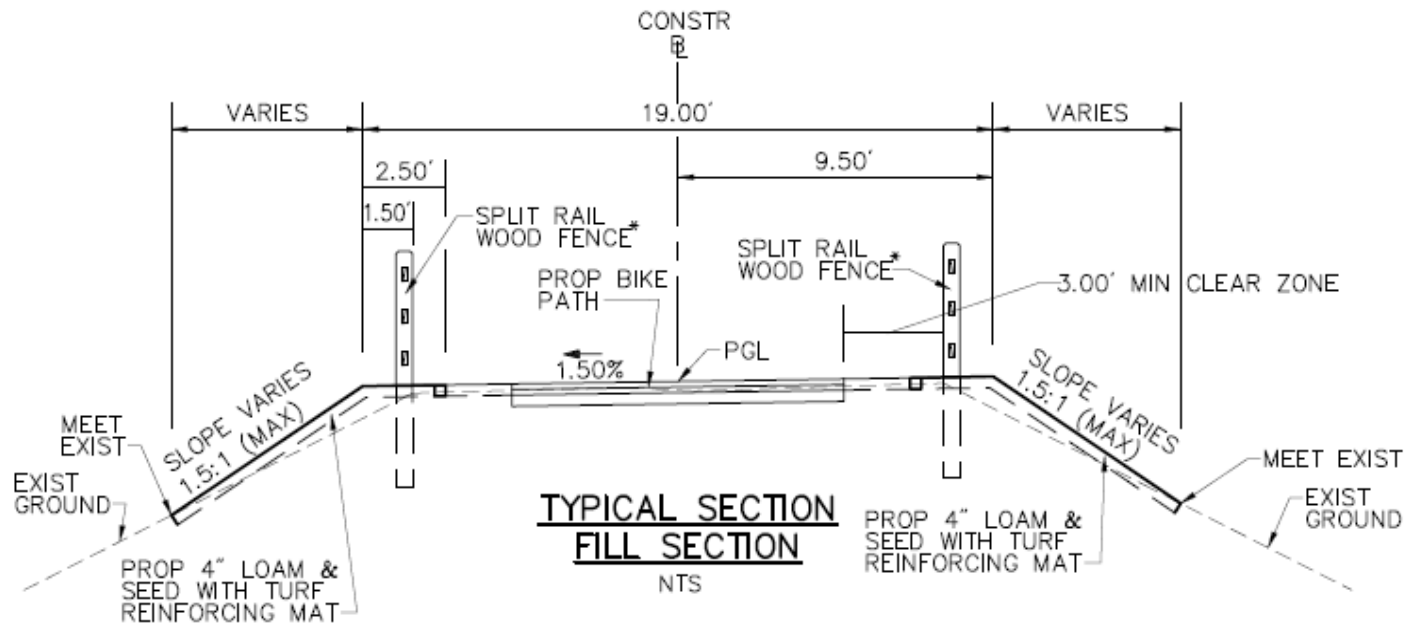
Sudbury



Sudbury



MCRT – Wayside– Typical “fill” section

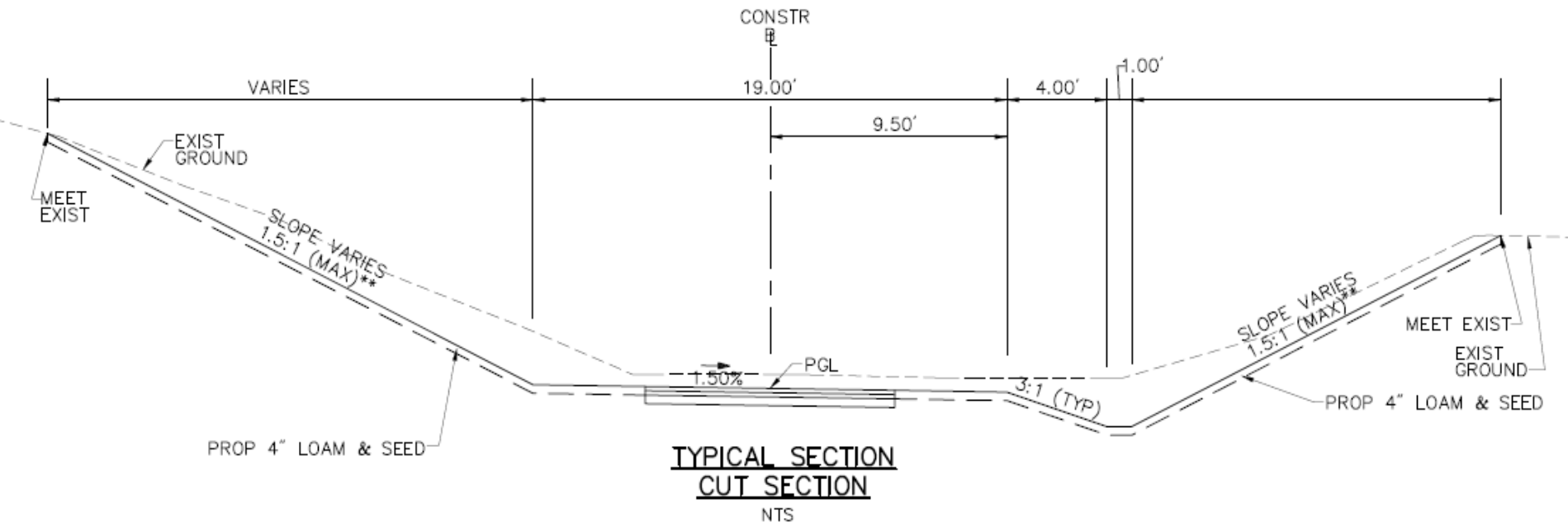


* SPLIT RAIL FENCE TO BE USED ONLY AS NEEDED

CONSTRUCTION DETAILS
1 OF 16

MASS CENTRAL
RAIL TRAIL

MCRT – Wayside– Typical “cut” section



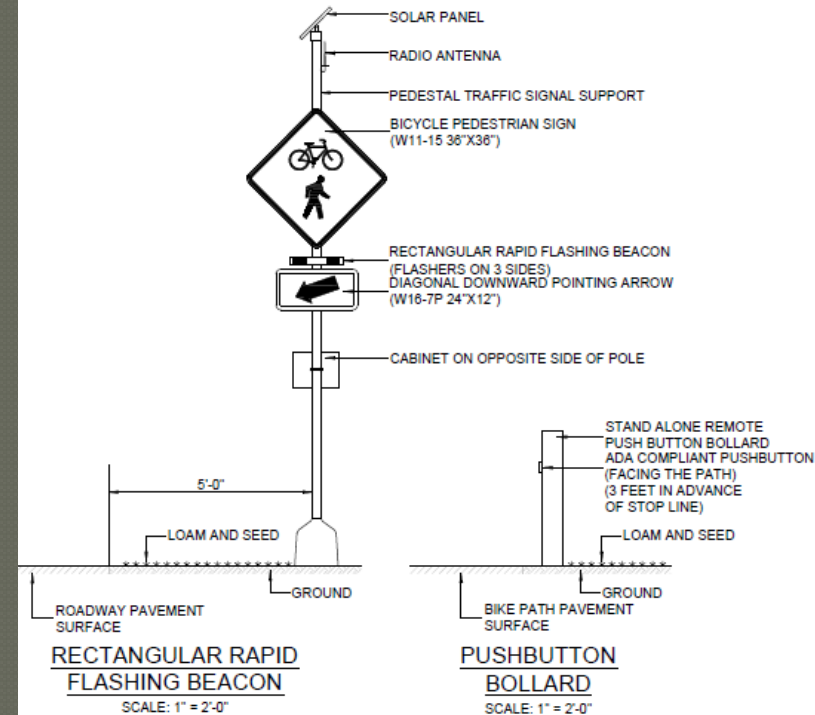
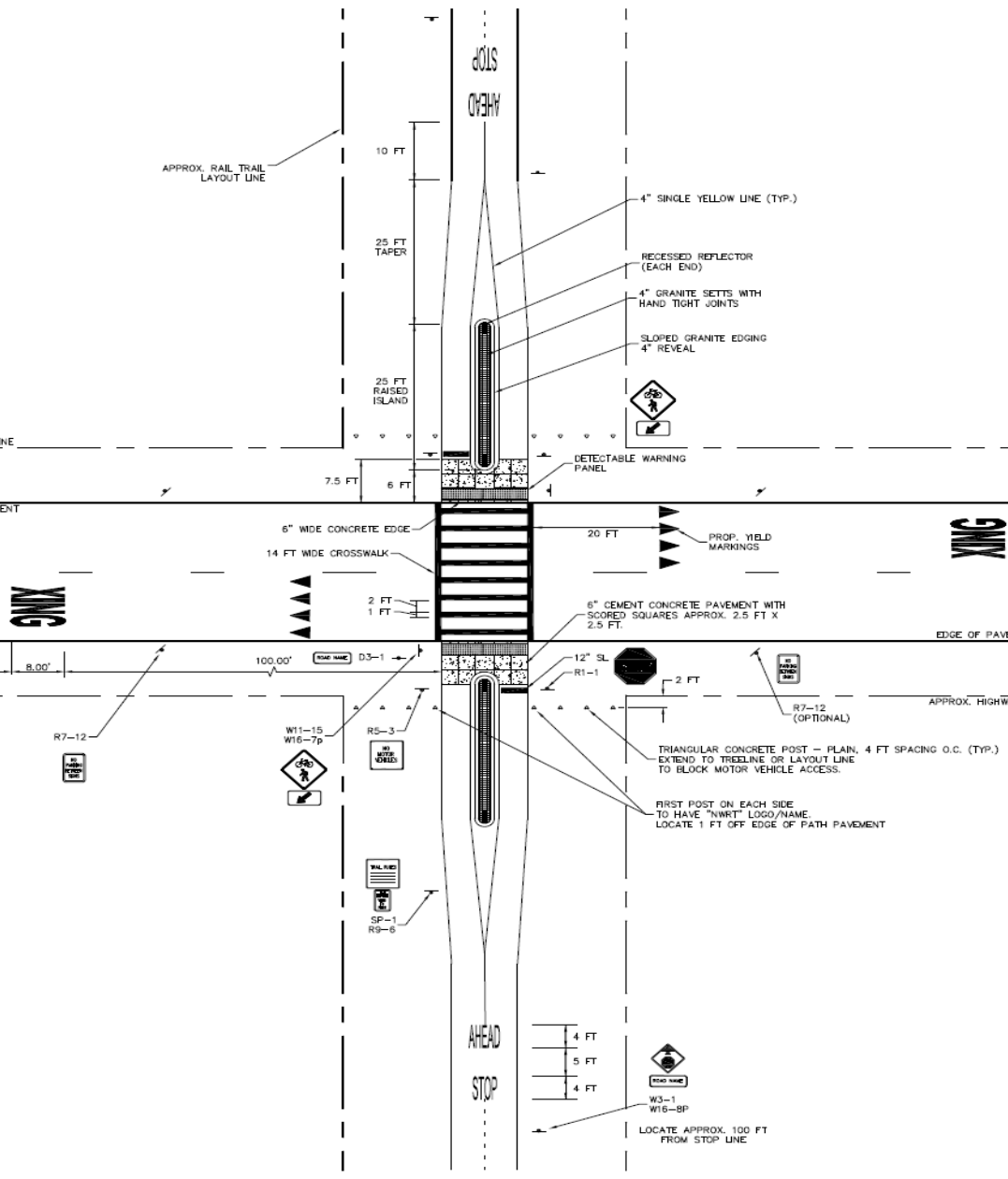








MCRT – Wayside– Typical road crossing



SOUTH MAPLE STREET CROSSING DETAIL

NOTE:

1. STAND-ALONE BOLLARD AND RECTANGULAR RAPID FLASH BEACON SHALL BE INSTALLED ON BOTH SIDES OF THE INTERSECTION AT SOUTH MAPLE STREET.
2. THE ACTIVATION LENGTH OF THE FLASHING LIGHTS SHOULD BE PROGRAMMED AS 13 SECONDS BASED ON THE MUTCD PROCEDURE.
3. PUSHBUTTON BOLLARDS SHALL BE INSTALLED AT 3 FEET IN ADVANCE OF STOP LINE AND WITHIN 10 INCHES OF THE EDGE OF PAVEMENT.
4. RRFBS SHALL BE INSTALLED AT 5 FEET TO THE EDGE OF ROADWAY AND 4 FEET TO THE EDGE OF RAIL TRAIL.



M
C
R
T

dcr



SECTION 09050 - COMMUNICATIONS - TELEPHONE



DCR Environmental Assessments and Permitting

- DCR conducted a Phase One Environmental Site Assessment of the entire corridor in 2009
 - Including a soil sample program
- DCR submitted an Expanded Environmental Notification Form (EENF) to MEPA 2013
- DCR received a waiver from an EIR 2014
- DCR seeks to work in partnership with municipalities on Wetland and Historic permitting

Infrastructure

Project Wide:

- Bridges

- 10 Existing Bridges
- 4 Missing Bridges

- 5 Existing Underpasses

- 4 filled underpasses
- As many as 69 culverts and cattle passes

Sudbury Extent:

- 2 Bridges (Hop Brook)
- 6 At-grade crossings
- 1 Filled underpass
- 15 Culverts and Cattle Passes

Sudbury



Sudbury



Sudbury



Sudbury

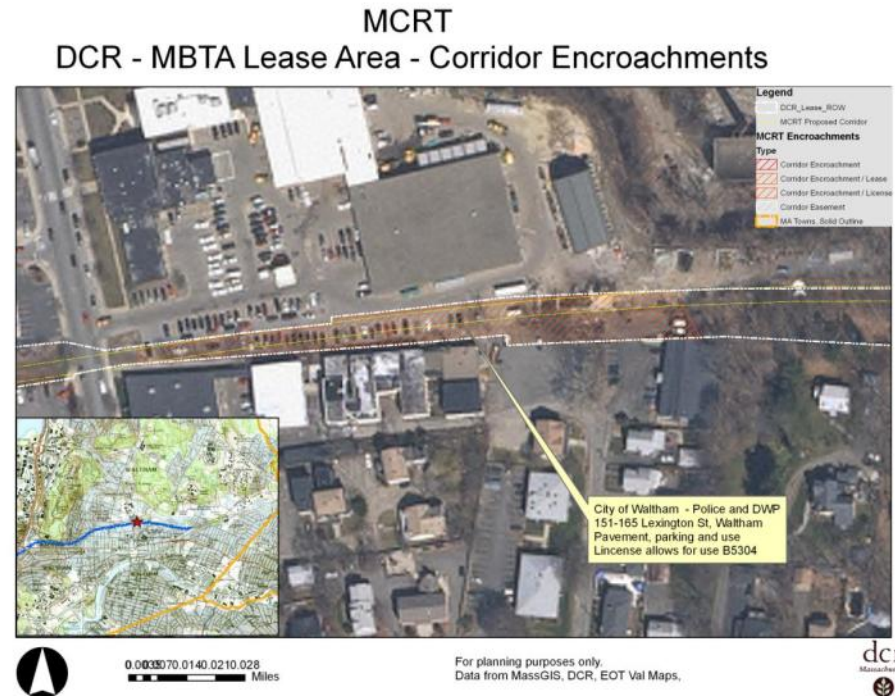


Facing N

Sudbury



DCR has identified licenses and potential encroachments in the corridor and is working to address them



Preliminary Cost Estimates

- Sudbury 4.6 miles
- Crossings at Dutton Road, Peakham Road, Horse Pond Road, Union Avenue, Boston Post Road, Landham Road
- Conceptual Cost Estimate \$5.6 million
- Based of prices from similar MassDOT / DCR projects

Next Steps

- ◉ Working to set up stakeholder meeting with communities
- ◉ Need to advocate and identify funds for design, permitting and construction
- ◉ Initiate wetland and historic permitting with municipalities
- ◉ Need to refine bridge and cost assessments