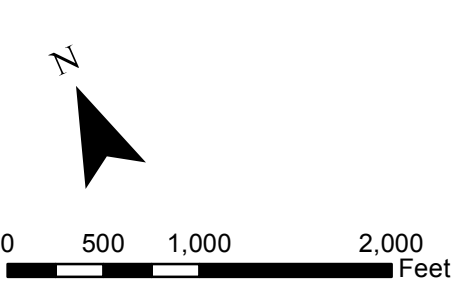




Source: BING 2009

Vanasse Hangen Brustlin, Inc.

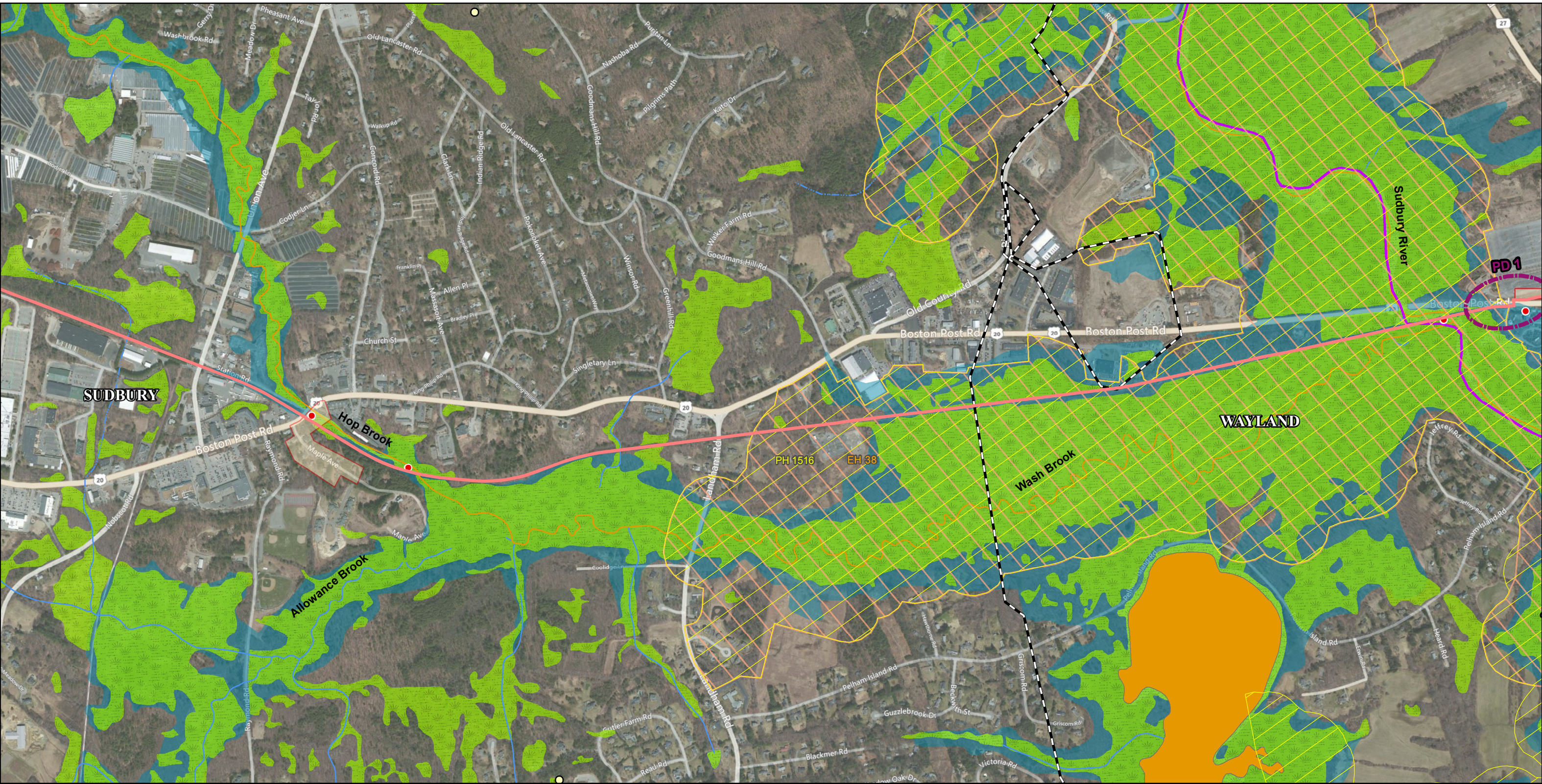


- | | | |
|--|------------------------------------|---------------------|
| Mass Central Rail Trail Alignment | Historic Sites | DEP Waterway |
| Town Boundaries | Historic Districts (Approx. Limit) | DEP Wetlands |
| NHEP Priority Habitats of Rare Species | DEP Impaired Waterbodies | DEP Open Water |
| NHEP Estimated Habitats of Rare Wildlife | Wild and Scenic River | 100-Year Floodplain |
| Certified Vernal Pools | DEP Impaired Waters | Potential Deviation |

Mass Central Rail Trail
Berlin to Waltham, Massachusetts

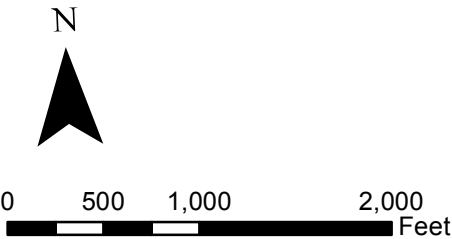
Environmental Notification Form
Project Alignment and Constraints
July 2013

Figure 5



Source: BING 2009

Vanasse Hangen Brustlin, Inc.



- | | | |
|--|------------------------------------|---------------------|
| Mass Central Rail Trail Alignment | Historic Sites | DEP Waterway |
| Town Boundaries | Historic Districts (Approx. Limit) | DEP Wetlands |
| NHEP Priority Habitats of Rare Species | DEP Impaired Waterbodies | DEP Open Water |
| NHEP Estimated Habitats of Rare Wildlife | Wild and Scenic River | 100-Year Floodplain |
| Certified Vernal Pools | DEP Impaired Waters | Potential Deviation |

Mass Central Rail Trail
Berlin to Waltham, Massachusetts

Environmental Notification Form
Project Alignment and Constraints
July 2013

Figure 6