



September 6, 2022

PRINCIPALS

Mr. Adam Duchesneau
Sudbury Planning Department
275 Old Lancaster Road
Sudbury, MA 01776

**Subject: Sudbury-Hudson Transmission Reliability and Massachusetts Central Rail Trail Project (SWMP #20-07) Issued 01/27/2021
Notification of Minor Change and Request for Administrative Approval**

Dear Mr. Duchesneau and Sudbury Planning Board Members:

On behalf of NSTAR d/b/a Eversource Energy ("Eversource") and the Massachusetts Department of Conservation and Recreation ("DCR"), Epsilon Associates, Inc. ("Epsilon") is submitting this letter and supporting documentation to provide the Planning Board with notification of a minor change to the proposed Project that was approved in the referenced Stormwater Management Permit ("SWMP") and to request administrative review and approval of this minor change. According to Section III. Condition A, any change to the plans approved in the SWMP shall require notice to the Board for a determination whether the change is significant enough to require a new or amended SWMP.

As background, Eversource and DCR recently appeared before the Sudbury Historic District Commission to obtain a Certificate of Appropriateness (COA) for proposed work within the George Pitts Tavern Historic District. The COA issued on 08/04/22 requires that the Project remove and reset (or retain if possible) existing rail tracks in front of the Boston & Maine Railroad Section Tool House, located just east of Boston Post Road (Route 20). To accomplish this, the Project alignment (i.e., the proposed limit of work) has been adjusted southward at this location. The proposed change is to approximately 160 linear feet of the rail trail alignment and associated grading and results in a slight increase of 847 square feet to the overall Project footprint. There are no changes necessary to the previously proposed location of the underground electrical transmission line.

The 160-foot section of realigned bike path does not result in an increase to the approved impervious surfaces from the Project and because it occurs within only 160 feet of the path, the change amounts to a *de minimis* change in stormwater flows. With the minor realignment of 160 feet of the rail trail, stormwater from this section will be directed southward between stations 712+00 and 713+50. This takes advantage of an existing low

Theodore A Barten, PE
Margaret B Briggs
Dale T Raczynski, PE
Cindy Schlessinger
Lester B Smith, Jr
Robert D O'Neal, CCM, INCE
Michael D Howard, PWS
Douglas J Kelleher
AJ Jablonowski, PE
Stephen H Slocomb, PE
David E Hewett, LEED AP
Dwight R Dunk, LPD
David C Klinch, PWS, PMP
Maria B Hartnett
Richard M Lampeter, INCE
Geoff Starsiak, LEED AP BD+C
Marc Bergeron, PWS, CWS

ASSOCIATES

Alyssa Jacobs, PWS
Holly Carlson Johnston
Brian Lever
Dorothy K. Buckoski, PE

3 Mill & Main Place, Suite 250
Maynard, MA 01754
www.epsilonassociates.com

978 897 7100
FAX 978 897 0099

area south of the rail bed, and ultimately results in a longer path of travel for stormwater, providing increased opportunity for infiltration and recharge before reaching the culvert at station 713+63.

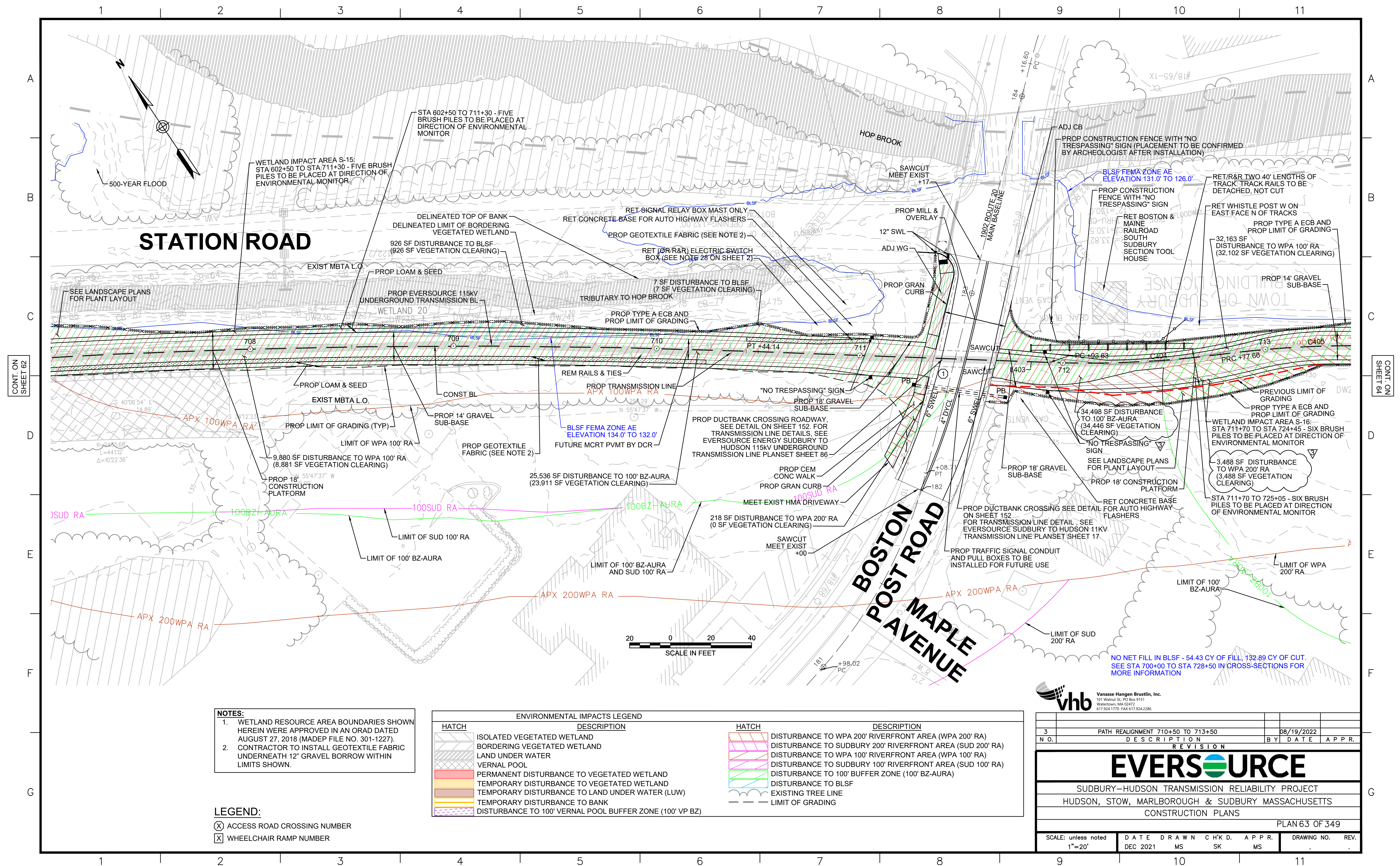
Attached please find three plan sheets showing the proposed minor change that upon administrative approval would replace the corresponding sheets in the plan set previously approved by the Board.

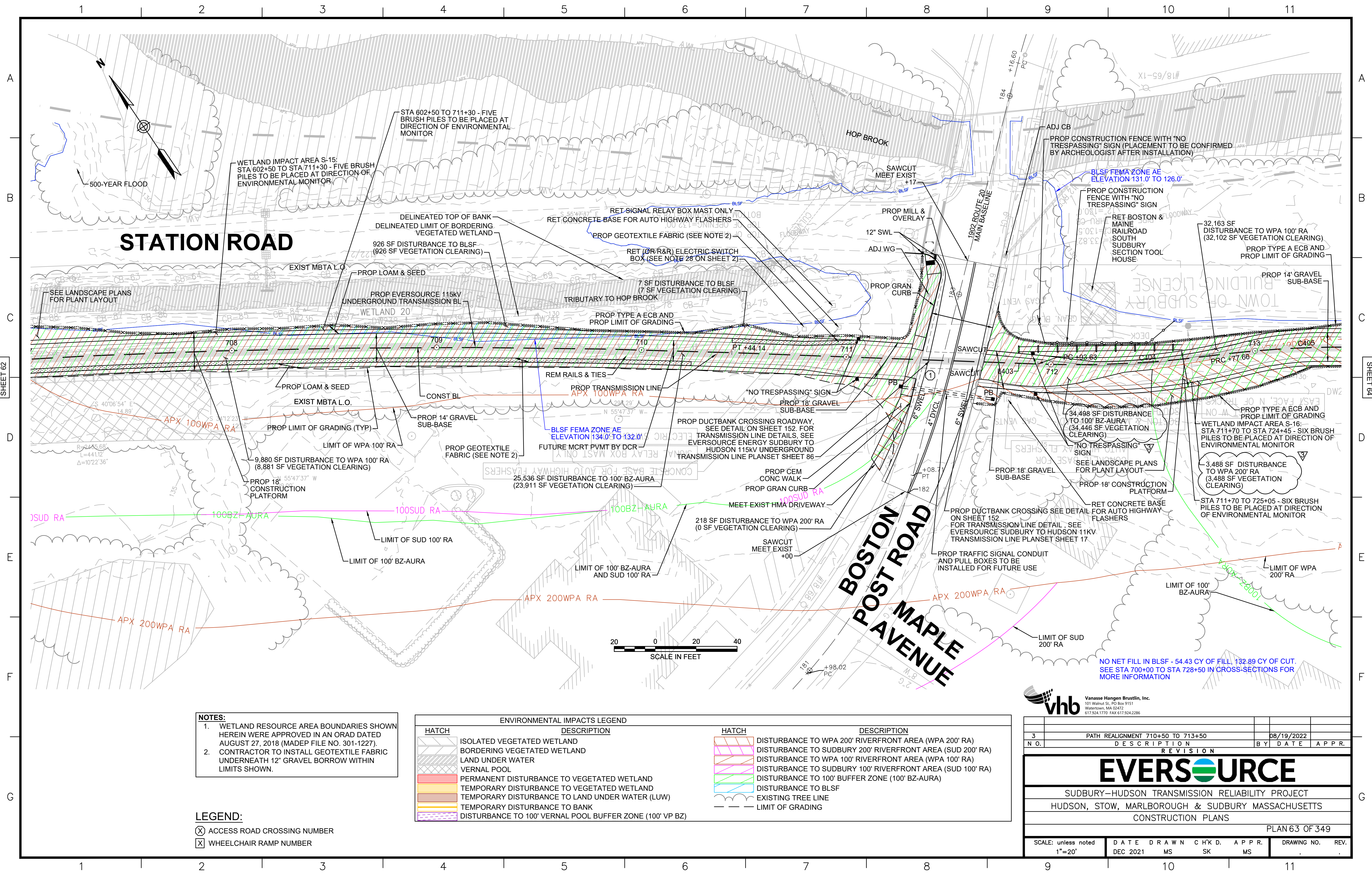
We respectfully request that the Board confirm that this minor change is insignificant and can proceed as an administrative amendment of the SWMP. Please do not hesitate to contact me at 508-212-0420 or via email at mbergeron@epsilonassociates.com if you have any questions related to this request.

Sincerely,

A handwritten signature in black ink, reading "Marc Bergeron". The signature is fluid and cursive, with the first name "Marc" and last name "Bergeron" clearly distinguishable.

Marc Bergeron, PWS
Project Manager/Principal





NOTES:

1. WETLAND RESOURCE AREA BOUNDARIES SHOWN HEREIN WERE APPROVED IN AN ORAD DATED AUGUST 27, 2018 (MADEP FILE NO. 301-1227).
2. CONTRACTOR TO INSTALL GEOTEXTILE FABRIC UNDERNEATH 12" GRAVEL BORROW WITHIN LIMITS SHOWN.

LEGEND:

⊗ ACCESS ROAD CROSSING NUMBER

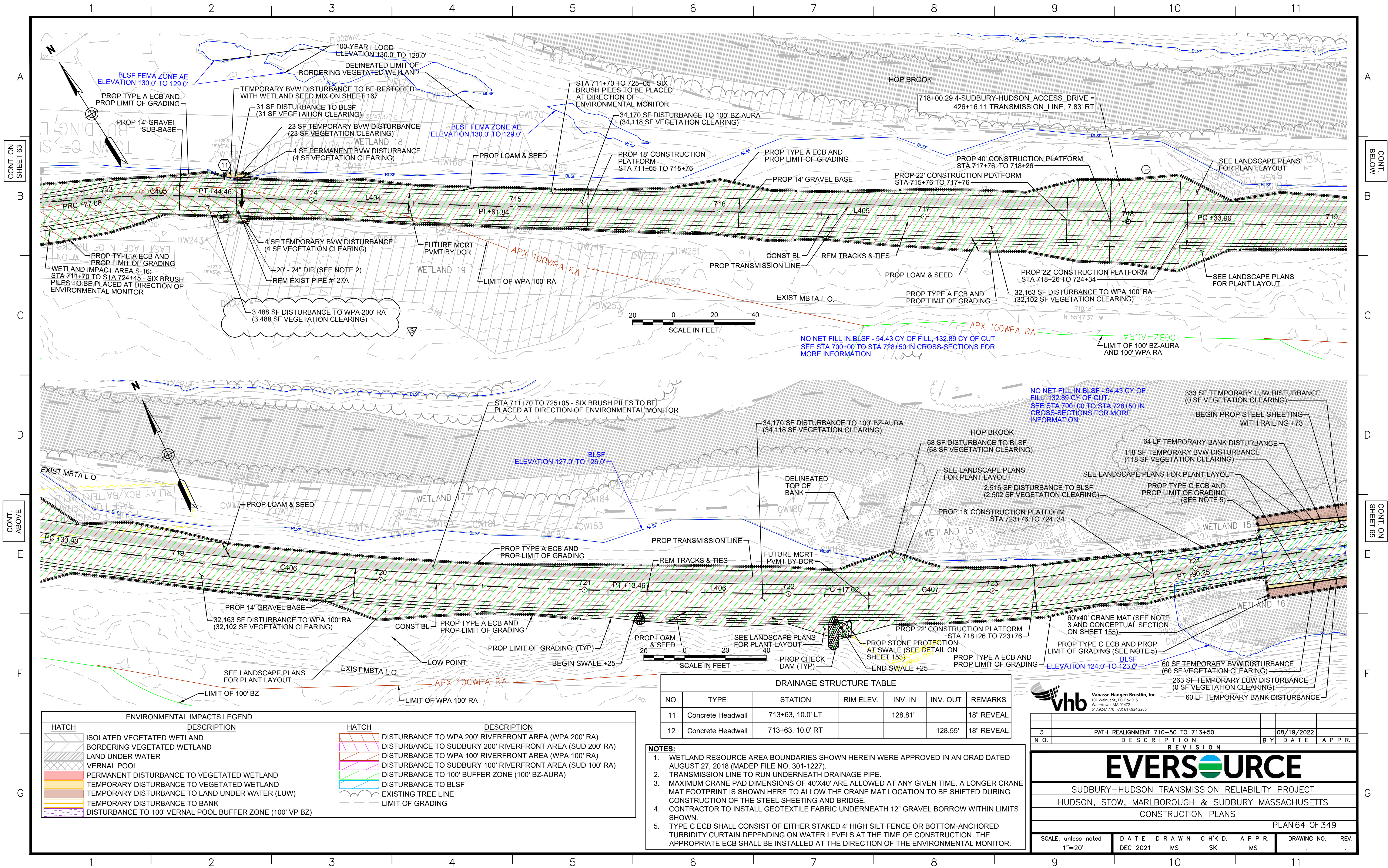
⊗ WHEELCHAIR RAMP NUMBER

ENVIRONMENTAL IMPACTS LEGEND	
HATCH	DESCRIPTION
	ISOLATED VEGETATED WETLAND
	BORDERING VEGETATED WETLAND
	LAND UNDER WATER
	VERNAL POOL
	PERMANENT DISTURBANCE TO VEGETATED WETLAND
	TEMPORARY DISTURBANCE TO VEGETATED WETLAND
	TEMPORARY DISTURBANCE TO LAND UNDER WATER (LUW)
	TEMPORARY DISTURBANCE TO BANK
	DISTURBANCE TO 100' VERNAL POOL BUFFER ZONE (100' VP BZ)
	DISTURBANCE TO WPA 200' RIVERFRONT AREA (WPA 200' RA)
	DISTURBANCE TO SUDBURY 200' RIVERFRONT AREA (SUD 200' RA)
	DISTURBANCE TO WPA 100' RIVERFRONT AREA (WPA 100' RA)
	DISTURBANCE TO SUDBURY 100' RIVERFRONT AREA (SUD 100' RA)
	DISTURBANCE TO 100' BUFFER ZONE (100' BZ-AURA)
	DISTURBANCE TO BLSF
	EXISTING TREE LINE
	LIMIT OF GRADING

Vannase Hangen Brustlin, Inc.
101 Walnut St., PO Box 9151
Watertown, MA 02472
617-254-1770 FAX 617-254-2296

3	PATH REALIGNMENT 710+50 TO 713+50	08/19/2022		
N.O.	DESCRIPTION	BY	DATE	APP.R.
REVISION				
EVERSOURCE				
SUDBURY-HUDSON TRANSMISSION RELIABILITY PROJECT				
HUDSON, STOW, MARLBOROUGH & SUDBURY MASSACHUSETTS				
CONSTRUCTION PLANS				
PLAN 63 OF 349				
SCALE: unless noted 1"=20'	DATE DEC 2021	DRAWN MS	CHK'D. SK	APP.R. MS
DRAWING NO.		REV.		

NO NET FILL IN BLSF - 54.43 CY OF FILL, 132.89 CY OF CUT.
SEE STA 700+00 TO STA 728+50 IN CROSS-SECTIONS FOR MORE INFORMATION



ENVIRONMENTAL IMPACTS LEGEND	
HATCH	DESCRIPTION
[Hatch]	ISOLATED VEGETATED WETLAND
[Hatch]	BORDERING VEGETATED WETLAND
[Hatch]	LAND UNDER WATER
[Hatch]	VERNAL POOL
[Hatch]	PERMANENT DISTURBANCE TO VEGETATED WETLAND
[Hatch]	TEMPORARY DISTURBANCE TO VEGETATED WETLAND
[Hatch]	TEMPORARY DISTURBANCE TO LAND UNDER WATER (LUW)
[Hatch]	TEMPORARY DISTURBANCE TO BANK
[Hatch]	DISTURBANCE TO 100' VERNAL POOL BUFFER ZONE (100' VP BZ)

DESCRIPTION	
[Hatch]	DISTURBANCE TO WPA 200' RIVERFRONT AREA (WPA 200' RA)
[Hatch]	DISTURBANCE TO SUDBURY 200' RIVERFRONT AREA (SUD 200' RA)
[Hatch]	DISTURBANCE TO WPA 100' RIVERFRONT AREA (WPA 100' RA)
[Hatch]	DISTURBANCE TO SUDBURY 100' RIVERFRONT AREA (SUD 100' RA)
[Hatch]	DISTURBANCE TO 100' BUFFER ZONE (100' BZ-AURA)
[Hatch]	DISTURBANCE TO BLSF
[Hatch]	EXISTING TREE LINE
[Hatch]	LIMIT OF GRADING

DRAINAGE STRUCTURE TABLE						
NO.	TYPE	STATION	RIM ELEV.	INV. IN	INV. OUT	REMARKS
11	Concrete Headwall	713+63, 10.0' LT		128.81'		18" REVEAL
12	Concrete Headwall	713+63, 10.0' RT			128.55'	18" REVEAL

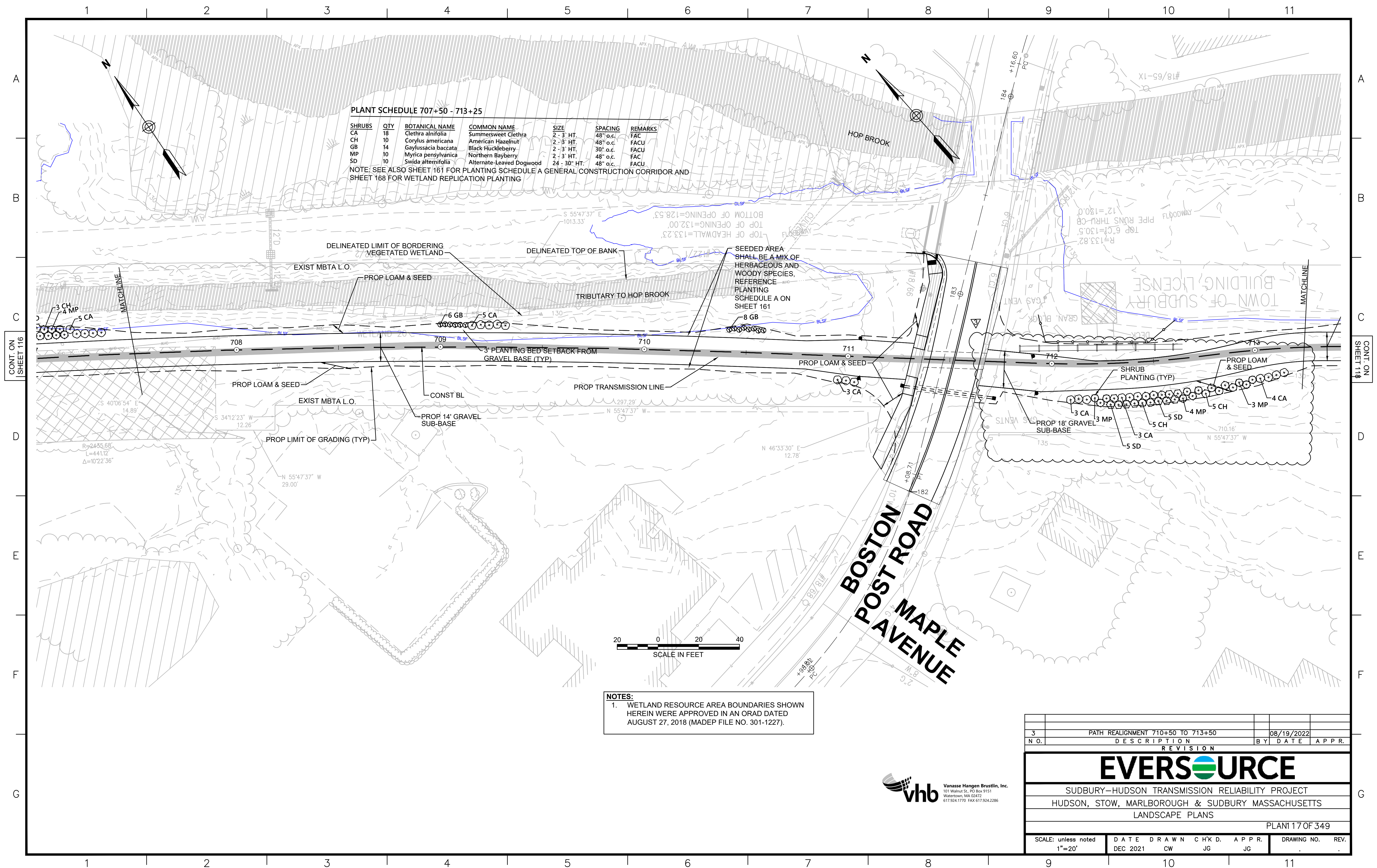
- NOTES:**
1. WETLAND RESOURCE AREA BOUNDARIES SHOWN HEREIN WERE APPROVED IN AN ORAD DATED AUGUST 27, 2018 (MADEP FILE NO. 301-1227).
 2. TRANSMISSION LINE TO RUN UNDERNEATH DRAINAGE PIPE.
 3. MAXIMUM CRANE PAD DIMENSIONS OF 40'x40' ARE ALLOWED AT ANY GIVEN TIME. A LONGER CRANE MAT FOOTPRINT IS SHOWN HERE TO ALLOW THE CRANE MAT LOCATION TO BE SHIFTED DURING CONSTRUCTION OF THE STEEL SHEETING AND BRIDGE.
 4. CONTRACTOR TO INSTALL GEOTEXTILE FABRIC UNDERNEATH 12" GRAVEL BORROW WITHIN LIMITS SHOWN.
 5. TYPE C ECB SHALL CONSIST OF EITHER STAKED 4' HIGH SILT FENCE OR BOTTOM-ANCHORED TURBIDITY CURTAIN DEPENDING ON WATER LEVELS AT THE TIME OF CONSTRUCTION. THE APPROPRIATE ECB SHALL BE INSTALLED AT THE DIRECTION OF THE ENVIRONMENTAL MONITOR.

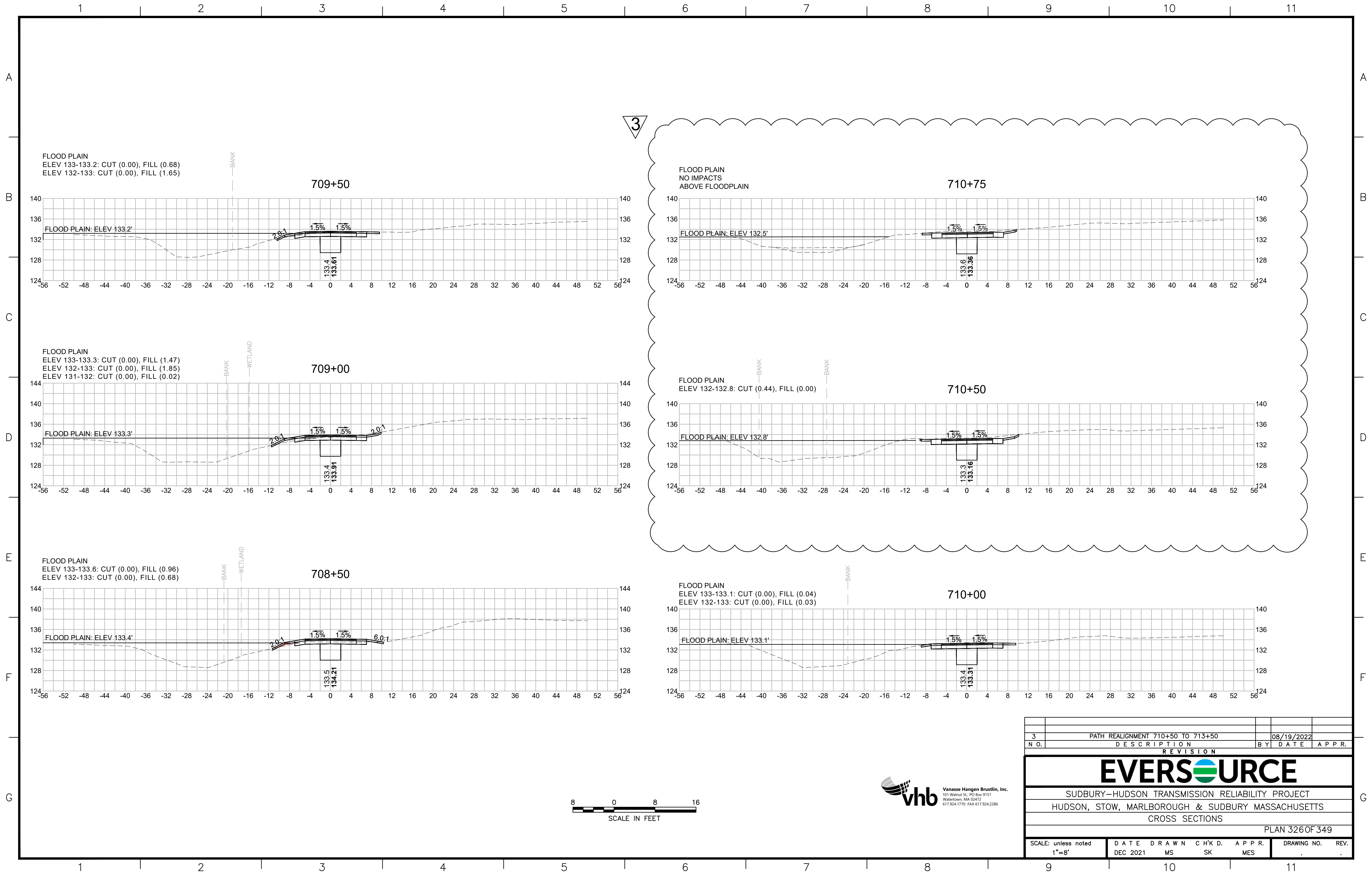
Vanasse Hangen Brustlin, Inc.
101 Walnut St., PO Box 9151
Watertown, MA 02472
617.254.1770 FAX 617.254.2296

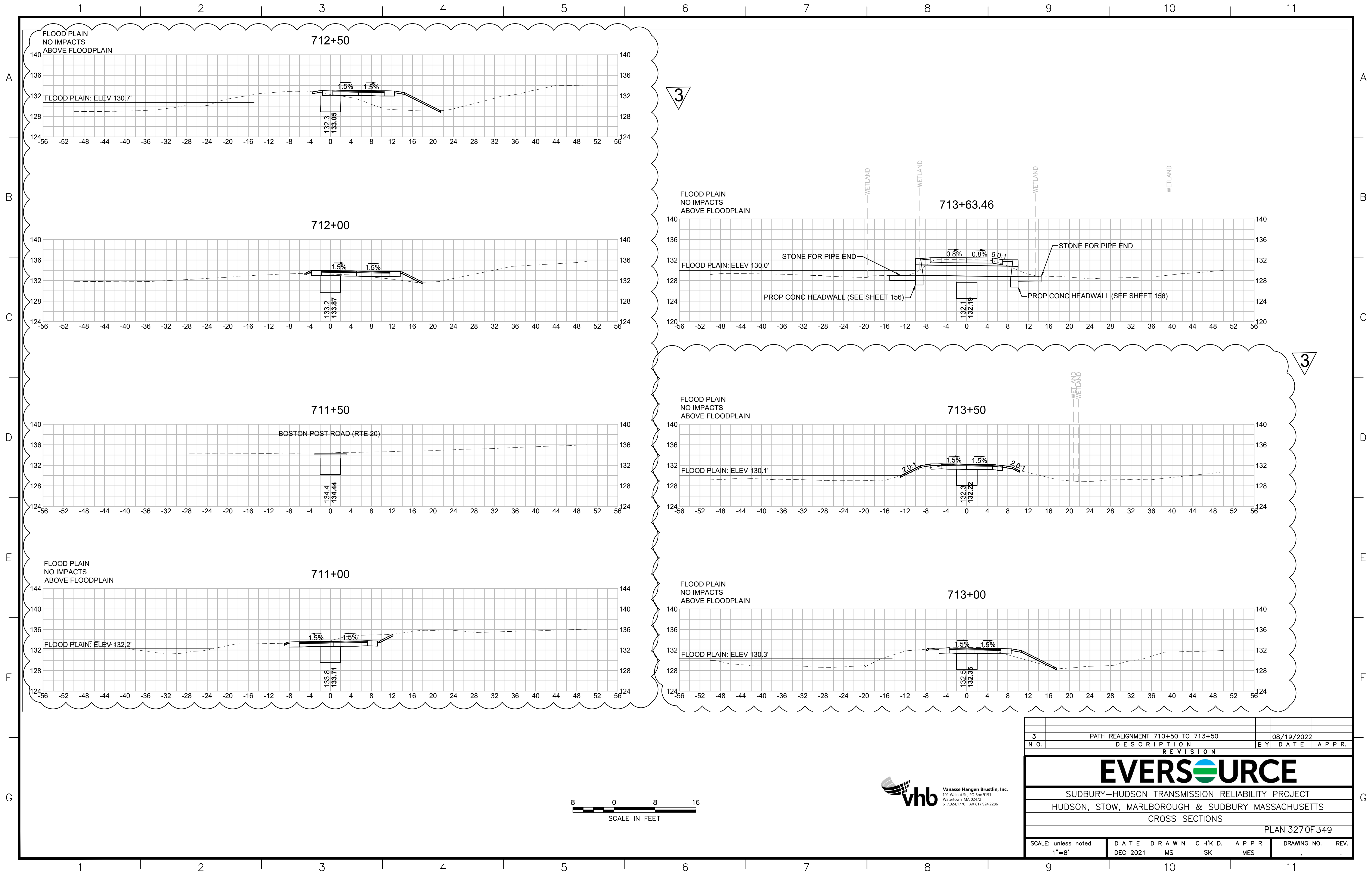
3	PATH REALIGNMENT 710+50 TO 713+50	08/19/2022		
NO.	DESCRIPTION	BY	DATE	APPR.
REVISION				

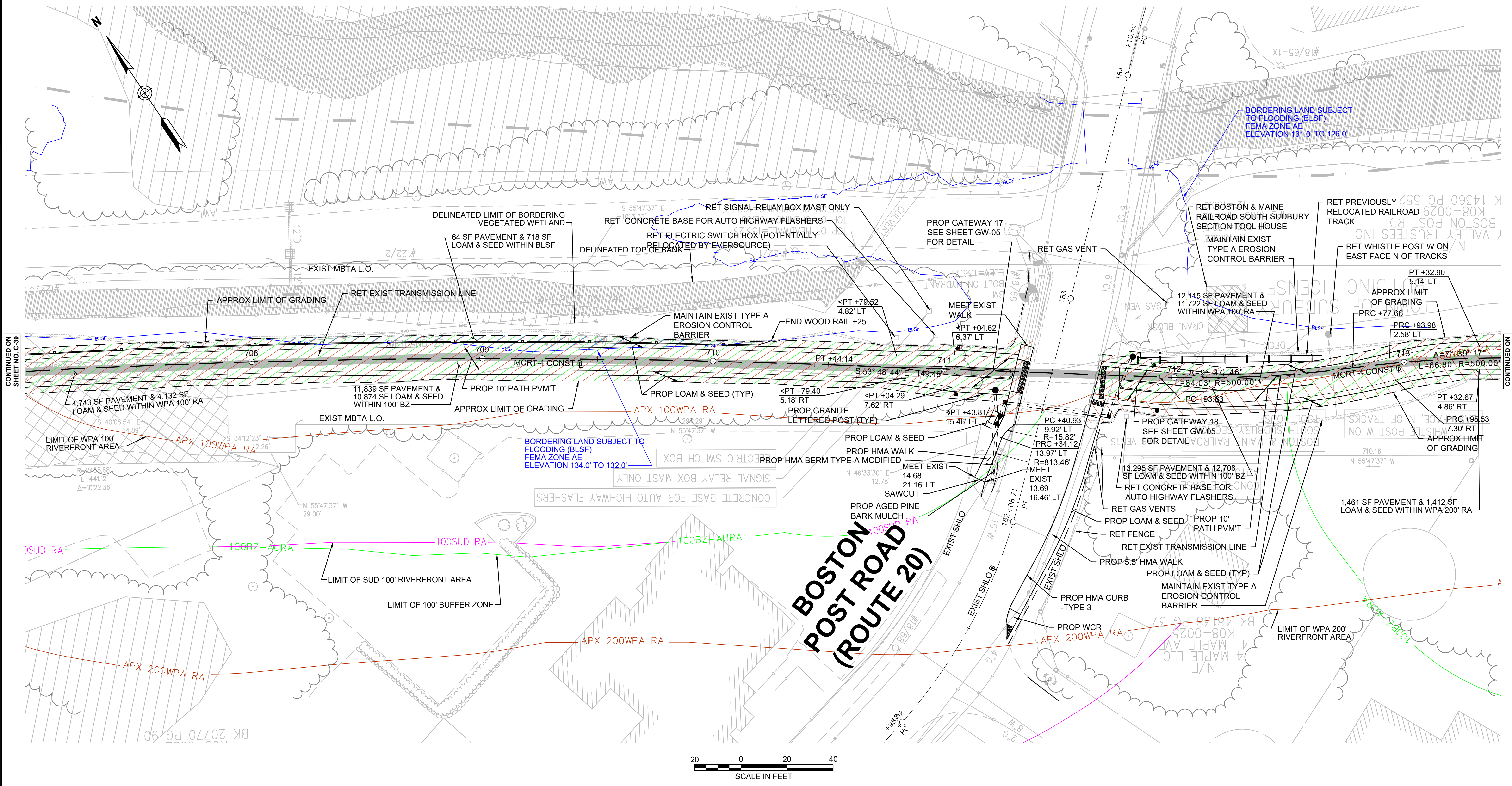
SUDBURY-HUDSON TRANSMISSION RELIABILITY PROJECT
HUDSON, STOW, MARLBOROUGH & SUDBURY MASSACHUSETTS
CONSTRUCTION PLANS
PLAN 64 OF 349

SCALE: unless noted 1"=20'	DATE DEC 2021	DRAWN MS	CHK'D SK	APPR. MS	DRAWING NO.	REV.
-------------------------------	------------------	-------------	-------------	-------------	-------------	------









NOTE:
1. WETLAND RESOURCE AREA BOUNDARIES SHOWN HEREIN WERE APPROVED IN AN ORAD DATED AUGUST 27, 2018 (MADEP FILE NO. 301-1227).

ENVIRONMENTAL IMPACTS LEGEND	
HATCH	DESCRIPTION
	ISOLATED VEGETATED WETLAND
	BORDERING VEGETATED WETLAND
	LAND UNDER WATER
	VERNAL POOL
	PERMANENT DISTURBANCE TO VEGETATED WETLAND
	DISTURBANCE TO 100' VERNAL POOL BUFFER ZONE (100' VP BZ)
	DISTURBANCE TO WPA 200' RIVERFRONT AREA (WPA 200' RA)
	DISTURBANCE TO SUDBURY 200' RIVERFRONT AREA (SUD 200' RA)
	DISTURBANCE TO WPA 100' RIVERFRONT AREA (WPA 100' RA)
	DISTURBANCE TO SUDBURY 100' RIVERFRONT AREA (SUD 100' RA)
	DISTURBANCE TO 100' BUFFER ZONE (100' BZ-AURA)
	DISTURBANCE TO BLSF
	EXISTING TREE LINE
	LIMIT OF GRADING

REV.	DATE	DESCRIPTION	BY

Transportation Land Development
Environmental Services
101 Walnut St., P.O. Box 9151
Watertown, MA 02472
617 924 1770 FAX 617 924 2286

**COMMONWEALTH OF MASSACHUSETTS
DEPARTMENT OF CONSERVATION AND RECREATION
DIVISION OF PLANNING AND ENGINEERING**

MASS CENTRAL RAIL TRAIL - WAYSIDE

**MASS CENTRAL RAIL TRAIL
HUDSON, STOW, MARLBOROUGH & SUDBURY, MA**

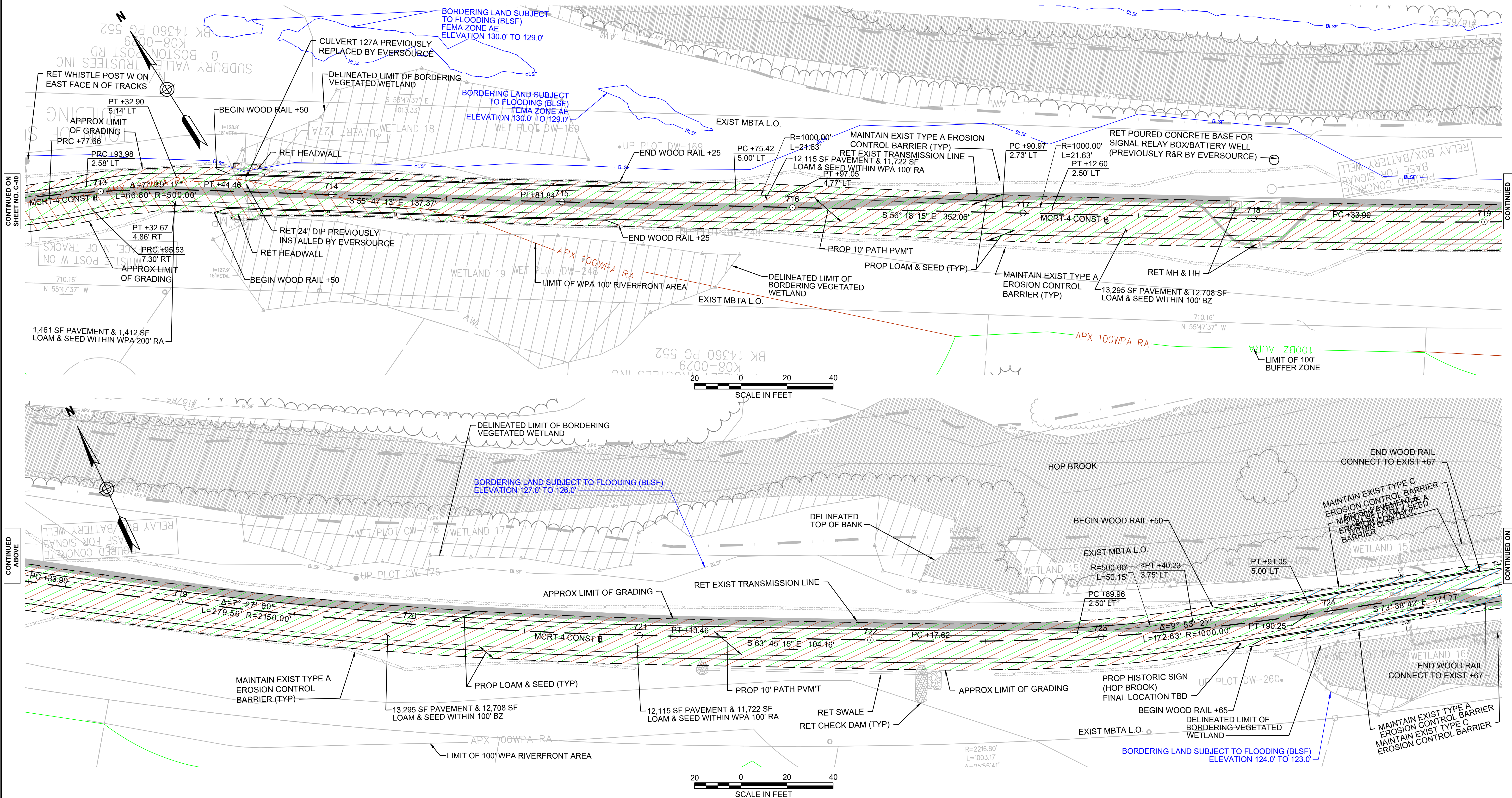
CONSTRUCTION PLANS

DESIGNER: JCR
CHECKED: SHK
DRAWN: JCR
CHECKED: TAL

CONT: P19-3295-D1A
ACC: XXXXXXXX

SCALE: 1" = 20'-0"
DATE: FEB 2021

SHEET NO.
C-40
40 OF 46



NOTE:
1. WETLAND RESOURCE AREA BOUNDARIES SHOWN HEREIN WERE APPROVED IN AN ORAD DATED AUGUST 27, 2018 (MADEP FILE NO. 301-1227).

ENVIRONMENTAL IMPACTS LEGEND	
HATCH	DESCRIPTION
	ISOLATED VEGETATED WETLAND
	BORDERING VEGETATED WETLAND
	LAND UNDER WATER
	VERNAL POOL
	PERMANENT DISTURBANCE TO VEGETATED WETLAND
	DISTURBANCE TO 100' VERNAL POOL BUFFER ZONE (100' VP BZ)

HATCH	DESCRIPTION
	DISTURBANCE TO WPA 200' RIVERFRONT AREA (WPA 200' RA)
	DISTURBANCE TO SUDBURY 200' RIVERFRONT AREA (SUD 200' RA)
	DISTURBANCE TO WPA 100' RIVERFRONT AREA (WPA 100' RA)
	DISTURBANCE TO SUDBURY 100' RIVERFRONT AREA (SUD 100' RA)
	DISTURBANCE TO 100' BUFFER ZONE (100' BZ-AURA)
	DISTURBANCE TO BLSF
	EXISTING TREE LINE
	LIMIT OF GRADING

REV.	DATE	DESCRIPTION	BY

Transportation Land Development
Environmental Services
101 Walnut St., P.O. Box 9151
Watertown, MA 02472
617 924 1770 FAX 617 924 2286

**COMMONWEALTH OF MASSACHUSETTS
DEPARTMENT OF CONSERVATION AND RECREATION
DIVISION OF PLANNING AND ENGINEERING**

MASS CENTRAL RAIL TRAIL - WAYSIDE

**MASS CENTRAL RAIL TRAIL
HUDSON, STOW, MARLBOROUGH & SUDBURY, MA**

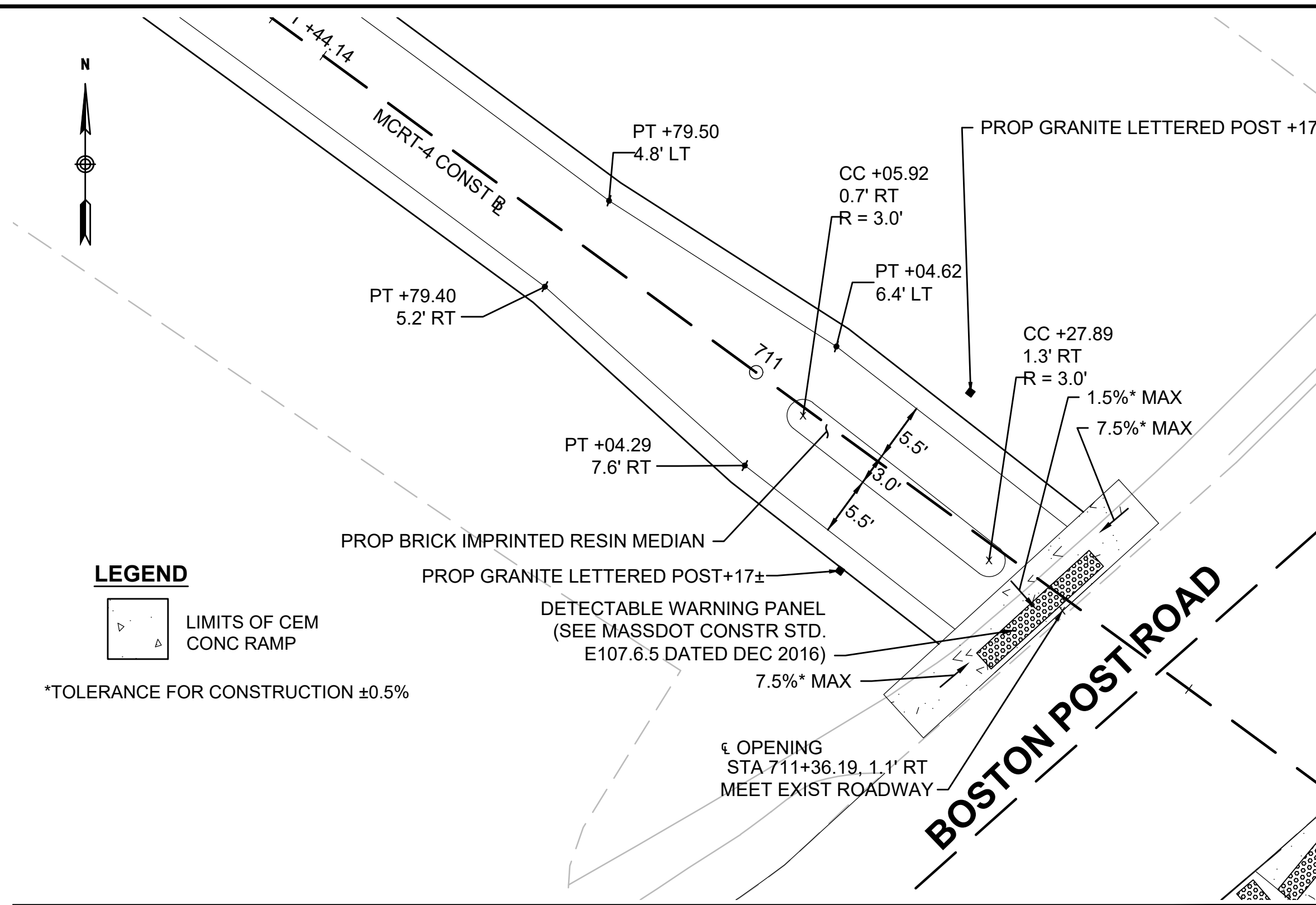
CONSTRUCTION PLANS

DESIGNER: JCR
CHECKED: SHK
DRAWN: JCR
CHECKED: TAL

CONT: P19-3295-D1A
ACC: XXXXXXXX

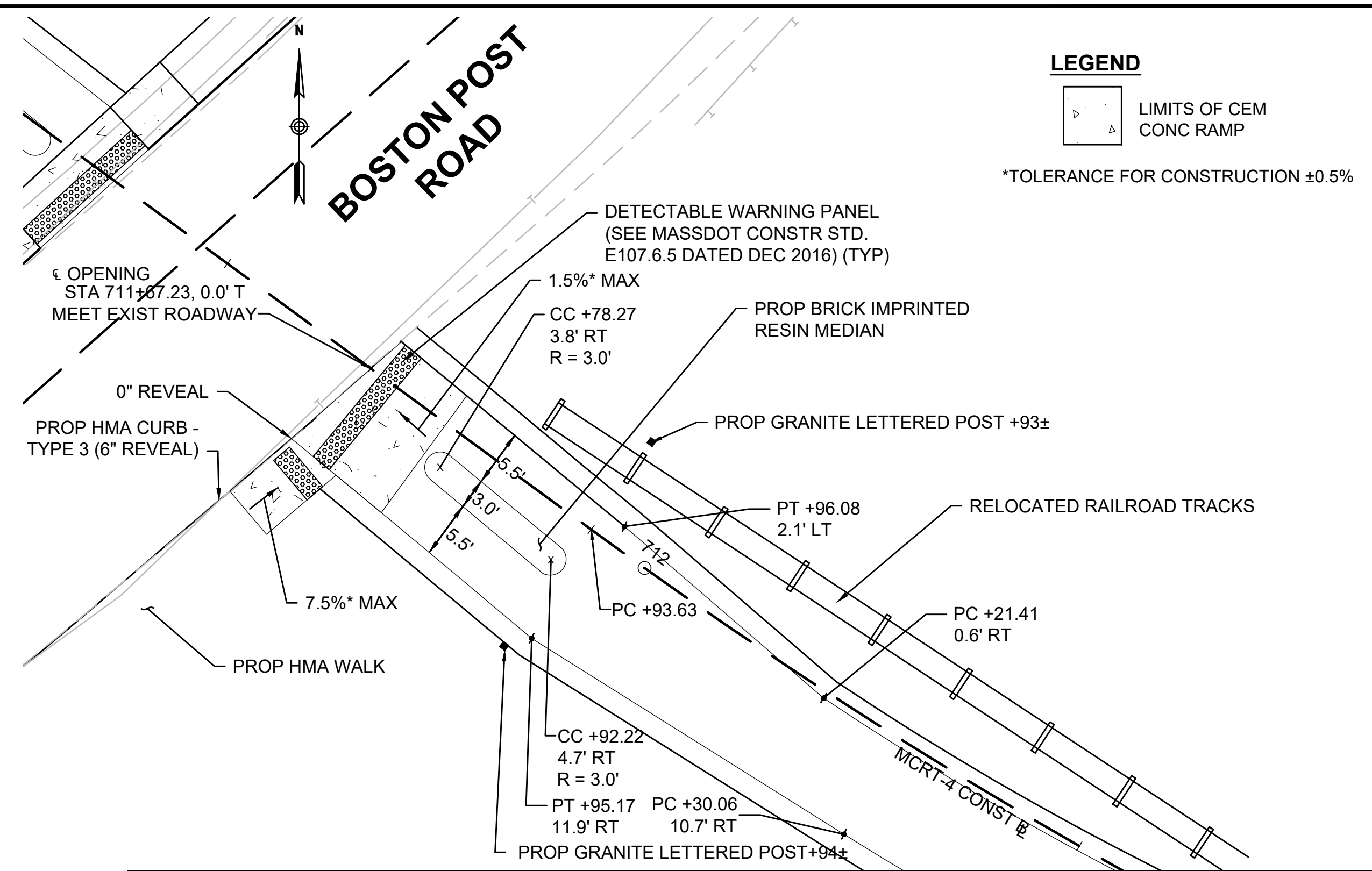
SCALE: 1" = 20'-0"
DATE: FEB 2021

SHEET NO.
C-41
41 OF 46



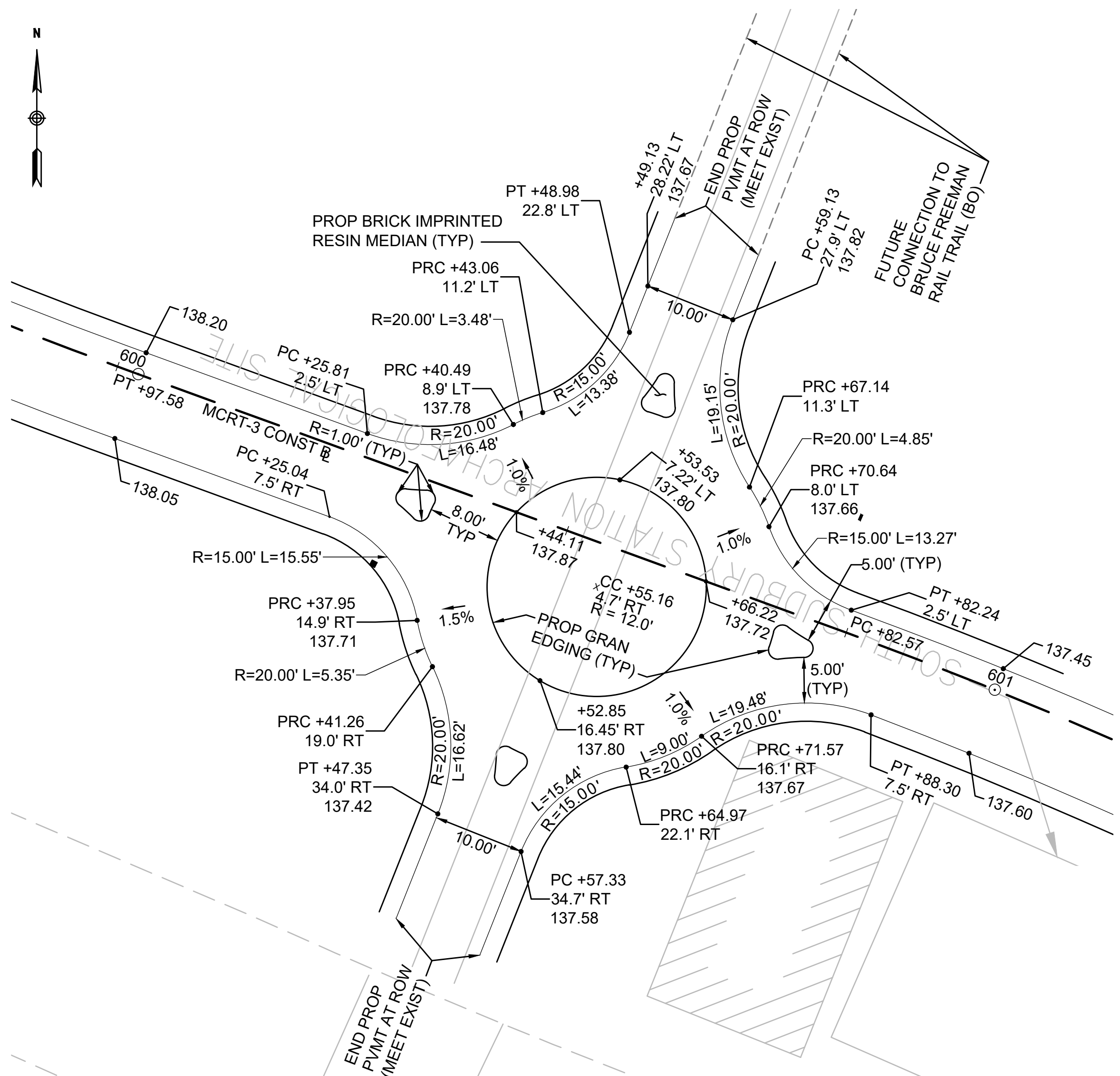
GATEWAY 17 - BOSTON POST ROAD (WEST)

SCALE: 1" = 10'



GATEWAY 18 - BOSTON POST ROAD (EAST)

SCALE: 1" = 10'



ROUNDBOUT

SCALE: 1" = 10'

REV.	DATE	DESCRIPTION	BY



Transportation Land Development
Environmental Services
101 Walnut St., P.O. Box 9151
Watertown, MA 02472
617 924 1770 FAX 617 924 2286

COMMONWEALTH OF MASSACHUSETTS DEPARTMENT OF CONSERVATION AND RECREATION DIVISION OF PLANNING AND ENGINEERING			
MASS CENTRAL RAIL TRAIL - WAYSIDE			
MASS CENTRAL RAIL TRAIL HUDSON, STOW, MARLBOROUGH & SUDBURY, MA			
DESIGNER: JCR	GATEWAY DETAILS		SHEET NO.
CHECKED: SHK	CONT: P19-3295-D1A		GW-05
DRAWN: JCR	ACC: XXXXXXXX		5 OF 5
CHECKED: TAL	DATE: FEB 2021		