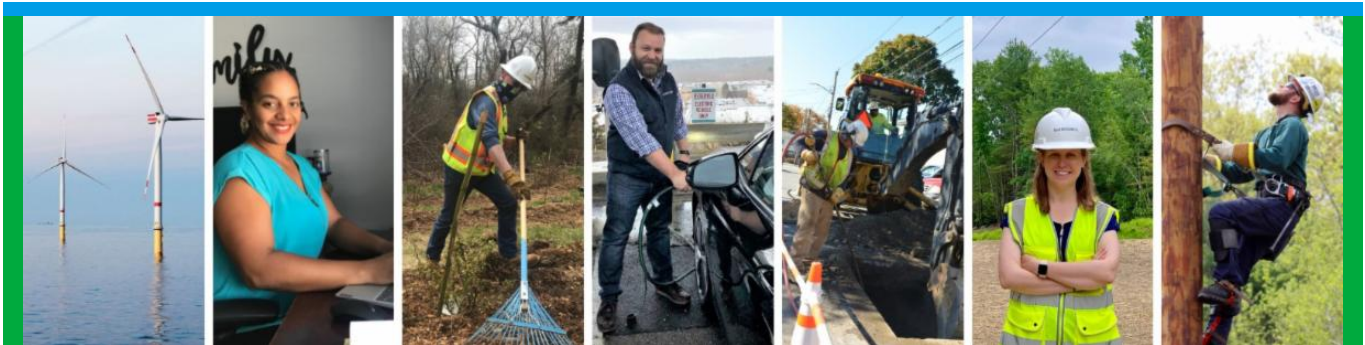


**From:** Eversource Outreach <miles.lang-kennedy@eversource.com>  
**Sent:** Wednesday, January 18, 2023 12:01 PM  
**To:** Select Board  
**Subject:** Project Update (01/18/23) Eversource 115-kV Transmission Line



[Project Website](#)



## Eversource 115-kV Transmission Project Update

Greetings!

Eversource and its contractors resumed construction on the 115-kilovolt (kV) Underground Transmission Line Project in Hudson and Sudbury. During construction, including after hours and on weekends, Eversource asks people in the area to avoid walking along and crossing the inactive Massachusetts Bay Transportation Authority (MBTA) rail corridor. Construction is not expected to interrupt electric service.

### Work Hours

Approved work hours are 7 a.m. to 6 p.m., Monday to Friday but crews are working from **7 a.m. to 3:30 p.m.** Occasional work may extend beyond the approved hours based on feedback from Town staff.

Below is an overview of the active and upcoming work zones.

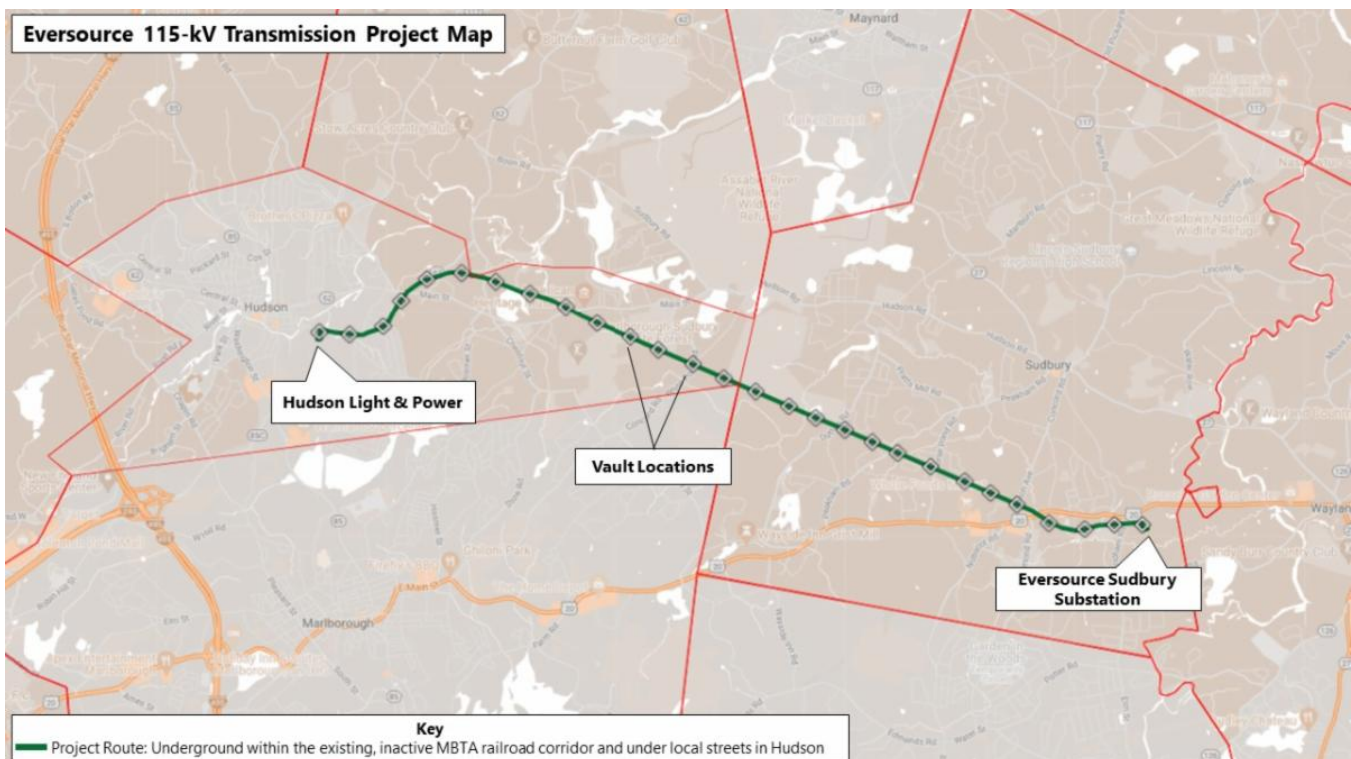
### Hudson

- **In the inactive MBTA rail corridor**, from Wilkins Street to Main Street, crews are nearly finished removing rails and ties and they will be grading the limits of work for the next several weeks.

- **Between Parmenter Road and White Pond Road in the corridor**, crews began installing MH12 (a cable vault) and will start installing MH13 (another cable vault) next week. A cable vault is an opening in an underground duct system that houses electrical equipment. The opening is large enough for a worker to enter on a ladder and is sometimes called a manhole (MH). [View the Project map](#) for more details on the locations of work crews.
- **Off Forest Avenue**, at Hudson Light & Power a crew recently installed a small hand hole that will be used to access the new transmission line. Active construction will NOT occur on Forest Avenue until Spring 2023.

## Sudbury

- **In the inactive MBTA rail corridor**, between the Sudbury Substation (163 Boston Post Road) and Bridge 127, crews are installing erosion controls and removing rails and ties. Grading of the limits of work will start in early February.
- **Between the Town line and Dutton Road in the corridor**, crews are clearing vegetation and will start removing rails and ties in the coming weeks. Grading of the limits of work will begin afterward.
- **Off Boston Post Road**, at the Eversource Sudbury Substation, G. Greene Construction is excavating and building foundations inside the Substation fence line. Additional Eversource crews will also be at the site installing structures and other electrical equipment.



## Typical Construction

Pictured is a work crew in Sudbury removing rails and ties in the inactive MBTA corridor.



## Stay Informed

Eversource is committed to being a good neighbor and doing any work with respect for you and your property. If you have questions, please contact us directly or click on one of the resources below to learn more about the project.

- Dial **1-833-836-0302** or email [ProjectInfoMa@eversource.com](mailto:ProjectInfoMa@eversource.com) with any questions or concerns.
- Visit the [website](#) for this project.
- View the [interactive project map](#).
- View information on [rail trail access](#) during construction.
- Visit the [Town of Sudbury](#) or [Town of Hudson](#) website to see additional resources.
- **Field outreach representatives** will be in touch with notices updating you on construction activities.

Did someone forward this email? If so, [sign up to receive future updates](#).

Si necesita que le traduzcan esta notificación, envíenos un correo electrónico a [ProjectInfoMa@eversource.com](mailto:ProjectInfoMa@eversource.com) y escribe “[S-H]” en el asunto.

如果您需要本通知的翻譯版本，請寄送電郵至 [ProjectInfoMa@eversource.com](mailto:ProjectInfoMa@eversource.com)，並在主題欄中輸入 “[S-H]”

如果您需要本通知的翻译版本，请发电子邮件到 [ProjectInfoMa@eversource.com](mailto:ProjectInfoMa@eversource.com)，并在主题栏中输入 “[S-H]”

# EVERSOURCE

**Address:** 247 Station Drive  
Westwood, MA 02090  
**Phone:** 1-800-793-2202



Email Us

Eversource | 247 Station Drive, Westwood, MA 02090

[Unsubscribe selectboard@sudbury.ma.us](mailto:selectboard@sudbury.ma.us)

[Update Profile](#) | [Constant Contact Data Notice](#)

Sent by miles.lang-kennedy@eversource.com powered by

