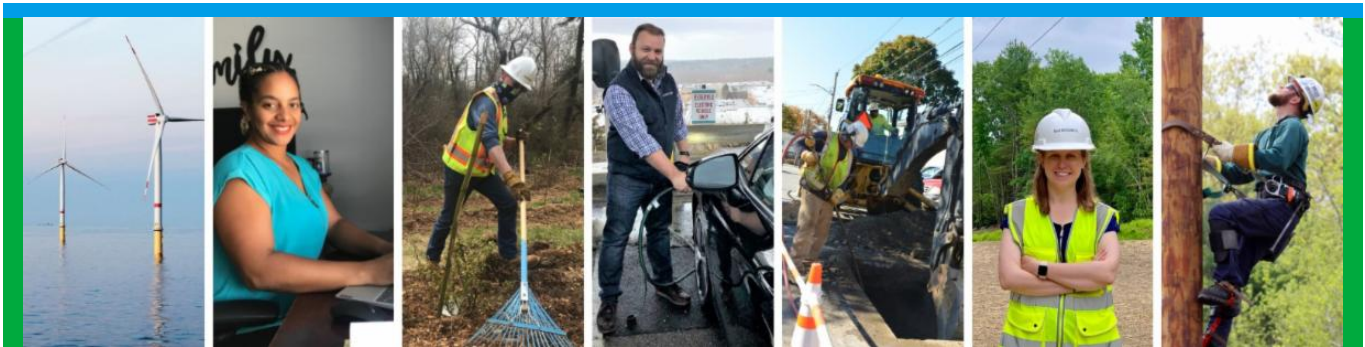


From: Eversource Outreach <miles.lang-kennedy@eversource.com>
Sent: Wednesday, February 1, 2023 10:02 AM
To: Select Board
Subject: Project Update (02/01/23) Eversource 115-kV Transmission Line



[Project Website](#)



Eversource 115-kV Transmission Project Update

Greetings!

Eversource and its contractor BOND Civil & Utility Construction and their subcontractors (ET&L Construction, M-O-N Landscaping Inc., and Moosehead LLC) resumed construction on the 115-kilovolt (kV) Underground Transmission Line Project in Hudson and Sudbury. Eversource asks people to avoid walking along and crossing the inactive Massachusetts Bay Transportation Authority (MBTA) rail corridor. Construction is not expected to interrupt electric service.

Generally, in the inactive MBTA corridor, work proceeds with vegetation clearing, followed by erosion control installation and rail/tie removal. From there, grading of the limits of work happens. After these enabling activities are completed, crews excavate and install cable vaults and duct bank.

Work Hours

Approved work hours are 7 a.m. to 6 p.m., Monday to Friday but crews are working from **7 a.m. to 3:30 p.m.** Occasional work may extend beyond the approved hours based on approval from local officials.

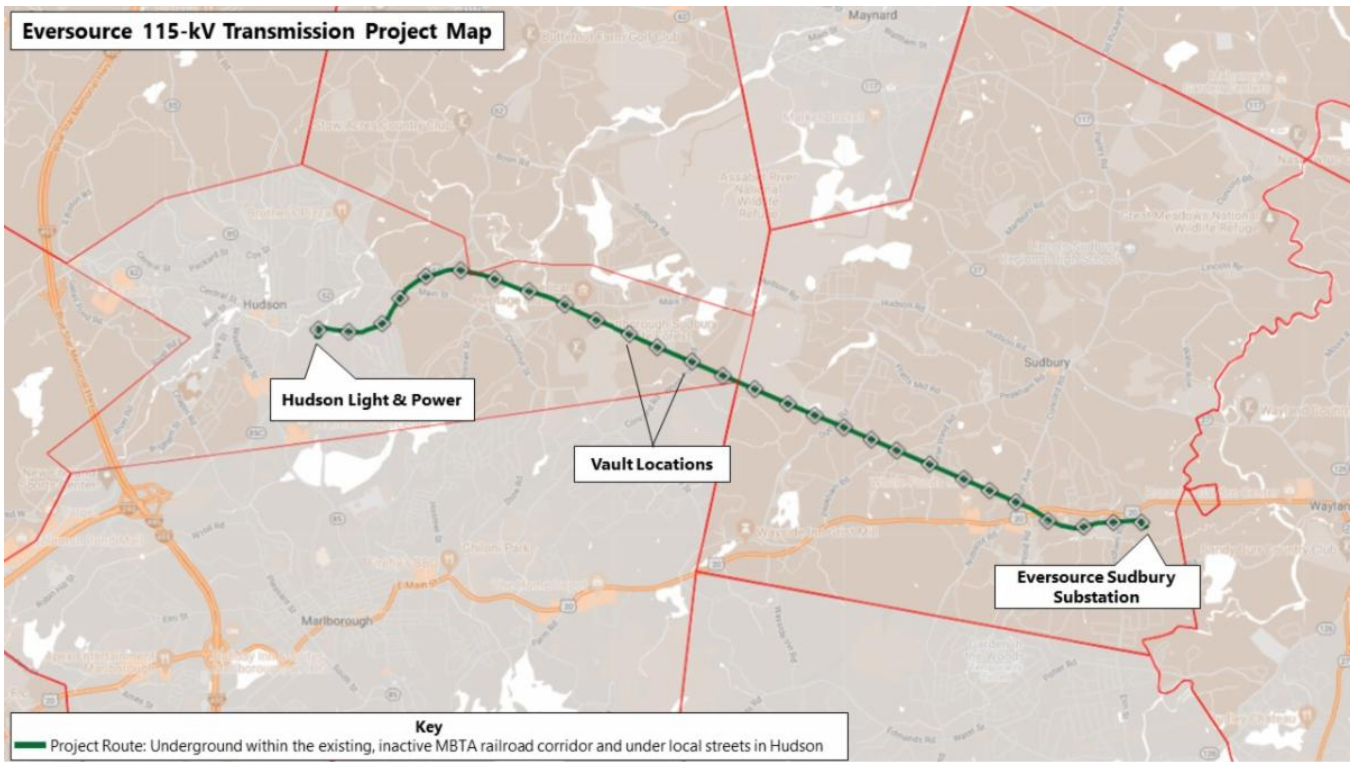
Below is an overview of the work zones in Hudson and Sudbury.

Hudson

- **In the inactive MBTA rail corridor from Wilkins Street to Bridge 130**, crews are grading the limits of work for the next several weeks.
- **Between Bridge 130 and Main Street in the corridor**, the installation of another cable vault (MH8) north of Main Street will start next week. Cable vaults, also called manholes (MH), are access points that are used for underground public utilities, allowing inspection and maintenance.
- **From Main Street to Parmenter Road in the corridor**, work crews are currently installing a cable vault (MH10) south of Main Street. The vault installation should be completed by the end of next week.
- **Between Parmenter Road and White Pond Road in the corridor**, two cable vaults (MH12 and MH13) were successfully completed in the last several weeks. Between MH12 and MH13, crews will be excavating trenches, installing a protective tube called a conduit, which will eventually house the transmission line, and backfilling the trench. Work in this area is where most of the construction is happening for the coming weeks. [View the Project map](#) for more details on the locations of work crews.

Sudbury

- **In the inactive MBTA rail corridor from the Town line to Dutton Road**, crews are installing erosion controls which will be followed by rail/tie removal in the coming weeks.
- **From Dutton Road to Peakham Road in the corridor**, vegetation removal is ongoing starting near Dutton Road and moving east, which will be followed by erosion controls and rail/tie removal. The clearing is expected to start between Peakham Road and Horse Pond Road next week.
- **Between the Sudbury Substation and Bridge 127**, rail/tie removal is progressing through the end of the week and grading of the limits of work will start in the coming weeks.
- **Off Boston Post Road at the Sudbury Substation**, excavation is happening to build foundations for new structures that will be installed on Eversource property inside the fence line.



Typical Construction

Pictured is a view of the inactive MBTA corridor near Dutton Road looking east.



Stay Informed

Eversource is committed to being a good neighbor and doing any work with respect for you and your property. If you have questions, please contact us directly or click on one of the resources below to learn more about the project.

- Dial **1-833-836-0302** or email ProjectInfoMa@eversource.com with any questions or concerns.
- Visit the [website](#) for this project.
- View the [interactive project map](#).
- View information on [rail trail access](#) during construction.
- Visit the [Town of Sudbury](#) or [Town of Hudson](#) website to see additional resources.
- **Field outreach representatives** will be in touch with notices updating you on construction activities.

Did someone forward this email? If so, [sign up to receive future updates](#).

Si necesita que le traduzcan esta notificación, envíenos un correo electrónico a ProjectInfoMa@eversource.com y escriba "[S-H]" en el asunto.

如果您需要本通知的翻譯版本，請寄送電郵至 ProjectInfoMa@eversource.com，並在主題欄中輸入 "[S-H]"

如果您需要本通知的翻譯版本，請發電子郵件到 ProjectInfoMa@eversource.com，並在主題欄中輸入 "[S-H]"

EVERSOURCE

Address: 247 Station Drive
Westwood, MA 02090
Phone: 1-800-793-2202



[Email Us](#)

Eversource | 247 Station Drive, Westwood, MA 02090

[Unsubscribe selectboard@sudbury.ma.us](mailto:Unsubscribe_selectboard@sudbury.ma.us)

[Update Profile](#) | [Constant Contact Data Notice](#)

Sent by miles.lang-kennedy@eversource.com powered by

