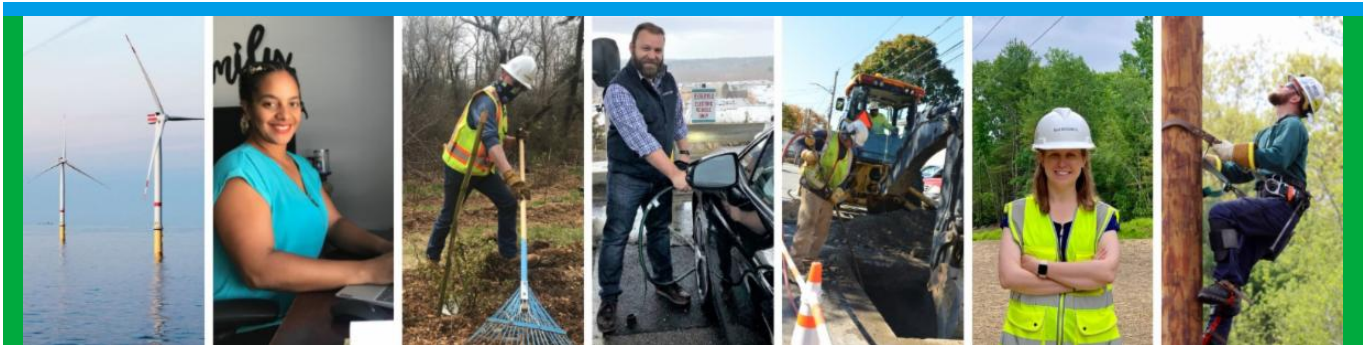


From: Eversource Outreach <miles.lang-kennedy@eversource.com>
Sent: Wednesday, March 8, 2023 11:56 AM
To: Select Board
Subject: Project Update (03/08/23) Eversource 115-kV Transmission Line



[Project Website](#)



Eversource 115-kV Transmission Project Update

Greetings!

Eversource and its contractor BOND Civil & Utility Construction and their subcontractors (ET&L Construction, M-O-N Landscaping, and Moosehead) resumed construction on the 115-kilovolt (kV) Underground Transmission Line Project. Eversource asks people to avoid walking on and crossing the inactive Massachusetts Bay Transportation Authority (MBTA) rail corridor. Construction is not expected to interrupt electric service.

In the corridor, work starts with vegetation removal in the limits of work, followed by placing erosion controls and railroad rail/tie removal. From there, grading of the limits of work happens. After these enabling activities are completed, crews excavate, install cable vaults, and duct bank and backfill trenches. A duct bank is typically installed between vaults that have been recently placed.

Work Hours

Approved work hours are 7 a.m. to 6 p.m., Monday to Friday but crews are working from **7 a.m. to 3:30 p.m.** in Hudson and Sudbury, barring inclement weather. Occasional work may extend beyond the approved hours, due to unforeseen circumstances, based on approval from local officials.

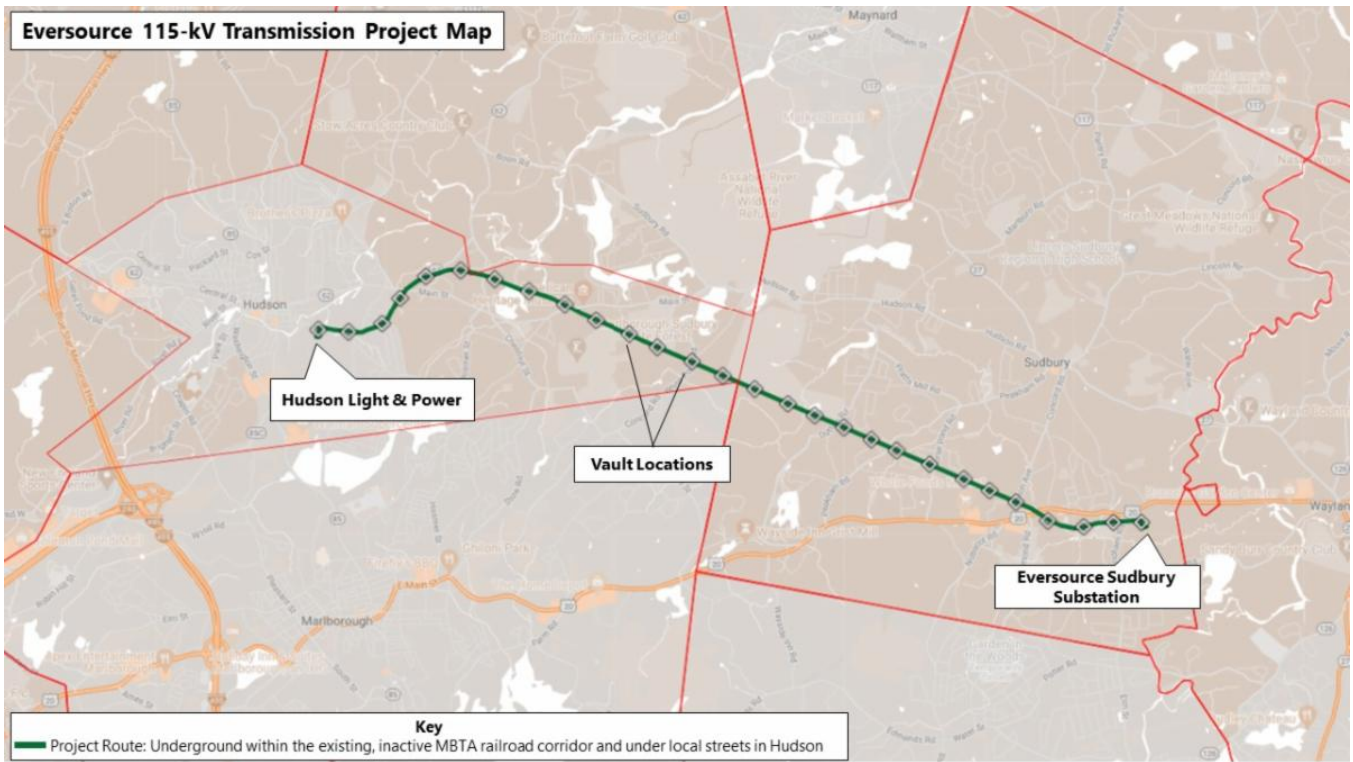
Below is an overview of the active and upcoming work zones. [View the Project map](#) for additional details on the location of work crews.

Hudson

- **In the inactive MBTA rail corridor from Bridge 130 to Parmenter Road**, crews are excavating, installing duct bank, and backfilling trenches between two recently installed cable vaults (MH8 and MH9) for the coming weeks. Cable vaults are sometimes also called manholes (MH).
- **From Parmenter Road to Main Street**, similar activities, including excavation, duct bank installation and backfilling trenches in the limits of work is happening between MH9 and MH10. Work in this area will continue throughout March. In the same area, east of Parmenter Road, the installation of MH11 will start soon.

Sudbury

- **From the Town line to Bridge 128**, grading of the limits of work will resume toward the end of this week.
- **Between Dutton Road and Peakham Road**, the installation of erosion controls will be finalized this week and the grading of the limits of work will resume soon.
- **From Peakham Road to Hose Pond Road**, crews will be grading the limits of work for the next few weeks.
- **Between Horse Pond Road and Union Avenue**, crews will be removing railroad rails and ties in the coming weeks.
- **Between Boston Post Road and Bridge 127**, the installation of erosion controls will be completed this week which will be followed by rail and tie removal.
- **Between Bridge 127 and Sudbury Substation**, crews are installing wall sheeting near the bridge, which is a series of interlocking steel panels that acts as a retaining wall. A retaining wall is a rigid wall that holds soil laterally.



Typical Construction

Pictured is a section of the corridor in Sudbury, between Boston Post Road and Bridge 127.



Stay Informed

Eversource is committed to being a good neighbor and doing any work with respect for you and your property. If you have questions, please contact us directly or click on one of the resources below to learn more about the project.

- Dial **1-833-836-0302** or email ProjectInfoMa@eversource.com with any questions or concerns.
- Visit the [website](#) for this project.
- View the [interactive project map](#).
- View information on [rail trail access](#) during construction.
- Visit the [Town of Sudbury](#) or [Town of Hudson](#) website to see additional resources.
- **Field outreach representatives** will be in touch with notices updating you on construction activities.

Did someone forward this email? If so, [sign up to receive future updates](#).

Si necesita que le traduzcan esta notificación, envíenos un correo electrónico a ProjectInfoMa@eversource.com y escribe “[S-H]” en el asunto.

如果您需要本通知的翻譯版本，請寄送電郵至 ProjectInfoMa@eversource.com，並在主題欄中輸入 “[S-H]”

如果您需要本通知的翻译版本，请发电子邮件到 ProjectInfoMa@eversource.com，并在主题栏中输入 “[S-H]”

EVERSOURCE

Address: 247 Station Drive
Westwood, MA 02090
Phone: 1-833-836-0302



[Email Us](#)

Eversource | 247 Station Drive, Westwood, MA 02090

[Unsubscribe selectboard@sudbury.ma.us](mailto:Unsubscribe_selectboard@sudbury.ma.us)

[Update Profile](#) | [Constant Contact Data Notice](#)

Sent by miles.lang-kennedy@eversource.com powered by

