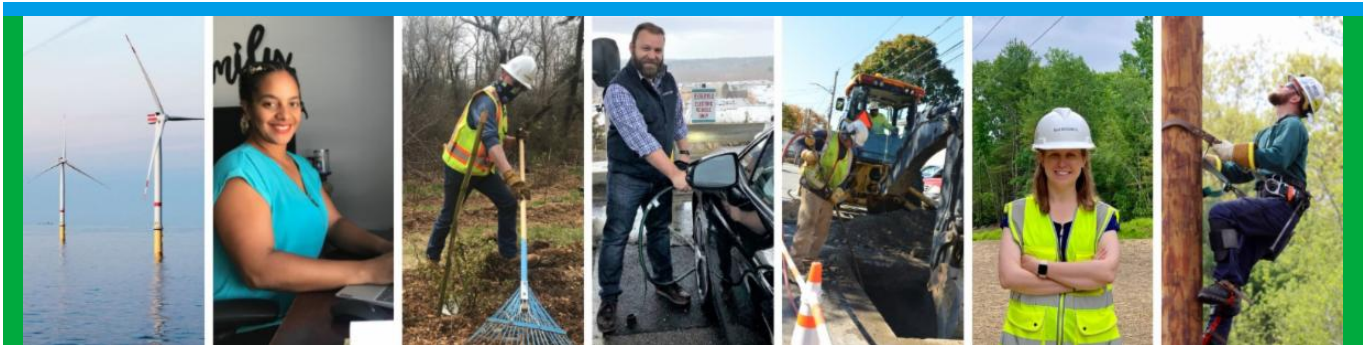


From: Eversource Outreach <miles.lang-kennedy@eversource.com>
Sent: Wednesday, March 15, 2023 9:13 AM
To: Select Board
Subject: Project Update (03/15/23) Eversource 115-kV Transmission Line



[Project Website](#)



Eversource 115-kV Transmission Project Update

Greetings!

Eversource and its contractor BOND Civil & Utility Construction and their subcontractors (ET&L Construction, M-O-N Landscaping, and Moosehead) resumed construction on the 115-kilovolt (kV) Underground Transmission Line Project. Eversource asks people to avoid walking on and crossing the inactive Massachusetts Bay Transportation Authority (MBTA) rail corridor. Construction is not expected to interrupt electric service.

In the corridor, work starts with vegetation removal in the limits of work, followed by placing erosion controls and railroad rail/tie removal. From there, grading of the limits of work happens. After these enabling activities are completed, crews excavate, install cable vaults and duct bank and backfill trenches. Duct bank is typically installed between vaults that have been recently placed.

Work Hours

Approved work hours are 7 a.m. to 6 p.m., Monday to Friday but crews are working from **7 a.m. to 3:30 p.m. in Hudson and Sudbury**, barring inclement weather. Occasional work may extend beyond the approved hours, due to unforeseen circumstances, based on approval from municipal staff.

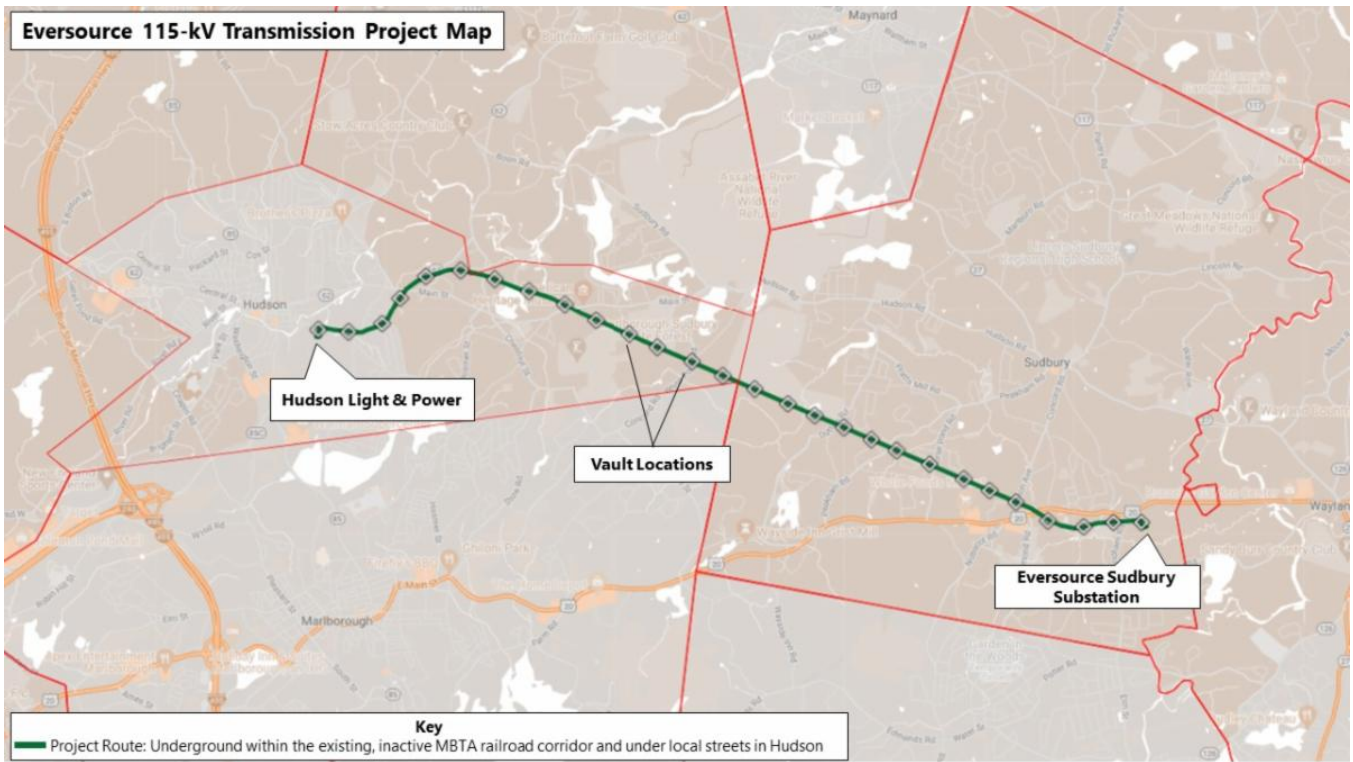
Below is an overview of the active and upcoming work zones. [View the Project map](#) for additional details on the location of work crews.

Hudson

- **In the inactive MBTA rail corridor from Bridge 130 to Main Street**, crews are excavating, installing duct bank, and backfilling trenches between multiple cable vaults (MH7 and MH8, MH8 and MH9) for the coming weeks. Cable vaults are sometimes also called manholes (MH).
- **From Main Street to Parmenter Road**, similar activities, including excavation, duct bank installation and backfilling trenches in the limits of work is happening between MH9 and MH10.
- **Starting in early April on Forest Avenue, between Wheeler Road and Wilkins Street**, construction crews will begin installing cable vaults and duct bank in the roadway. Eversource Field Outreach representatives will be in touch with more specific details on planned initial work zones.

Sudbury

- **From the Town line to Bridge 128**, grading of the limits of work will continue toward the end of next week.
- **Between Dutton Road and Peakham Road**, grading of the limits of work will be on-going next week.
- **From Peakham Road to Hose Pond Road**, Eversource approved contractors will be finishing grading the limits of work over the next week.
- **Between Union Ave and Boston Post Road**, removal of rails and ties is on-going and will be followed by grading within the limits of work.
- **Between Boston Post Road and Bridge 127**, crews will be working to install erosion controls and removing rails and ties. This activity will last through the end of next week.
- **Between Bridge 127 and the Sudbury Substation**, crews are installing wall sheeting near the bridge, which is an interlocking steel panel that acts as a retaining wall. A retaining wall is a rigid wall that holds soil laterally.



Typical Construction

Pictured is a crew in Hudson backfilling a trench that was recently installed.



Stay Informed

Eversource is committed to being a good neighbor and doing any work with respect for you and your property. If you have questions, please contact us directly or click on one of the resources below to learn more about the project.

- Dial **1-833-836-0302** or email ProjectInfoMa@eversource.com with any questions or concerns.
- Visit the [website](#) for this project.
- View the [interactive project map](#).
- View information on [rail trail access](#) during construction.
- Visit the [Town of Sudbury](#) or [Town of Hudson](#) website to see additional resources.
- **Field outreach representatives** will be in touch with notices updating you on construction activities.

Did someone forward this email? If so, [sign up to receive future updates](#).

Si necesita que le traduzcan esta notificación, envíenos un correo electrónico a ProjectInfoMa@eversource.com y escribe “[S-H]” en el asunto.

如果您需要本通知的翻譯版本，請寄送電郵至 ProjectInfoMa@eversource.com，並在主題欄中輸入 “[S-H]”

如果您需要本通知的翻译版本，请发电子邮件到 ProjectInfoMa@eversource.com，并在主题栏中输入 “[S-H]”

EVERSOURCE

Address: 247 Station Drive
Westwood, MA 02090
Phone: 1-833-836-0302



[Email Us](#)

Eversource | 247 Station Drive, Westwood, MA 02090

[Unsubscribe selectboard@sudbury.ma.us](mailto:Unsubscribe_selectboard@sudbury.ma.us)

[Update Profile](#) | [Constant Contact Data Notice](#)

Sent by miles.lang-kennedy@eversource.com powered by



Try email marketing for free today!