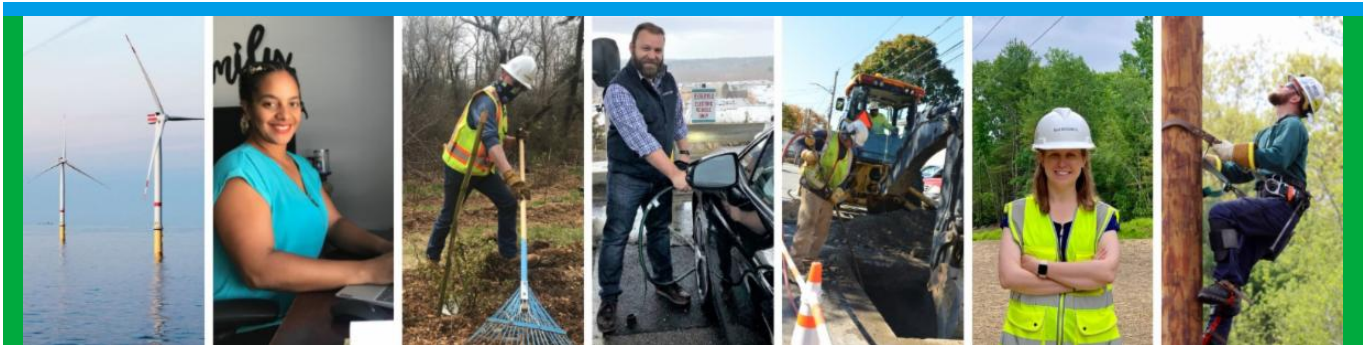


**From:** Eversource Outreach <miles.lang-kennedy@eversource.com>  
**Sent:** Wednesday, March 22, 2023 11:17 AM  
**To:** Select Board  
**Subject:** Project Update (03/22/23) Eversource 115-kV Transmission Line



[Project Website](#)



## Eversource 115-kV Transmission Project Update

Greetings!

Members of the community can expect to see continued construction and other enabling activities in Hudson and Sudbury related to the Eversource 115-kilovolt (kV) Underground Transmission Line Project. Eversource asks people to avoid walking on the inactive Massachusetts Bay Transportation Authority (MBTA) rail corridor.

### Work Hours

Approved work hours are 7 a.m. to 6 p.m., Monday to Friday but crews from BOND Civil & Utility Construction and their subcontractors (ET&L Construction, M-O-N Landscaping, and Moosehead) are working from **7 a.m. to 3:30 p.m.** Occasional work may extend beyond the approved hours, due to unforeseen circumstances, based on approval from municipal staff.

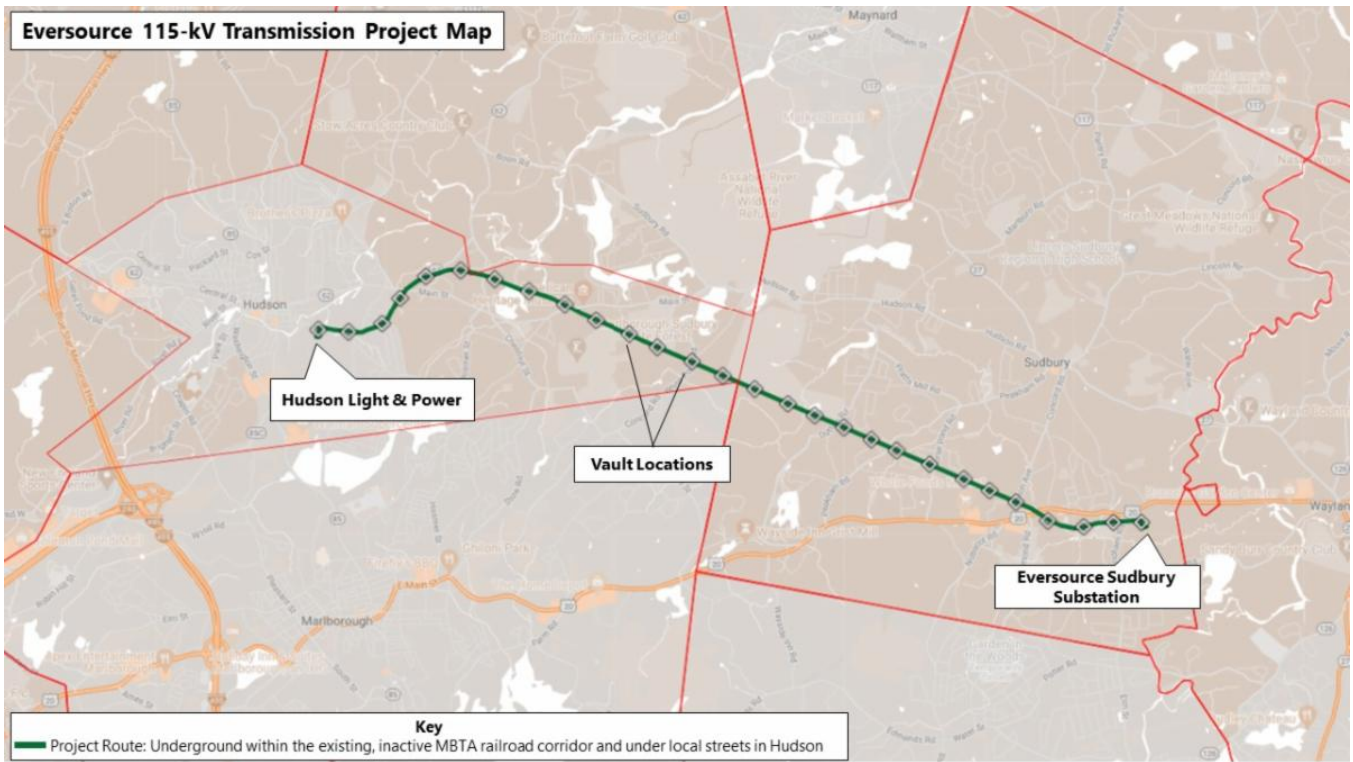
Below is an overview of the active work zones. [View the Project map](#) for additional details on the location of work crews.

### Hudson

- **In the inactive MBTA rail corridor, from Wilkins Street to Chestnut Street,** crews will start to install another cable vault (MH6). Work in this area is expected to last through the end of next week. Cable vaults, also called manholes (MH), are openings in an underground duct system that houses electrical equipment. The opening is large enough for a person to enter on a ladder.
- **Starting next week, between Chestnut Street and Bridge 130 in the corridor,** crews will begin excavating, installing duct bank, and backfilling trenches between two cable vaults (MH7 and MH8).
- **From Bridge 130 to Main Street in the corridor,** crews are in the process of excavating, installing duct bank and backfilling the trench between MH8 and MH9. Work in this area is expected to be completed by the end of next week.
- **Starting in April on Forest Avenue in the Hudson streets,** crews will begin installing cable vaults (manholes) in the road. There are three vaults in the road that BOND is planning to install in April. Crews will start by placing the vault located south of Glendale Road (MH4), moving to the vault west of Marlboro Street (MH2), and then will install the vault between Richardson Street and Old North Road (MH3). Vault installation in the roadway typically lasts 1-2 weeks based on underground conditions.

## Sudbury

- **From the Town line to Bridge 128 in the corridor,** grading of the limits of work will continue for the next several weeks.
- **Between Dutton Road and Hose Pond Road,** grading of the limits of work will be completed this week.
- **Between Horse Pond Road and Union Avenue,** crews are installing sediment and erosion controls in the corridor.
- **Between Union Ave and Boston Post Road,** removal of rails and ties is nearly finished which will be followed by grading of the limits of work next week.
- **Between Boston Post Road and Bridge 127,** crews are removing rails and ties. This activity will be followed by grading of the limits of work.
- **Between Bridge 127 and the Sudbury Substation,** crews are installing wall sheeting near the bridge, which is an interlocking steel panel that acts as a retaining wall. Grading of the limits of work will resume next week in this segment.



## Typical Construction

Pictured is a segment in Hudson, between bridge 130 and Main Street, that was recently backfilled.



## Stay Informed

Eversource is committed to being a good neighbor and doing any work with respect for you and your property. If you have questions, please contact us directly or click on one of the resources below to learn more about the project.

- Dial **1-833-836-0302** or email [ProjectInfoMa@eversource.com](mailto:ProjectInfoMa@eversource.com) with any questions or concerns.
- Visit the [website](#) for this project.
- View the [interactive project map](#).
- View information on [rail trail access](#) during construction.
- Visit the [Town of Sudbury](#) or [Town of Hudson](#) website to see additional resources.
- **Field outreach representatives** will be in touch with notices updating you on construction activities.

Did someone forward this email? If so, [sign up to receive future updates](#).

Si necesita que le traduzcan esta notificación, envíenos un correo electrónico a [ProjectInfoMa@eversource.com](mailto:ProjectInfoMa@eversource.com) y escribe “[S-H]” en el asunto.

如果您需要本通知的翻譯版本，請寄送電郵至 [ProjectInfoMa@eversource.com](mailto:ProjectInfoMa@eversource.com)，並在主題欄中輸入 “[S-H]”

如果您需要本通知的翻译版本，请发电子邮件到 [ProjectInfoMa@eversource.com](mailto:ProjectInfoMa@eversource.com)，并在主题栏中输入 “[S-H]”

# EVERSOURCE

**Address:** 247 Station Drive  
Westwood, MA 02090  
**Phone:** 1-833-836-0302



Email Us

Eversource | 247 Station Drive, Westwood, MA 02090

[Unsubscribe selectboard@sudbury.ma.us](mailto:Unsubscribe_selectboard@sudbury.ma.us)

[Update Profile](#) | [Constant Contact Data Notice](#)

Sent by [miles.lang-kennedy@eversource.com](mailto:miles.lang-kennedy@eversource.com) powered by

