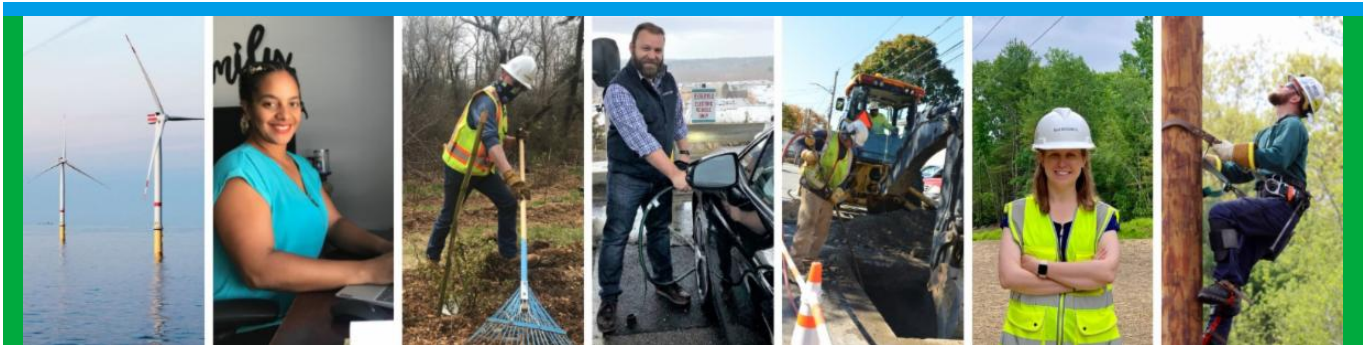


From: Eversource Outreach <miles.lang-kennedy@eversource.com>
Sent: Wednesday, April 5, 2023 8:43 AM
To: Select Board
Subject: Project Update (04/05/23) - Eversource 115-kV Transmission Line



[Project Website](#)



Eversource 115-kV Transmission Project Update

Greetings!

Members of the community will see continued construction and other enabling activities related to the Eversource 115-kilovolt (kV) Underground Transmission Line Project. Eversource asks people to avoid walking on the inactive Massachusetts Bay Transportation Authority (MBTA) rail corridor.

Most of the enabling activities including vegetation removal in the limits of work, placing erosion controls, railroad rail/tie removal and grading has been completed. Crews will proceed by placing cable vaults (also called manholes or MH for short) and installing duct bank. In both cases the operation begins with excavation, installing the cable vault or duct bank, and backfilling the trench. Crews often work between recently placed cables vaults to install duct bank, for example, between MH7 and MH8.

Work Hours

Approved work hours are 7 a.m. to 6 p.m., Monday to Friday but crews from BOND Civil & Utility Construction and their subcontractors (ET&L Construction, M-O-N Landscaping, and Moosehead) are working from **7 a.m. to 3:30 p.m.** Occasional

work may extend beyond the approved hours, due to unforeseen circumstances, based on approval from municipal staff.

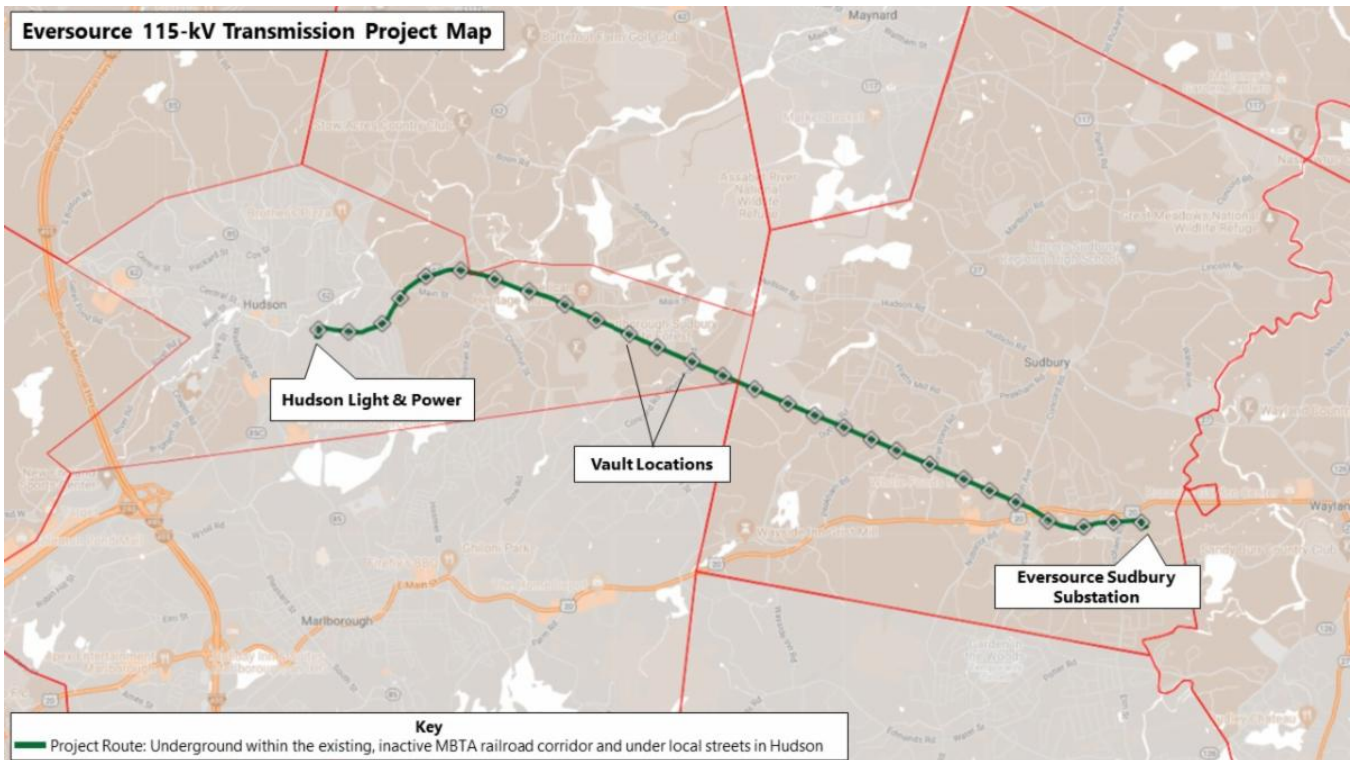
Below is an overview of the active work zones. [View the Project map](#) for additional details on the location of work crews.

Hudson

- **On Forest Avenue near Glendale Road**, crews are starting to install a cable vault (MH4) in the road. Cable vaults, also called manholes (MH), are openings in an underground duct system that houses electrical equipment. Work includes excavating an opening in the roadway, installing the vault with a crane, and backfilling the trench. Crews should be completed with the installation of the vault by the end of this week or early next week. After this vault is installed, crews will move to place MH2 next and MH3 starting on April 18.
- **In the inactive MBTA corridor, between Chestnut Street and Bridge 130**, crews are in the process of excavating, installing duct bank and backfilling trenches between MH7 and MH8 (east of Chestnut Street). Work in this area will last for several weeks.
- **Between Main Street and Parmenter Road**, crews are performing similar activities between MH10 (south of Main Street) and MH11 (east of Parmenter Road). Work in this area which includes excavation, duct bank installation and backfilling, will last throughout April.

Sudbury

- **From the Town line to Bridge 128 in the MBTA corridor**, crews are completing the removal of railroad rails and ties in this segment.
- **Between Union Ave and Boston Post Road**, crews completed the grading of the limits of work and will begin excavating, installing duct bank, and backfilling trenches between MH24 (near Station Road) and MH25 (north of Maple Avenue).
- **Between Boston Post Road and Sudbury Substation**, crews are grading the limits of work and should be completed by the end of next week.



Traffic Management



Due to the Forest Avenue closure needed for this work, cars coming to Forest Avenue from the west will be detoured down Main Street to Villa de Porto Blvd, then left onto Grove Street, to get back to Forest Avenue. Cars traveling east on Forest Avenue will be directed to take Woodrow Street to get to Main Street. [Click here](#) for more information on the detour.

Typical Construction

Pictured is a section of the corridor in Hudson near Main Street where duct bank is being installed.



Stay Informed

Eversource is committed to being a good neighbor and doing any work with respect for you and your property. If you have questions, please contact us directly or click on one of the resources below to learn more about the project.

- Dial **1-833-836-0302** or email ProjectInfoMa@eversource.com with any questions or concerns.
- Visit the [website](#) for this project.
- View the [interactive project map](#).
- View information on [rail trail access](#) during construction.
- Visit the [Town of Sudbury](#) or [Town of Hudson](#) website to see additional resources.
- **Field outreach representatives** will be in touch with notices updating you on construction activities.

Did someone forward this email? If so, [sign up to receive future updates](#).

Si necesita que le traduzcan esta notificación, envíenos un correo electrónico a ProjectInfoMa@eversource.com y escribe “[S-H]” en el asunto.

如果您需要本通知的翻譯版本，請寄送電郵至 ProjectInfoMa@eversource.com，並在主題欄中輸入 “[S-H]”

如果您需要本通知的翻译版本，请发电子邮件到 ProjectInfoMa@eversource.com，并在主题栏中输入 “[S-H]”



Address: 247 Station Drive
Westwood, MA 02090
Phone: 1-833-836-0302



[Email Us](#)

Eversource | 247 Station Drive, Westwood, MA 02090

[Unsubscribe selectboard@sudbury.ma.us](mailto:selectboard@sudbury.ma.us)

[Update Profile](#) | [Constant Contact Data Notice](#)

Sent by miles.lang-kennedy@eversource.com powered by

