

From: Eversource Outreach <miles.lang-kennedy@eversource.com>
Sent: Monday, April 10, 2023 2:20 PM
To: Select Board
Subject: Project Update (04/10/23) - Eversource 115-kV Transmission Line



[Project Website](#)



Eversource 115-kV Transmission Project Update

Greetings!

Members of the community can expect to see continued construction activities at several sites related to the Eversource 115-kilovolt (kV) Underground Transmission Line Project in Sudbury and Hudson. Eversource asks people to avoid walking on the inactive Massachusetts Bay Transportation Authority (MBTA) rail corridor.

Crews are mainly focused on placing cable vaults (also called manholes or MH for short) and installing duct bank along the project route. In both cases the operation begins with excavation, installing the cable vault or duct bank, and backfilling trenches. Crews often work between recently placed cables vaults to install duct bank, for example, between MH7 and MH8.

Work Hours

Approved work hours are 7 a.m. to 6 p.m., Monday to Friday but crews from BOND Civil & Utility Construction and their subcontractors (ET&L Construction, M-O-N Landscaping, and Moosehead) are working from **7 a.m. to 3:30 p.m.** Occasional work may extend beyond the approved hours, due to unforeseen circumstances, based on approval from municipal staff.

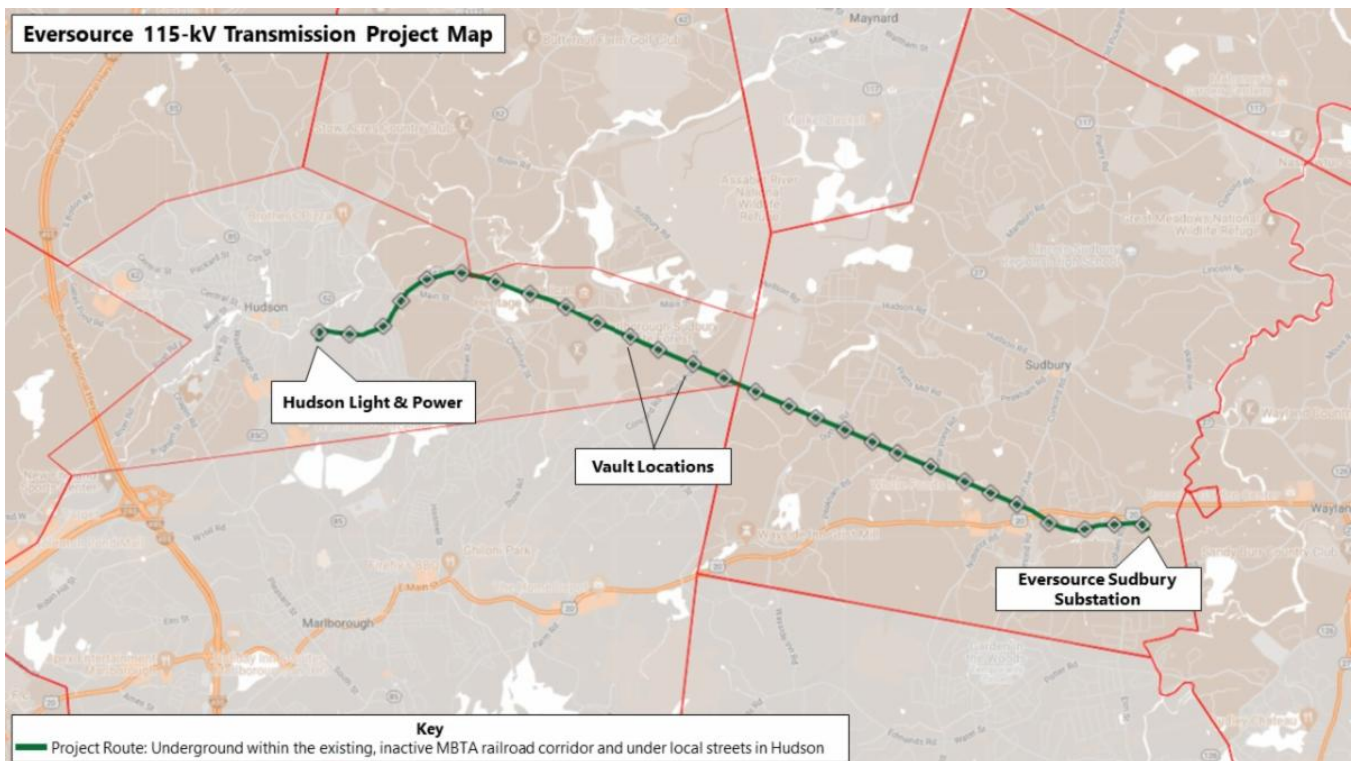
Below is an overview of the active work zones. [View the Project map](#) for additional details on the location of work crews.

Hudson

- **On Forest Avenue near Glendale Road**, crews recently completed the installation of a cable vault (MH4) in the road. Last week, during excavation, a water line was impacted which led to temporary water shutoffs in the area. Water service was restored on April 6.
- **On Parmenter Road, near the Charter Oak Country Club**, crews are installing a small section of duct bank in the roadway (roughly 30 feet), to connect two sections of duct bank recently installed in the MBTA corridor. Work in this area should be completed by the end of the week.
- **On Forest Avenue, between Richardson Street and Old North Road**, crews will begin installing another cable vault (MH3) in the road next week. Work includes excavating an opening in the roadway, installing the vault with a crane, and backfilling the trench. This work is scheduled to start next week and will require a detour around the work zone. See the Traffic Management Section below for more information.

Sudbury

- **From the Town line to Bridge 128 in the MBTA corridor**, crews are completing the removal of railroad rails and ties in this segment.
- **Between Boston Post Road and Sudbury Substation**, crews are grading the limits of work and should be completed by the end of next week.



Traffic Management



Due to the Forest Avenue closure needed for this work (installing MH3), cars coming to Forest Avenue from the north will detour down Richardson Street to Causeway Street, then left onto Old North Road, to get back to Forest Avenue. Cars traveling south on Forest Avenue will be directed to take Old North Road to get to Causeway Street, and then will detour right on Richardson Street to get back to Forest Avenue.

Typical Construction

Pictured is a work crew in Hudson on Forest Avenue last week installing a cable vault (MH4) in the road.



Stay Informed

Eversource is committed to being a good neighbor and doing any work with respect for you and your property. If you have questions, please contact us directly or click on one of the resources below to learn more about the project.

- Dial **1-833-836-0302** or email ProjectInfoMa@eversource.com with any questions or concerns.
- Visit the [website](#) for this project.
- View the [interactive project map](#).
- View information on [rail trail access](#) during construction.
- Visit the [Town of Sudbury](#) or [Town of Hudson](#) website to see additional resources.
- **Field outreach representatives** will be in touch with notices updating you on construction activities.

Did someone forward this email? If so, [sign up to receive future updates](#).

Si necesita que le traduzcan esta notificación, envíenos un correo electrónico a ProjectInfoMa@eversource.com y escriba “[S-H]” en el asunto.

如果您需要本通知的翻譯版本，請寄送電郵至 ProjectInfoMa@eversource.com，並在主題欄中輸入 “[S-H]”

如果您需要本通知的翻译版本，请发电子邮件到 ProjectInfoMa@eversource.com，并在主题栏中输入 “[S-H]”

EVERSOURCE

Address: 247 Station Drive
Westwood, MA 02090
Phone: 1-833-836-0302



[Email Us](#)

Eversource | 247 Station Drive, Westwood, MA 02090

Unsubscribe_selectboard@sudbury.ma.us

[Update Profile](#) | [Constant Contact Data Notice](#)

Sent by miles.lang-kennedy@eversource.com powered by



