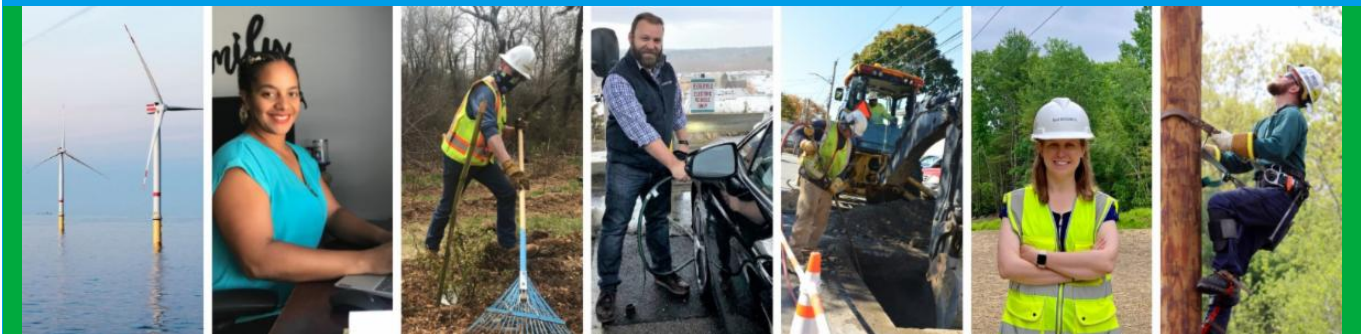


From: Project Outreach <brianna.germain@eversource.com>
Sent: Friday, June 9, 2023 9:01 AM
To: Select Board
Subject: Project Update (6/9/23) - Eversource 115-kV Transmission Line



[Visit the Project Website](#)



Eversource 115-kV Project Update

Greetings!

Members of the community can expect to see construction at several sites related to the Eversource 115-kilovolt (kV) Underground Transmission Line Project. Eversource asks people to avoid walking on the inactive Massachusetts Bay Transportation Authority (MBTA) rail corridor.

Crews are focused on placing cable vaults (also called manholes or MH for short) and installing duct bank. In both cases the operation begins with excavation, installing the cable vault or duct bank, and backfilling trenches. Crews typically work between recently placed cables vaults to install duct bank, for example, between MH12 and MH13 in Hudson.

Work Hours

Approved work hours are 7 a.m. to 6 p.m., Monday to Friday but crews are working from **7 a.m. to 3:30 p.m.** Occasional work may extend beyond the approved hours, due to unforeseen circumstances, based on approval from local officials.

Below is an overview of the active work zones. [View the project map](#) for additional details on the location of work crews.

Hudson

- **On Forest Avenue, west of Marlboro Street**, crews are excavating and installing duct bank in the road between a recently installed cable vault (MH2) and Marlboro Street.
- **On Forest Avenue and Wilkins Street**, crews are working to finish excavating and installing duct bank in the road between MH4 and Main Street, near Glendale Road. The crew will then go to the other side of the Main Street crossing, to begin excavating and installing duct bank between Main Street and MH5 along Wilkins Street.
- **In the corridor between Wilkins Street and Bridge 130**, crews are excavating and installing duct bank between MH6 and MH7. Once this work is complete, similar work will begin from MH6 to MH5 (north of Orchard Drive)
- **In the corridor from Parmenter Road to White Pond Road**, crews are working to complete the final grading. This activity will continue next week.
- **Starting as early as June 22**, crews will be working to complete a section of duct bank between two manholes, that have been installed on either side of the Chestnut Street bridge/MBTA corridor crossing. Chestnut Street will be excavated on either side of the bridge with a portion of the road being removed entirely. ***For this work, this portion of Chestnut Street will be closed for an extended period, lasting up to four months.*** Chestnut Street will be closed to through traffic and only be open to local access up to the MBTA crossing at Chestnut Street/Marlboro Road.

Sudbury

- **In the corridor from Dutton Road to Peakham Road**, crews will be grading the limits of work in several areas.
- **Between Horse Pond Road and Union Avenue**, crews excavating and installing duct bank between two recently installed cable vaults (MH22-MH23) south of Bridle Path.
- **Between Bridge 127 and the Sudbury Substation**, another cable vault (MH26) was installed this week and MH27 (east of Landham Road) will be placed starting next week.
- **At the Sudbury Substation**, upgrades are continuing at the Sudbury Substation inside the fence and on Eversource property.

**Due to the complexities of underground construction, the two-week schedule described above is subject to change.*

Typical Construction

Pictured is a crew in Hudson backfilling a trench in the roadway on Forest Ave by Glendale Road.



Stay Informed

Eversource is committed to being a good neighbor and doing any work with respect for you and your property. If you have questions, please contact us directly or click on one of the resources below.

- Dial **1-833-836-0302**
 - Email **ProjectInfoMa@eversource.com**
 - Visit the [website](#) for this project
 - View the [interactive project map](#)
 - View information on [rail trail access during construction](#)
 - Visit the [Town of Sudbury](#) or [Town of Hudson](#) website for more details about the Project.
 - **Field outreach representatives** will be in touch with notices updating you on construction activities.
 - Did someone forward this email? If so, [sign up to receive future updates](#)
-

Si necesita que le traduzcan esta notificación, envíenos un correo electrónico a Projectinfoma@eversource.com y escribe "S-H" en el asunto.

如果您需要本通知的翻譯版本，請寄送電郵至 Projectinfoma@eversource.com，並在主題欄中輸入 "S-H"

如果您需要本通知的翻译版本，请发电子邮件到 Projectinfoma@eversource.com，并在主题栏中输入 "S-H"

EVERSOURCE

Address: 247 Station Drive
Westwood, MA 02090
Phone: 1-833-836-0302



[Email Us](#)

Eversource | 247 Station Drive, Westwood, MA 02090

[Unsubscribe selectboard@sudbury.ma.us](mailto:Unsubscribe_selectboard@sudbury.ma.us)

[Update Profile](#) | [Constant Contact Data Notice](#)

Sent by brianna.germain@eversource.com powered by

