

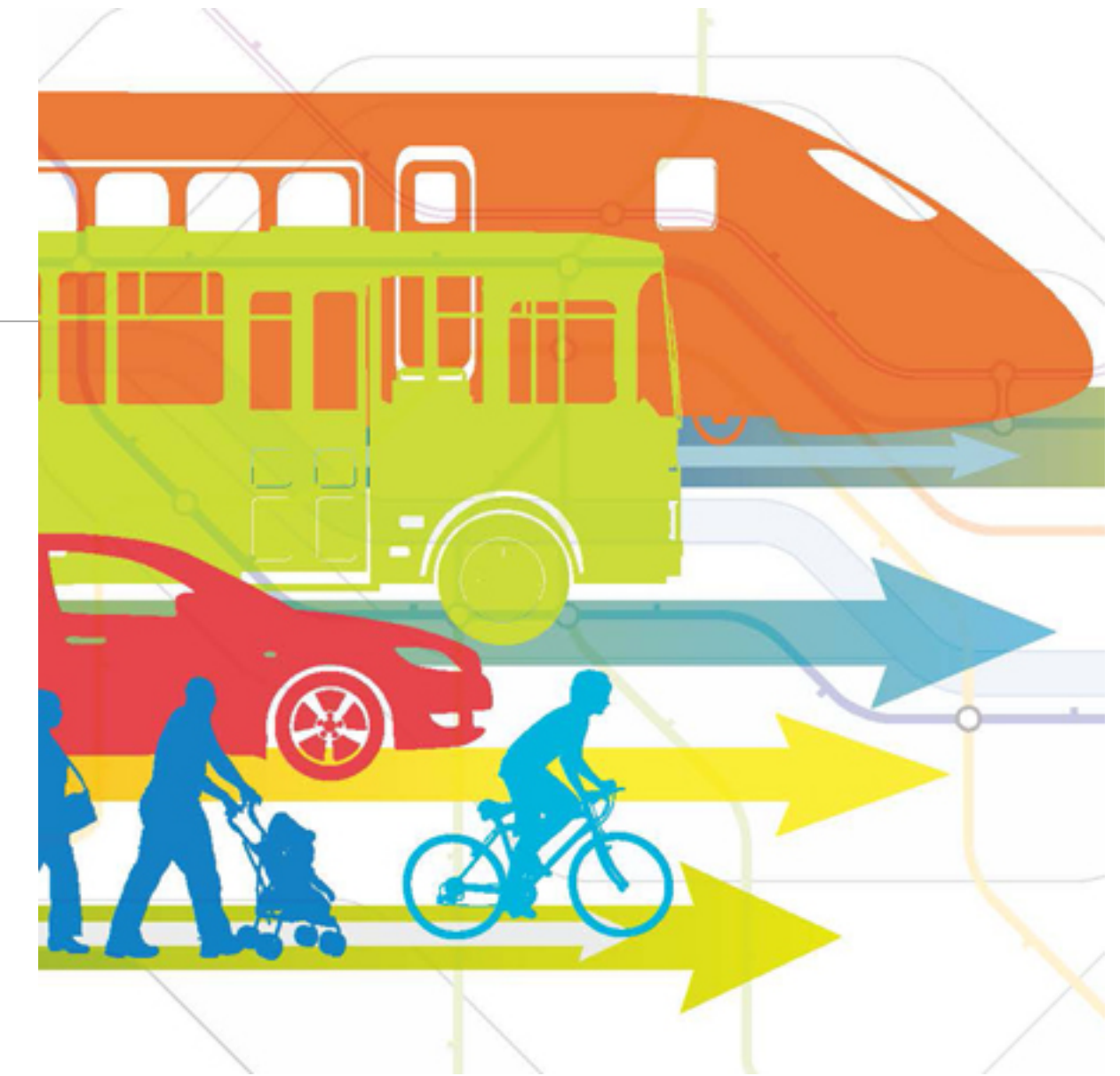
---

# GoSudbury Transportation Program

**Update to the Select Board, 3.16.21**

# Desired Goal: Sustainability

- 2019 Livable Sudbury needs assessment: *Transportation is the town's biggest challenge.*
- Transportation Committee is an outgrowth of Council on Aging/Sudbury Senior Center ongoing efforts to address that challenge.
- Sudbury now at crucial stage: *how ensure a sustainable, effective, and efficient system of transportation for all residents?*



# Current Transportation Initiatives: *Go! Sudbury*

---

Community Compact Cabinet. 2019: *Making the Connections* (\$80,000)

- Multi-town effort using TNCs to supplement CoA and RTA services (**on hold**)

MAPC COVID-19 Emergency Taxi Grant 1, 2020 (\$23,000)

- Sudbury contracted with Tommy's Taxi and JFK Transportation (concluded 2.28.21)

MAPC COVID-19 Emergency Taxi Grant 2, 2021 (\$100,000)

- Sudbury, Concord, Maynard, Stow contracting with Tommy's Taxi and JFK Transportation (through December 2021)

Go! Sudbury Uber pilot, 2021

- Preparing a Sudbury pilot with Uber (to be part of *Making the Connections*, above)

# Current Target Audiences, Destinations





---

- Residents 50 years or older
- Residents with a disability affecting driving
- Veterans
- **Financially vulnerable residents**
- Healthcare (medical, dental, therapy, etc.)
- **Prescriptions and related healthcare supplies**
- Grocery and essential shopping
- **Work for essential workers**

# Actual Expenditures, MAPC Grant 1

**\$38,000**

---

-  \$20,000 MAPC funds, PLUS
-  \$10,000 Coolidge mitigation funds
-  \$3,000 BayPath Area Agency on Aging grant
-  \$5,000 Meadow Walk mitigation funds (drawn from \$20,000 already assigned to a 2019 Community Compact Grant)

# Accomplishments

---

- **People we helped:**

82 registered

Most (89%) >50 years

43% also have permanent or temporary mobility problem

44% also qualify with financial need

**Major destinations (60% of total rides):** Framingham, Natick, Concord, Marlboro, Newton

- **Rides provided:**

Total: 412 round trips (43 in wheelchair accessible van)

280 healthcare appointments and related Rx/medical supply shopping (68%)

89 grocery shopping (22%)

43 work (10%)

# Some Lessons Learned

---

- **Sudbury needs transportation options in addition to CoA vans and MWRTA services, and for all residents.**
- **Transportation services must be sustainable, without reliance on soft money.**
- **Managing transportation requires dedicated staff to provide the level and quality of management needed for stable, effective, and efficient output.**